



Cornwall Crescent  
Notting Hill, W11

CHESTERTONS





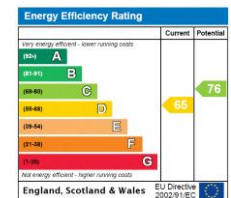
A stunning two-bedroom duplex apartment, beautifully finished in a contemporary style. This spacious 900 sq. ft. home occupies the second and third floors of a charming Victorian terraced house on Cornwall Gardens.

Refurbished in a sleek Scandinavian style, the apartment features a bright and airy open-plan kitchen and reception room, complete with wooden flooring and ample built-in storage throughout. The property includes a rear southerly facing balcony, a spacious master bedroom with an en-suite, and a well-sized second bedroom with an additional modern shower room.

Ideally located on a peaceful residential street, just 0.2 miles from Ladbroke Grove station (Circle and Hammersmith & City lines) and within 500 meters of Kensington Park Road and Portobello Road, offering an array of restaurants, cafes, and boutique shops.

- Two double bedrooms
- Period building
- Balcony
- Great Notting Hill location
- 0.2 miles from Ladbroke Grove Tube

Asking Price £1,000,000



**Tenure:** Leasehold. 111 years remaining with a Share of Freehold.  
**Service Charge:** £600 pa  
**Ground Rent:** £0  
**Local Authority:** RBK&C  
**Council Tax Band:** E

*Chestertons Notting Hill Sales*

30 Ledbury Road  
 Notting Hill  
 London  
 W11 2AB

[nottinghill@chestertons.co.uk](mailto:nottinghill@chestertons.co.uk)

0203 040 8585

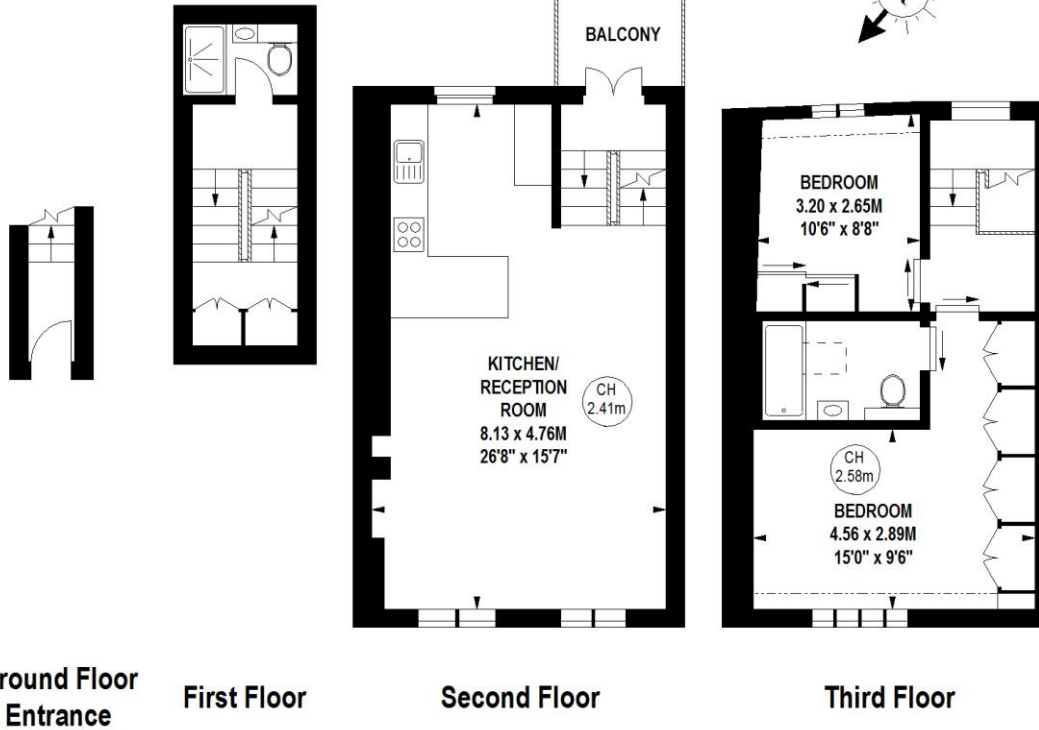
[chestertons.co.uk](http://chestertons.co.uk)

# Cornwall Crescent, W11

Approximate gross internal area

83.52 sq m / 899 sq ft

Key :  
CH - Ceiling Height



Ground Floor  
Entrance

First Floor

Second Floor

Third Floor

The floor plan is not to scale and measurements and areas shown are approximate and therefore should be used for illustrative purposes only. The plan has been prepared in accordance with the RICS code of Measuring Practice and whilst we have confidence in the information produced, it must not be relied on. If there is any aspect of particular importance, you should carry out or commission your own inspection of the property.  
Copyright of FeaturePRO.

