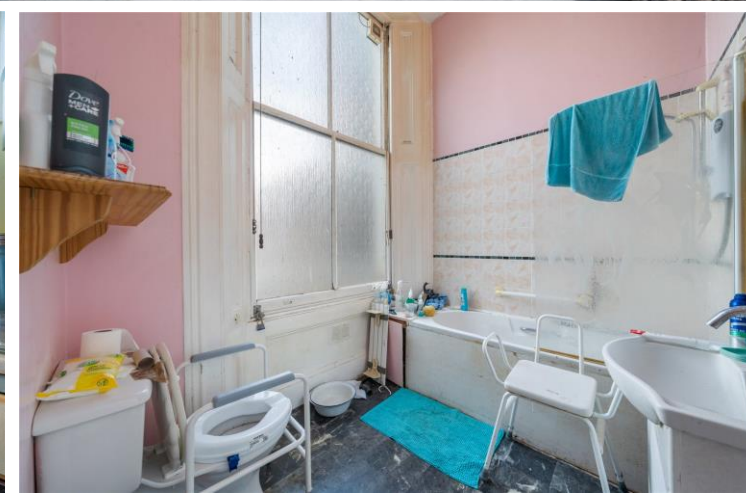




St. Stephens Gardens
Notting Hill, W2

CHESTERTONS





Nestled in a picturesque garden square, this enchanting and rare to the market first and second-floor apartment boasts a generously sized terrace, perfect for enjoying the outdoors. The south-facing reception area and terrace are flooded with excellent natural light, accentuating the property's striking 3.8 meter-high ceilings and period features.

Benefit from a refurbishment opportunity to tailor the space to your specific tastes, creating a tranquil living area bathed in sunlight – ideal for relaxation or hosting gatherings. The spacious terrace offers stunning views and is an idyllic spot for al fresco dining or morning coffees.

Step outside to the communal garden, providing a peaceful retreat from city life where you can unwind and relax. Once renovated this property will seamlessly blend historic charm with modern comforts, offering a unique opportunity to reside in a sought-after location.

Don't miss out on the chance to make this captivating property your own and experience the best of both worlds – historic elegance and contemporary living.

- Nestled in a picturesque garden square.
- Four Bedroom, 1st and 2nd floor Maisonette.
- South facing, reception area and generously sized terrace.
- Excellent natural light.
- Striking 3.8 meter-high ceilings and period features.

Asking Price £1,750,000

Energy Efficiency Rating		Current	Potential
Very energy efficient - lower running costs			
92-100	A		
81-91	B		
69-80	C		
55-68	D		
44-54	E		
35-43	F		
2-34	G		
Not energy efficient - higher running costs			
England, Scotland & Wales			
EU Directive 2002/91/EC			

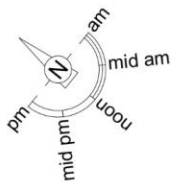
Tenure: Leasehold. 97 years remaining.
Service Charge: £2,000 p.a.
Ground Rent: £10
Local Authority: Westminster
Council Tax Band: E

Chestertons Notting Hill Sales

30 Ledbury Road
 Notting Hill
 London
 W11 2AB

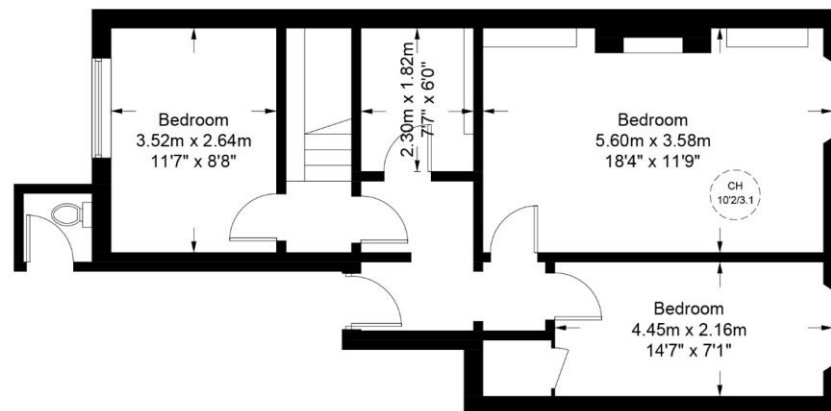
nottinghill@chestertons.co.uk

0203 040 8585
chestertons.co.uk

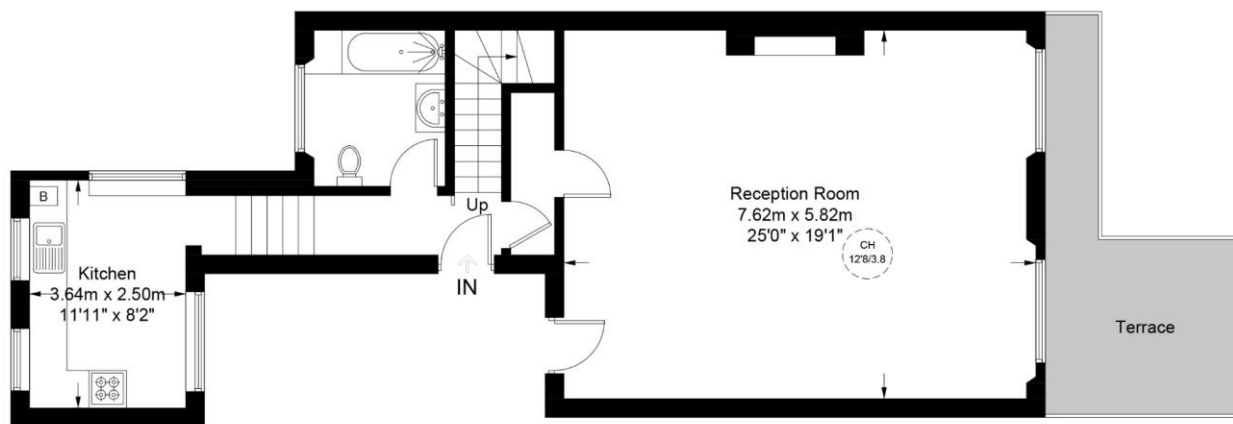


St. Stephens Gardens, W2

Approximate Gross Internal Area = 1364 sq ft / 126.7 sq m



Second Floor



First Floor



**Certified
Property
Measurer**

This plan is for layout guidance only. Not drawn to scale unless stated. Windows and door openings are approximate. Whilst every care is taken in the preparation of this plan, please check all dimensions, shapes and compass bearings before making any decisions reliant upon them. (ID995999)

Chesterton UK Services Limited trading as Chestertons for themselves and for the vendor of this property whose agents they are, give notice that (i) these particulars do not constitute any part of an offer or contract, (ii) all statements contained within these particulars are made without responsibility on the part of Chestertons or the vendor, (iii) whilst made in good faith, none of the statements contained within these particulars are to be relied upon as a statement or representation of fact, (iv) any intending purchasers must satisfy themselves by inspection or otherwise as to the correctness of each of the statements contained within these particulars, (v) the vendor does not make or give either Chestertons or any person in their employment any authority to make or give representation or warranty whatsoever in relation to this property. Wide angle lenses may be used. ©Copyright Chestertons | Chesterton UK Services Limited | Registered Office 40 Connaught Street, Hyde Park, London W2 2AB Registered Company Number 05334580.



This paper is
100% recyclable