



Wood Crescent
White City, W12

CHESTERTONS





This spacious and elegant ground floor apartment, has two bedrooms and two bathrooms, and is designed for luxurious living and entertaining. The modern open-plan kitchen and reception area is perfect for hosting, boasting bespoke built-in appliances, a stylish terrazzo worktop, and ample storage. The expansive reception area offers wonderful views of Hammersmith Park and the serene landscaped Japanese Gardens. Uniquely, the balcony provides complete privacy with walls on either side and spans the entire width of the apartment. The master bedroom has floor-to-ceiling doors opening to another terrace, a walk-in wardrobe, and an en suite bathroom. The second double bedroom also includes custom-built wardrobes and access to the private terrace at the back of the building. There is also a sleek, modern family bathroom with a bath/shower combination along with additional storage available in the hallway.

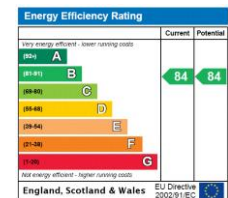
Residents of this apartment enjoy exclusive access to the top-tier amenities at Soho House, including a fully equipped gym, swimming pool, and cinema. Additionally, the property benefits from a 24-hour concierge service, ensuring convenience and security.

Located in the heart of White City. The former BBC Television Centre sits on Wood lane, next to Westfield West London. There are excellent transport links close by with White City Station (approximately 0.1 mile, Central line), Wood Lane (approximately 0.1 mile, Hammersmith & City and Circle lines) and Shepherds Bush (approximately 0.6 miles, Central line and Overground lines).

N.B CGI images used.

- Spacious two bedroom, two bathroom apartment
- Modern open-plan kitchen and reception area
- Private balcony with views of Hammersmith Park
- Access to Soho House gym, swimming pool, and cinema
- 24-hour concierge service

Asking Price £975,000



Tenure: Leasehold. 968 years remaining.
Service Charge: £9697.6 p.a.
Ground Rent: £600
Local Authority: Hammersmith & Fulham
Council Tax Band: F

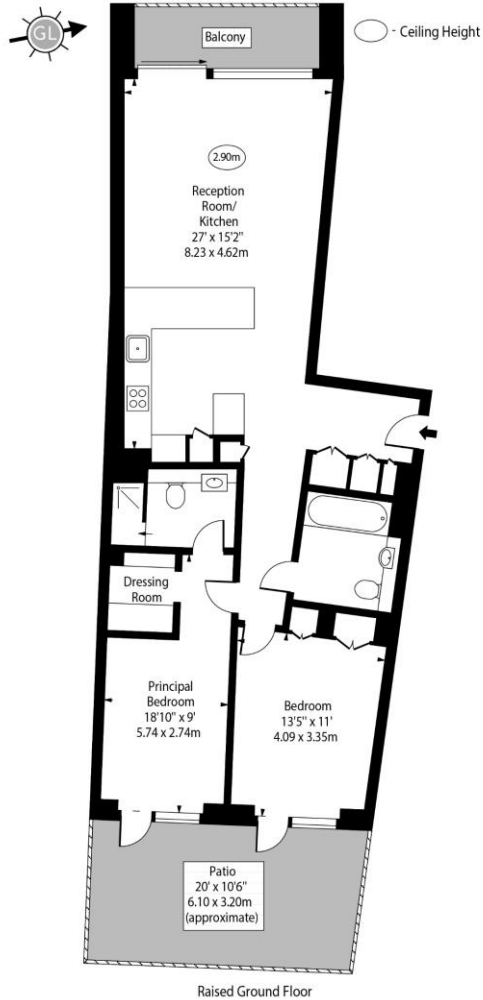
Chestertons Notting Hill Sales

30 Ledbury Road
 Notting Hill
 London
 W11 2AB

nottinghill@chestertons.co.uk

0203 040 8585
chestertons.co.uk

Wood Crescent, W12



Approx Gross Internal Area 955 Sq Ft - 88.72 Sq M

For Illustration Purposes Only - Not To Scale
www.goldlens.co.uk
Ref. No. 024180E

Chesterton Global Ltd trading as Chestertons for themselves and for the vendor of this property whose agents they are, give notice that (i) these particulars do not constitute any part of an offer or contract, (ii) all statements contained within these particulars are made without responsibility on the part of Chestertons or the vendor, (iii) whilst made in good faith, none of the statements contained within these particulars are to be relied upon as a statement or representation of fact, (iv) any intending purchasers must satisfy themselves by inspection or otherwise as to the correctness of each of the statements contained within these particulars, (v) the vendor does not make or give either Chestertons or any person in their employment any authority to make or give representation or warranty whatsoever in relation to this property. Wide angle lenses may be used. ©Copyright Chestertons | Chesterton Global Ltd | Registered Office 40 Connaught Street, Hyde Park, London W2 2AB Registered Company Number 05334580.



This paper is
100% recyclable