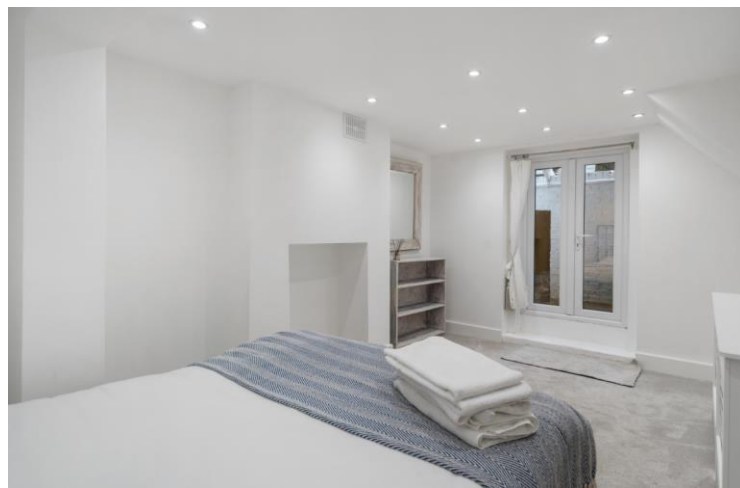




Needham Road
Notting Hill, W11

CHESTERTONS



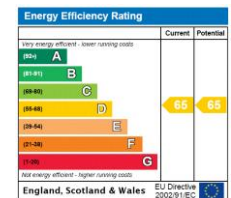


This beautifully presented flat on the ground and lower ground floor is available chain free, and situated in a sought-after area of Notting Hill. On the ground floor the flat has its own private front door, an open plan kitchen and living room, a courtyard garden, and a family bathroom. The lower ground floor features a double bedroom, a spacious office currently used as a bedroom (large enough to accommodate a king-sized bed), and abundant storage in multiple vaults.

Nestled on picturesque Needham Road, just off Westbourne Grove, this flat is ideally located 0.4 miles to Portobello Road and 0.6 miles from Notting Hill Gate underground station providing excellent transport links.

- Own front door
- Bright open plan kitchen living room
- Private patio garden
- Split level
- Great Notting Hill location

Asking Price £880,000



Tenure: Leasehold. 985 years with a Share of Freehold.
Service Charge: Adhoc - Approx. £500 p.a. (building insurance).
Ground Rent: £0
Local Authority: Westminster
Council Tax Band: F

Chestertons Notting Hill Sales

30 Ledbury Road
 Notting Hill
 London
 W11 2AB

nottinghill@chestertons.co.uk

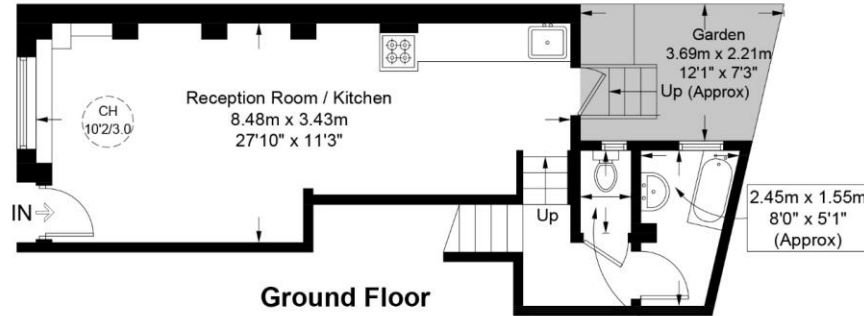
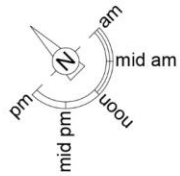
0203 040 8585
 chestertons.co.uk

Needham Road, W11

Approximate Gross Internal Area = 948 sq ft / 88.1 sq m

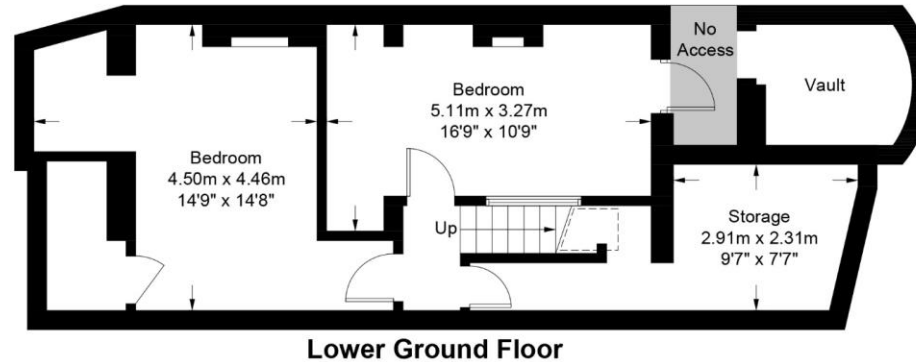
Restricted Height = 6 sq ft / 0.6 sq m

Vault = 46 sq ft / 4.3 sq m



= Reduced headroom below 1.5m / 5'0"

1.30m x 0.80m
4'3" x 2'7"
(Approx)



This plan is for layout guidance only and is not drawn to scale unless stated. All dimensions, including windows, doors, and the Total Gross Internal Area (GIA), are approximate. For precise measurements, please consult a qualified architect or surveyor before making any decisions based on this plan.



Chesterton Global Ltd trading as Chestertons for themselves and for the vendor of this property whose agents they are, give notice that (i) these particulars do not constitute any part of an offer or contract, (ii) all statements contained within these particulars are made without responsibility on the part of Chestertons or the vendor, (iii) whilst made in good faith, none of the statements contained within these particulars are to be relied upon as a statement or representation of fact, (iv) any intending purchasers must satisfy themselves by inspection or otherwise as to the correctness of each of the statements contained within these particulars, (v) the vendor does not make or give either Chestertons or any person in their employment any authority to make or give representation or warranty whatsoever in relation to this property. Wide angle lenses may be used. ©Copyright Chestertons | Chesterton Global Ltd | Registered Office 40 Connaught Street, Hyde Park, London W2 2AB Registered Company Number 05334580.

