



Palace Court  
Notting Hill, W2

CHESTERTONS





A three bedroom, two bathroom raised ground floor flat with an impressive front-to-back reception and kitchen with c.3.6m high ceilings, intricate period features and situated in a pretty period building on Palace Court, Notting Hill.

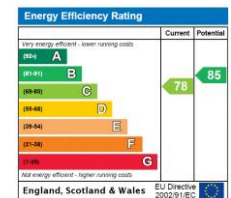
The apartment has the benefit of a Share of the Freehold.

The flat is presented in good order and is being sold by a family who are chain free. Benefiting from c.1314 square feet of lateral space, it consists of a large, semi-open plan kitchen/reception room, which has plenty of space for a large dining table and sofas. There are three double bedrooms to the rear two benefit from built-in wardrobes, two bathrooms (one being en-suite) and plenty of additional storage throughout. It benefits from wooden flooring throughout, excellent light with its floor-to-ceiling windows and a pretty outlook to the front and rear of the property.

Palace Court is one of Bayswater's finest streets and is conveniently located for the many shops and restaurants of Notting Hill Gate, Westbourne Grove, and Queensway. Notting Hill underground (Central, District, & Circle lines) and Queensway (Central line) stations are nearby (0.3 miles from the property) and the green open spaces of Kensington Gardens are a five minute walk away.

- Three bedrooms, two bathrooms.
- Impressive front-to-back reception and kitchen with c.3.6m high ceilings.
- Benefits from a Share of the Freehold.
- Over 1300 square feet of lateral space on one floor.
- One of Bayswater's finest streets and conveniently located for the many shops and restaurants of Notting Hill and Queensway.

Asking Price £1,850,000



**Tenure:** Leasehold 952 years 2 months remaining with a Share of Freehold.  
**Service Charge:** £3,800 p.a.  
**Ground Rent:** £0  
**Local Authority:** Westminster  
**Council Tax Band:** G

**Chestertons Notting Hill Sales**

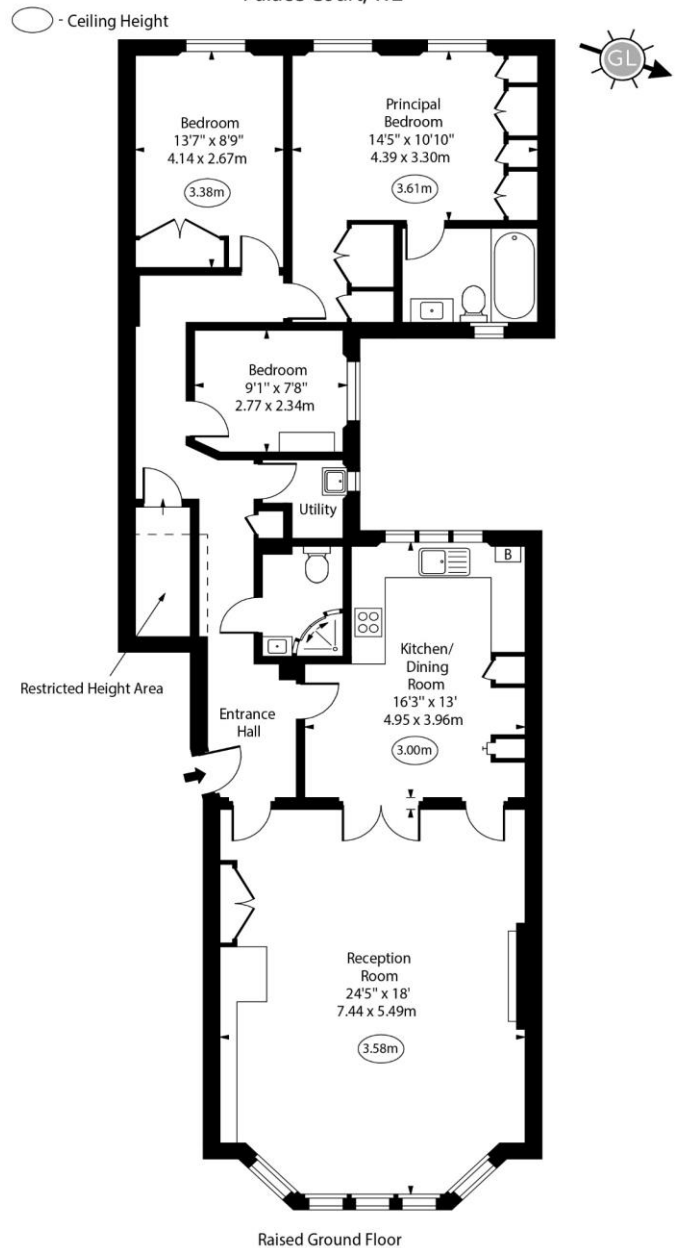
30 Ledbury Road  
 Notting Hill  
 London  
 W11 2AB

[nottinghill@chestertons.co.uk](mailto:nottinghill@chestertons.co.uk)

0203 040 8585

[chestertons.co.uk](http://chestertons.co.uk)

Palace Court, W2



Raised Ground Floor  
 Approx Gross Internal Area 1314 Sq Ft - 122.07 Sq M  
 Approx. Floor Area Including Restricted Heights 1340 Sq Ft - 124.49 Sq M  
 For Illustration Purposes Only - Not To Scale

Chesterton Global Ltd trading as Chestertons for themselves and for the vendor of this property whose agents they are, give notice that (i) these particulars do not constitute any part of an offer or contract, (ii) all statements contained within these particulars are made without responsibility on the part of Chestertons or the vendor, (iii) whilst made in good faith, none of the statements contained within these particulars are to be relied upon as a statement or representation of fact, (iv) any intending purchasers must satisfy themselves by inspection or otherwise as to the correctness of each of the statements contained within these particulars, (v) the vendor does not make or give either Chestertons or any person in their employment any authority to make or give representation or warranty whatsoever in relation to this property. Wide angle lenses may be used. ©Copyright Chestertons | Chesterton Global Ltd | Registered Office 40 Connaught Street, Hyde Park, London W2 2AB Registered Company Number 05334580.

