



## Gillespie Court, Queensland Terrace, Queensland Road, Islington, N7

Price **£440 per week** | Furnished



# Gillespie Court, Queensland Terrace, Queensland Road, Islington, N7



2 Bedrooms



1 Bathroom



1 Reception



Balcony



Gymnasium



Local Amenities



24-Hour Concierge

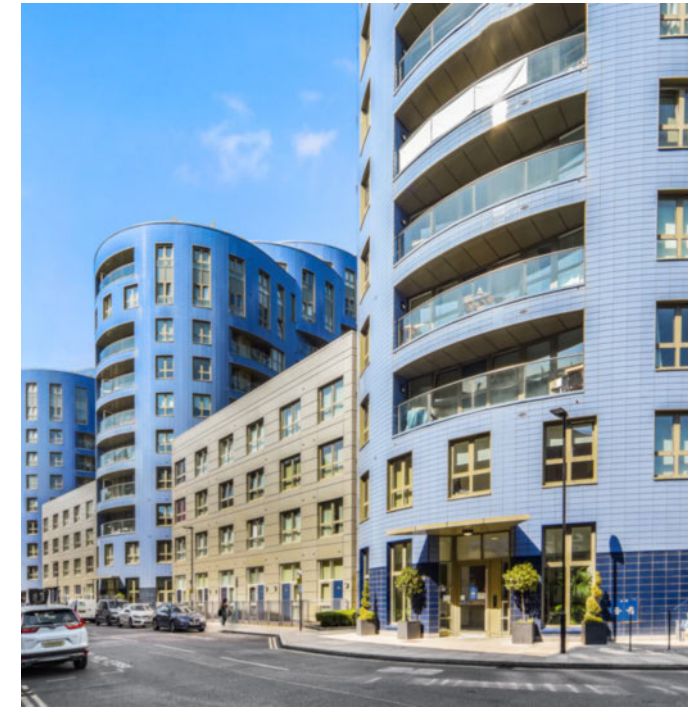


0.1 MI Drayton Park

\*PHOTOS FOR ILLUSTRATIVE PURPOSES ONLY\*

Immaculate two bedroom furnished apartment set within Islington's iconic Queensland Terrace. A striking residential development of distinctive towers adjacent to Arsenal's world-famous Emirates Stadium. This property comprises open-plan living area, high-spec kitchen with integrated appliances, private balcony, two sizable bedrooms with fitted wardrobes and a pristine bathroom suite.

Residents benefit from 24-hour concierge, landscaped podium gardens and a gymnasium. A striking residential development of three distinctive towers adjacent to Arsenal's world-famous Emirates Stadium. Exceptional transport links run from Holloway Road (0.3 miles), Highbury & Islington (0.7 MI) and Finsbury Park stations servicing routes along Piccadilly, Victoria, Great Northern, Overground and Thameslink lines.



**Local Authority:**

Islington London

**Council Tax Band:**

E

**EPC:**

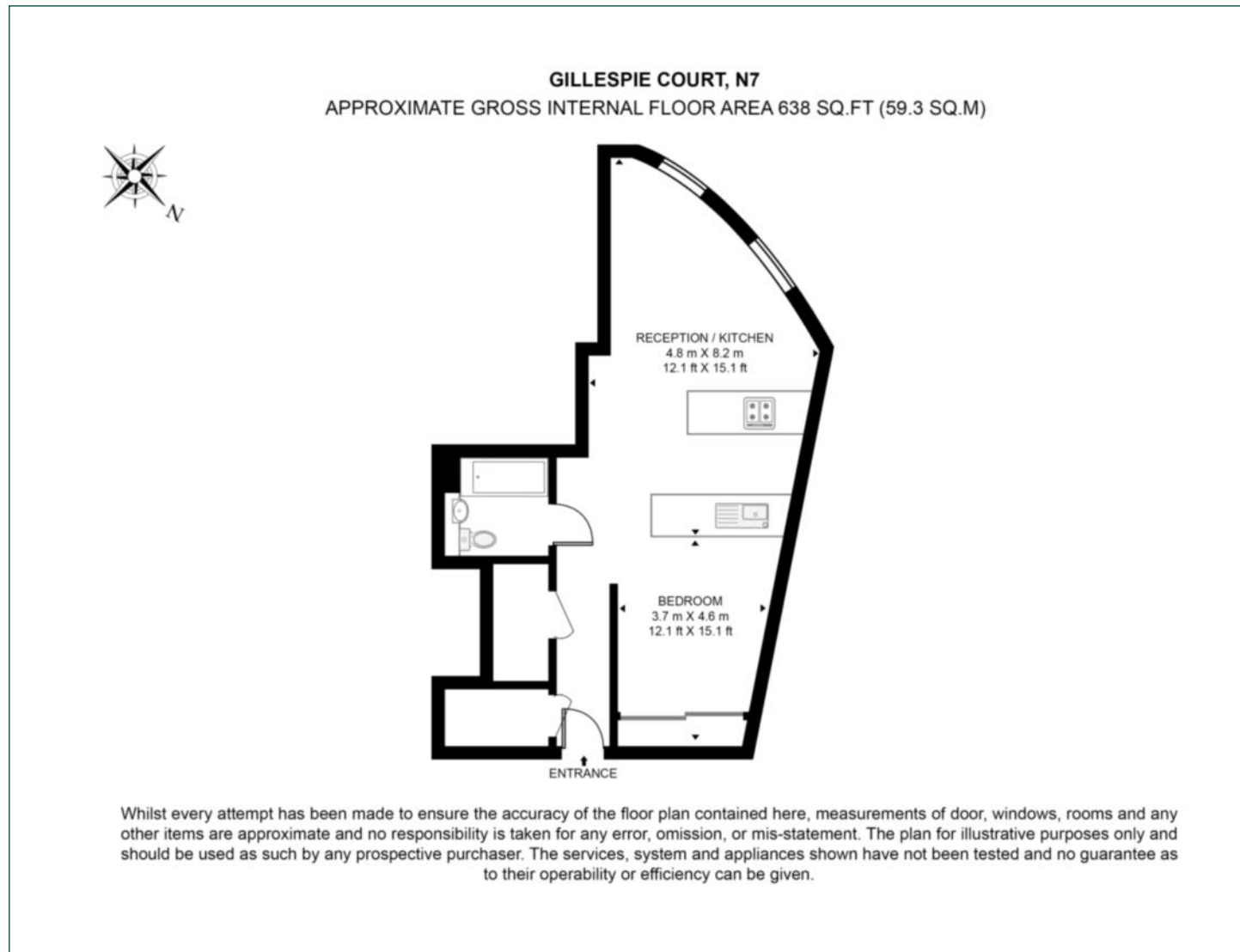
B

**Security deposit:**

equivalent to 5 weeks' rent

# Floorplan

732 sq ft | 68 sq m



## City & Aldgate

122 Whitechapel High Street, London, E1 7PT

## Lettings

020 7247 3888 | [city.lettings@chaseevans.co.uk](mailto:city.lettings@chaseevans.co.uk)

## We're here to help.

IMPORTANT NOTICE - These particulars have been prepared in good faith and they are not intended to constitute part of an offer or contract. We have not performed a structural survey on this property and the services, appliances and specific fittings have not been tested. All photographs, measurements, floor plans and distances referred to are given as a guide and should not be relied upon.

[chaseevans.com](https://www.chaseevans.com)