



## Crawford Building, Whitechapel High Street, Aldgate E1

OIEO **£500,000** | Leasehold





# Crawford Building, Whitechapel High Street, Aldgate E1



1 Bedroom



1 Bathroom



1 Reception



Balcony



Local Amenities



24-Hour Concierge



0.1 MI Aldgate

This fantastic one bedroom property is part of an exceptional development, offering stunning views of the City. The upscale living space features high-end finishes, including a fully equipped modern kitchen and elegant wooden flooring, complemented by recessed lighting.

The bedroom includes fitted storage for added convenience, and the stylish bathroom is tiled with contemporary fixtures. Additionally, there's a private balcony for your enjoyment.

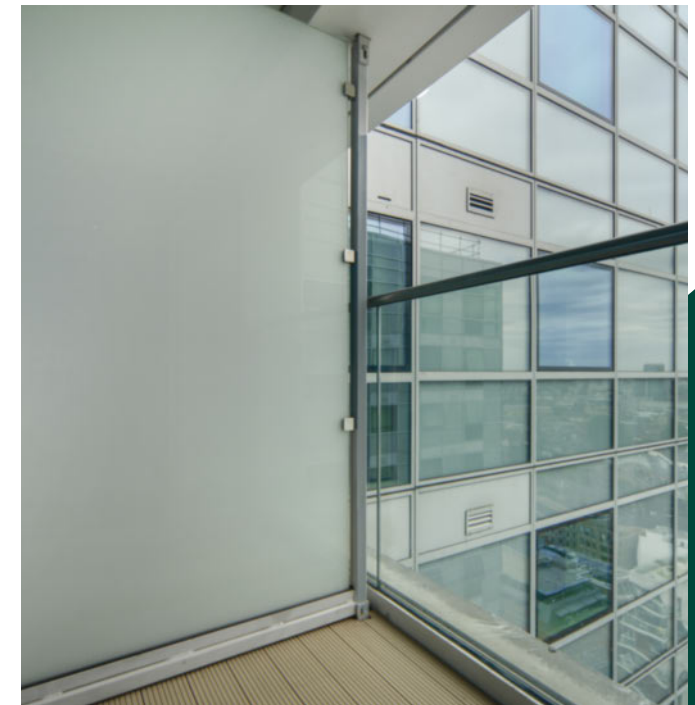
Residents will also have access to a 24-hour concierge service. There are several amenities located nearby including restaurants, bars, cafés, restaurants and attractions such as Spitalfields Market. Ideally situated on the edge of the City of London, within walking distance of Shoreditch and Tower Hill.

The development is conveniently located above Aldgate East Underground station, providing a valuable transport link for commutes across the City and towards the West End.

**Tenure:** Leasehold (123 years remaining) **Local Authority:** Tower Hamlets

**Ground Rent:** £300 p.a. **Council Tax Band:** E

**Service Charge:** £4,055 p.a. **EPC:** B



# Floorplan

474 sq ft | 44 sq m



**CRAWFORD BUILDING, E1**  
APPROXIMATE GROSS INTERNAL FLOOR AREA 474 SQ.FT (44 SQ.M)



Whilst every attempt has been made to ensure the accuracy of the floor plan contained here, measurements of door, windows, rooms and any other items are approximate and no responsibility is taken for any error, omission, or mis-statement. The plan for illustrative purposes only and should be used as such by any prospective purchaser. The services, system and appliances shown have not been tested and no guarantee as to their operability or efficiency can be given.

## City & Aldgate

122 Whitechapel High Street, London, E1 7PT

## Sales

020 7488 2777 | [city.sales@chaseevans.com](mailto:city.sales@chaseevans.com)

## We're here to help.

IMPORTANT NOTICE - These particulars have been prepared in good faith and they are not intended to constitute part of an offer or contract. We have not performed a structural survey on this property and the services, appliances and specific fittings have not been tested. All photographs, measurements, floor plans and distances referred to are given as a guide and should not be relied upon.

[chaseevans.com](http://chaseevans.com)