



## Cordage House, Cobblestone Square, Wapping E1W

Asking price **£320,000** | Leasehold





# Cordage House, Cobblestone Square, Wapping E1W



Studio



1 Bathroom



1 Reception



Balcony



Gym



Spa & Sauna



Screening Room



24-Hour Concierge



0.4 MI Wapping

Introducing a contemporary studio suite located on the 3rd floor of Cordage House, nestled in the vibrant heart of Wapping, E1W. This stylish space boasts a cosy, partitioned sleeping area complete with a fitted sliding door wardrobe, as well as a modern shower room.

The bright and spacious living area showcases a fully equipped and integrated kitchen, complemented by expansive full-height glazing that opens up to a sizable south-facing balcony.

Residents of Cordage House benefit from a 24-hour concierge service, leisure facilities and all the local

amenities of Tower Bridge and St. Katherine's Dock.

Wapping Overground Station is around 5-min walk away, making journeys to areas such as Canary Wharf and Bank just 12 mins. Locally, there are plenty of public green spaces including Wapping Rose Gardens, Wapping Gardens and Wapping Woods, all 1 min, 3 mins and 9 mins away respectively.

The illustrious, grade 1 listed Tobacco Dock warehouse is just 3-min walk away and frequently puts on many multifarious events; from business to music, creative & cultural, Tobacco Dock provides it all.

**Tenure:** Leasehold (985 years remaining)

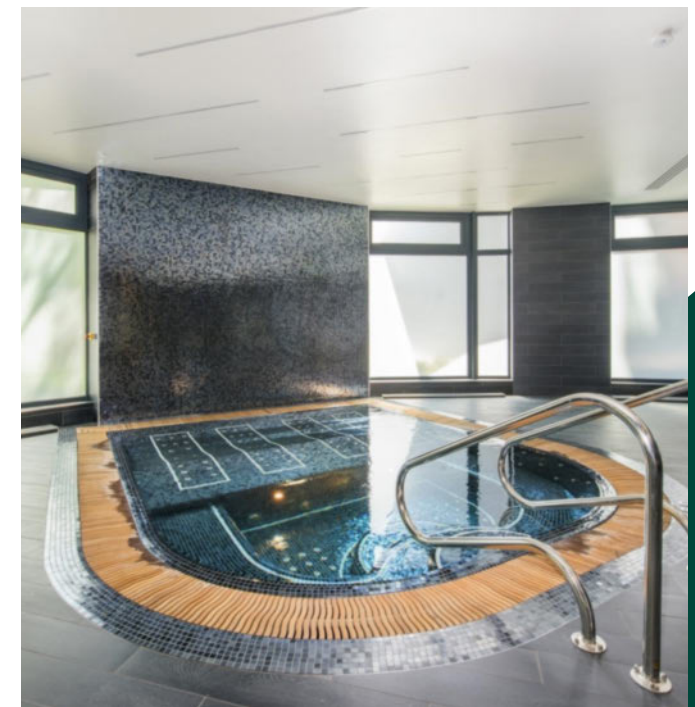
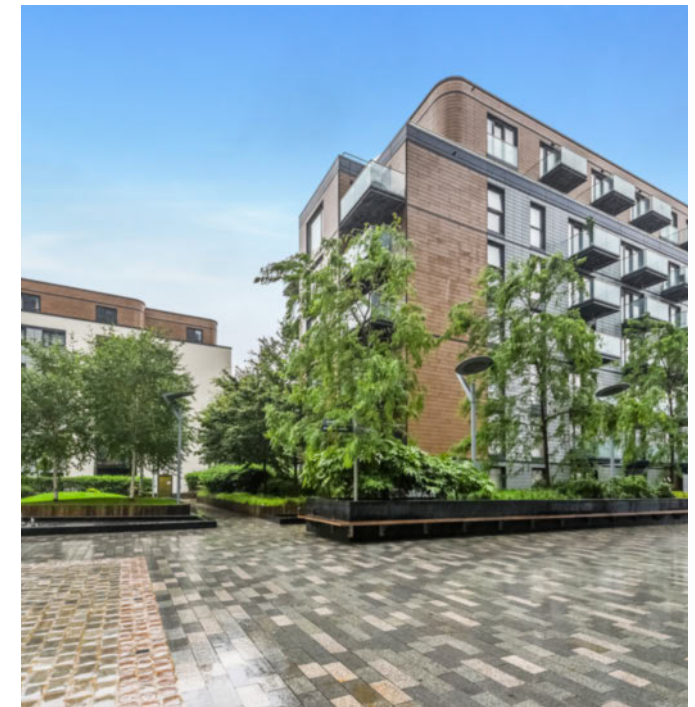
**Local Authority:** Tower Hamlets

**Ground Rent:** £400 p.a.

**Council Tax Band:** C

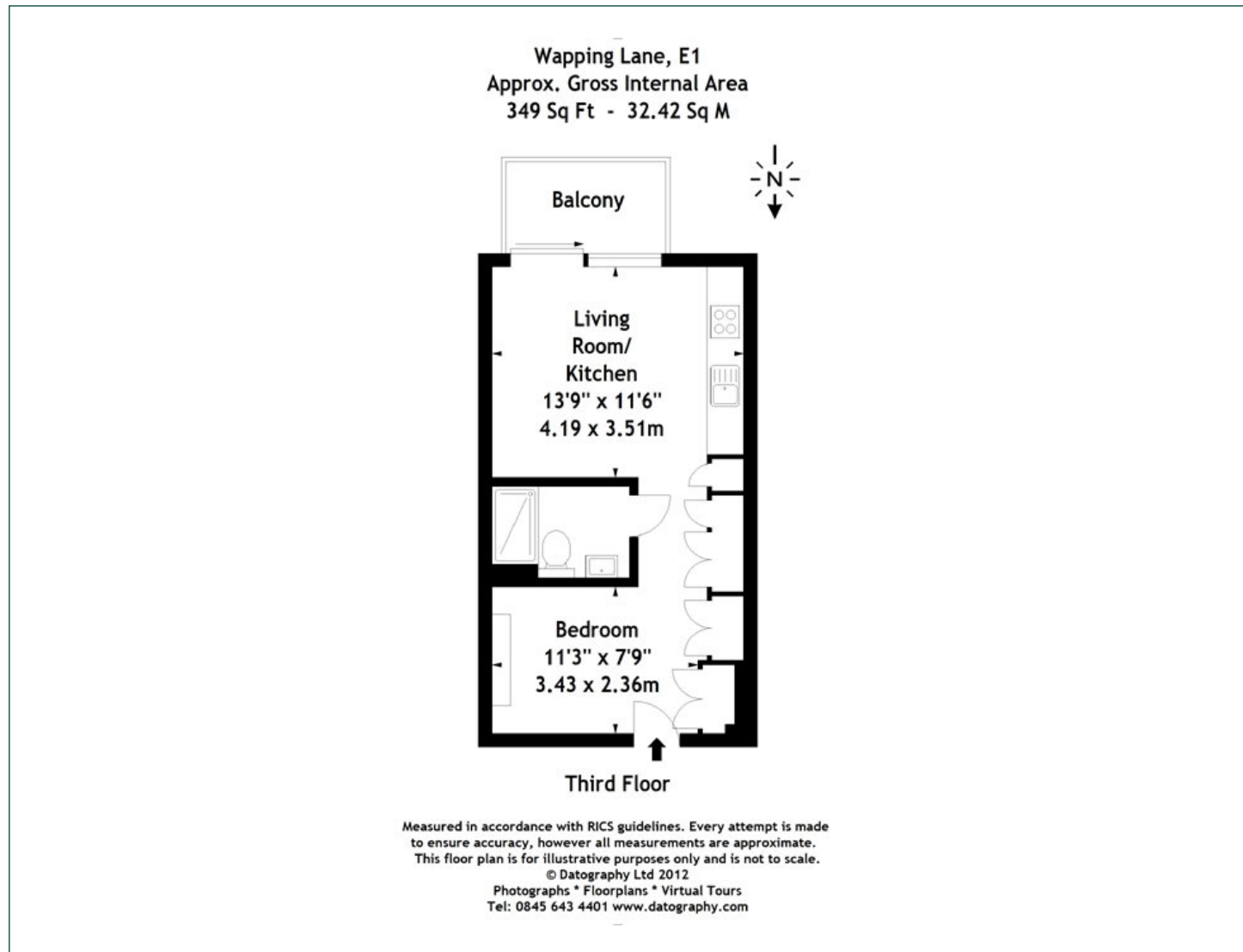
**Service Charge:** £3,137.12

**EPC:** B



# Floorplan

349 sq ft | 32.42 sq m



## City & Aldgate

122 Whitechapel High Street, London, E1 7PT

## Sales

020 7488 2777 | [city.sales@chaseevans.com](mailto:city.sales@chaseevans.com)

## We're here to help.

IMPORTANT NOTICE - These particulars have been prepared in good faith and they are not intended to constitute part of an offer or contract. We have not performed a structural survey on this property and the services, appliances and specific fittings have not been tested. All photographs, measurements, floor plans and distances referred to are given as a guide and should not be relied upon.

[chaseevans.com](http://chaseevans.com)

 Chase Evans