



Kensington Apartments, Commercial Street, Aldgate, E1

Asking price **£985,000** | Leasehold



Kensington Apartments, Commercial Street, Aldgate, E1



3 Bedrooms



2 Bathrooms



1 Reception



Balcony



Gymnasium



Secure Underground Parking



24-Hour Concierge



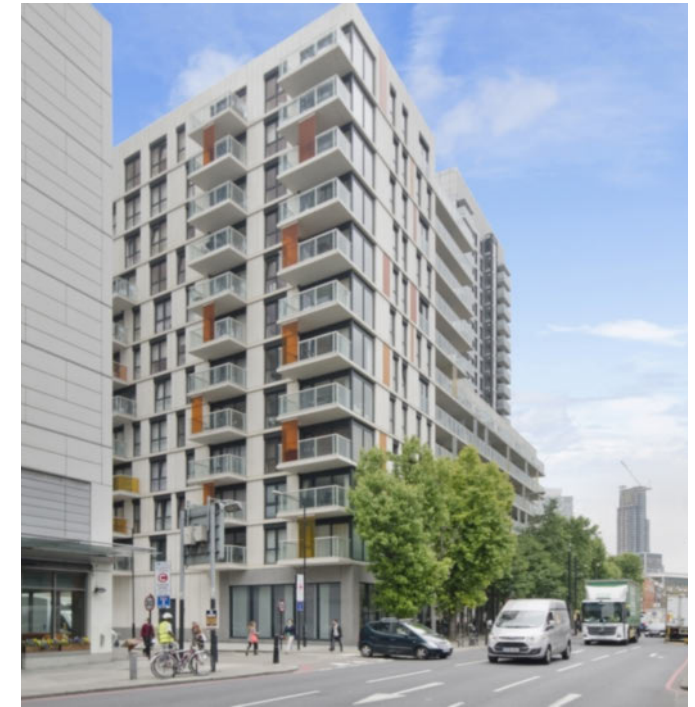
0.1 MI Aldgate East

This impressive three bedroom, two bathroom residence is situated within the Cityscape development in Aldgate.

The apartment features a generous open-plan living area, a stylish kitchen equipped with integrated Siemens appliances and an island unit, oak wood flooring throughout, and expansive full-length windows. The master bedroom includes an ensuite, while a private west-facing balcony offers stunning city skyline views. Additionally, secure underground parking is included.

Residents will also have access to a 24-hour concierge service, private landscaped courtyards, state-of-the-art gymnasium and a roof terrace with 360° views across London. There are several amenities located nearby including restaurants, bars, cafés and attractions such as Spitalfields Market.

The development is located near several transport links including Aldgate East Underground station, and is conveniently placed for amenities of Spitalfields and Whitechapel.



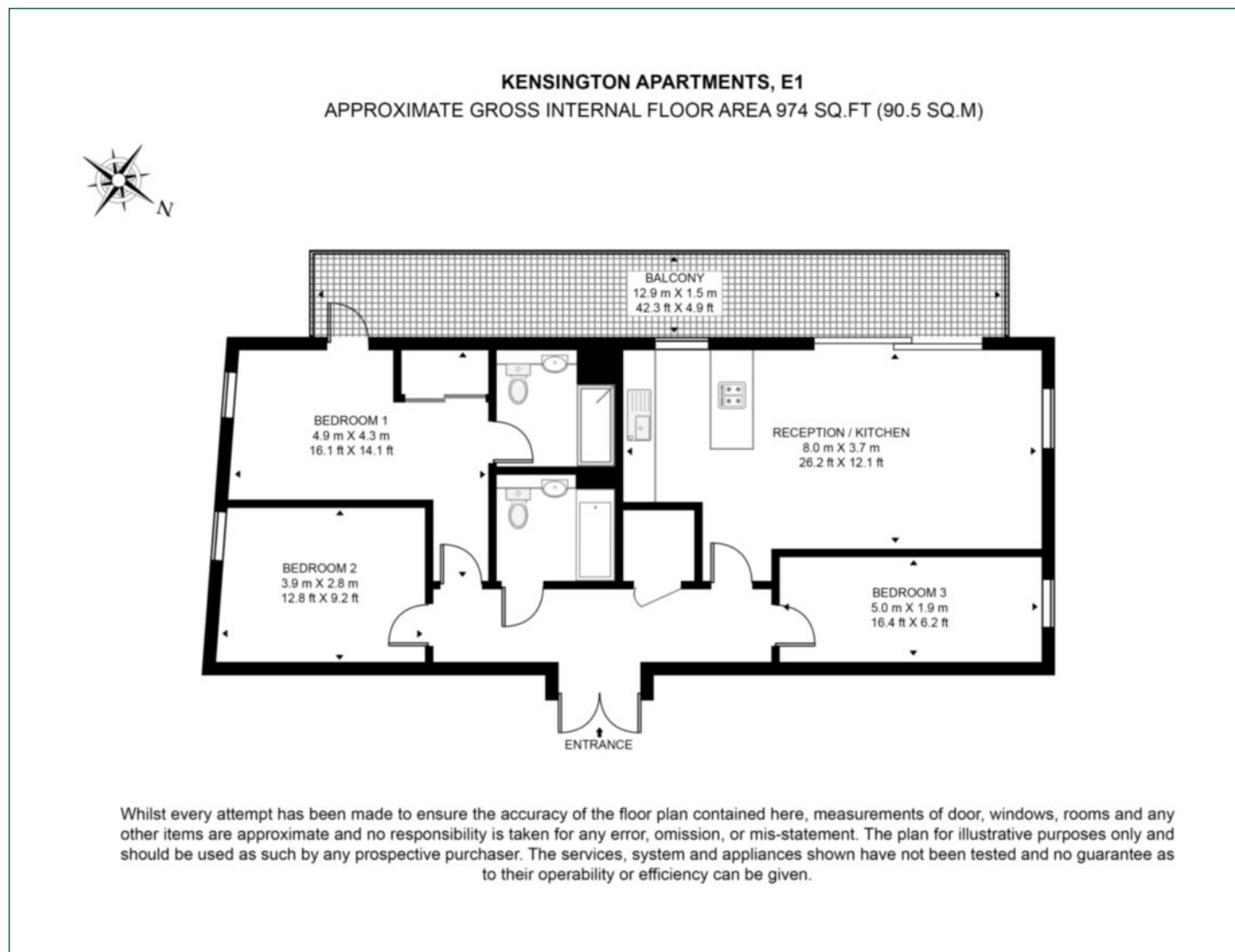
Tenure: Leasehold (987 years remaining) **Local Authority:** Tower Hamlets

Ground Rent: £300 p.a. **Council Tax Band:** G

Service Charge: £8,074.36 p.a. **EPC:** B

Floorplan

974 sq ft | 90.5 sq m



City & Aldgate

122 Whitechapel High Street, London, E1 7PT

Sales

020 7488 2777 | city.lettings@chaseevans.co.uk

We're here to help.

IMPORTANT NOTICE - These particulars have been prepared in good faith and they are not intended to constitute part of an offer or contract. We have not performed a structural survey on this property and the services, appliances and specific fittings have not been tested. All photographs, measurements, floor plans and distances referred to are given as a guide and should not be relied upon.

chaseevans.com

 Chase Evans