



## Sterling Mansions, Goodman's Fields, Aldgate, E1

Price **£1,100 per week** | Furnished



# Sterling Mansions, Goodman's Fields, Aldgate, E1



2 Bedrooms



2 Bathrooms



1 Reception



Private Terrace with City Views



24-Hour Concierge



Secure Parking



Prime Location



0.3 MI Aldgate East

This spacious and elegant, luxury two bedroom, two bathroom penthouse apartment with a terrace and secure parking is set within a converted Edwardian mansion, part of iconic Goodman's Field development, a short walk from the City, Aldgate and Whitechapel, E1. Set on the lower floor is a wonderfully bright living/dining area which opens onto a long private terrace overlooking the City, an contemporary open-plan kitchen with fully integrated appliances and a guest cloakroom. A flight of stairs up is the spacious master bedroom with en suite bathroom and dressing area, a further double bedroom and a bathroom.

The property features large glazing, floor-to-ceiling glass wall with sliding doors to the terrace, a sleek kitchen island with an integrated hob, top-end kitchen appliances and gloss cabinetry, wood flooring, underfloor heating, and luxury bathroom fixtures.

Residents of Goodman's Field have access to a 24-hour concierge and fitness facilities. Located moments from Aldgate East Underground Station and Aldgate Station for access to Hammersmith & City, District, Circle and Metropolitan lines.

**Local Authority:**

Tower Hamlets

**Council Tax Band:**

G

**EPC:**

B

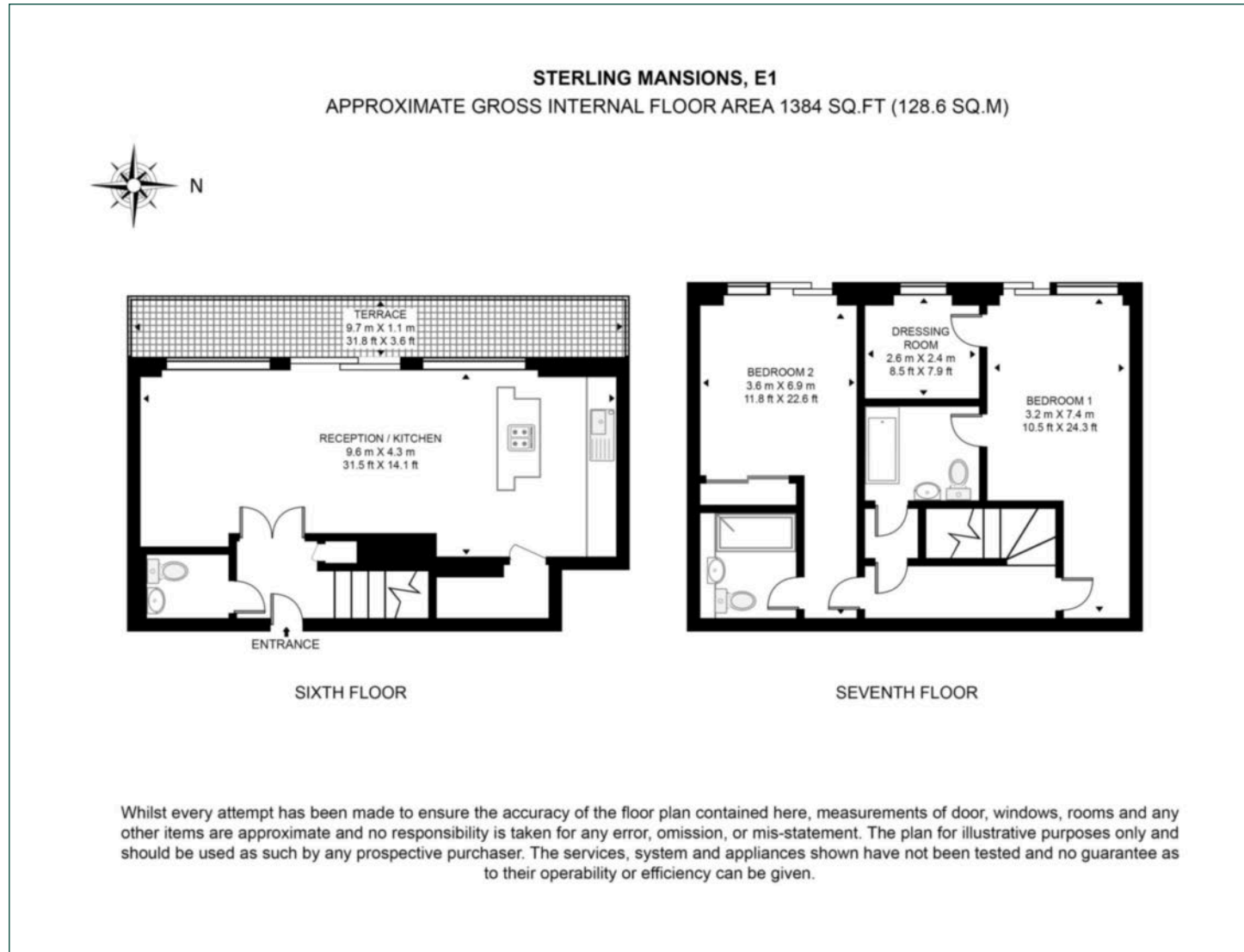
**Security deposit:**

equivalent to 5 weeks' rent



# Floorplan

1,384 sq ft | 128.6 sq m



## City & Aldgate

122 Whitechapel High Street, London, E1 7PT

## Lettings

020 7247 3888 | [city.lettings@chaseevans.com](mailto:city.lettings@chaseevans.com)

## We're here to help.

IMPORTANT NOTICE - These particulars have been prepared in good faith and they are not intended to constitute part of an offer or contract. We have not performed a structural survey on this property and the services, appliances and specific fittings have not been tested. All photographs, measurements, floor plans and distances referred to are given as a guide and should not be relied upon.

[chaseevans.com](http://chaseevans.com)

 Chase Evans