



Landmark Place, Sugar Quay, Water Lane, Tower Bridge, EC3R

Price **£1,125 per week** | Furnished



Landmark Place, Sugar Quay, Water Lane, Tower Bridge, EC3R



2 Bedrooms



2 Bathrooms



1 Reception



Balcony



Gymnasium



Local Amenities



24-Hour Concierge



0.2 MI Tower Hill

Luxury two bedroom, two bathroom apartment with a balcony in the exclusive Landmark Place riverside development next to historic Tower of London.

There is a large and bright open plan kitchen/living room, modern fitted kitchen with integrated high-end kitchen appliances, floor to ceiling glazing, recessed lighting, two large bedrooms, master with walk in wardrobe and en-suite and further second bathroom, ample storage throughout. Features include underfloor heating, comfort cooling, remote controlled window coverings and smart

bathroom fittings.

Residents benefit from 24-hour concierge services, a fitness suite including a swimming pool, sauna, steam room, treatment room and gym. There is also a cinema room and lounge area. Underground cycle storage facilities are available. The nearest station is Tower Hill with Circle and District line services.



Local Authority:

City of London

Council Tax Band:

G

EPC:

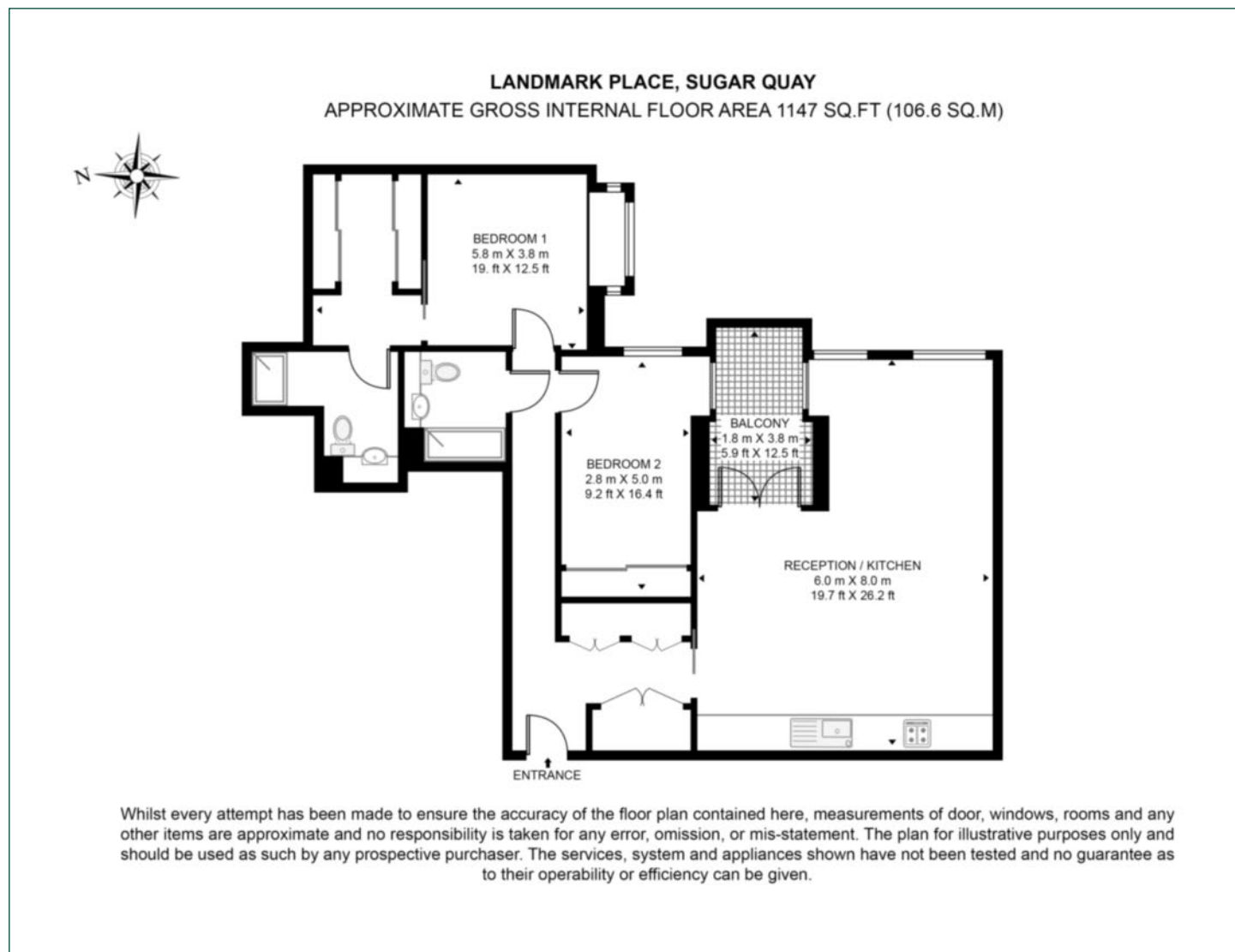
B

Security deposit:

equivalent to 5 weeks' rent

Floorplan

1,147 sq ft | 106.6 sq m



City & Aldgate

122 Whitechapel High Street, London, E1 7PT

Lettings

020 7247 3888 | city.lettings@chaseevans.com

We're here to help.

IMPORTANT NOTICE - These particulars have been prepared in good faith and they are not intended to constitute part of an offer or contract. We have not performed a structural survey on this property and the services, appliances and specific fittings have not been tested. All photographs, measurements, floor plans and distances referred to are given as a guide and should not be relied upon.

chaseevans.com