



Lattice House, Alie Street, Aldgate, E1

Price **£530 per week** | Furnished



Lattice House, Alie Street, Aldgate, E1



1 Bedroom



1 Bathroom



1 Reception



Balcony



Bicycle Storage



Local Amenities



0.2 MI Aldgate East

A stunning one bedroom property with a south-facing balcony within a modern development located in Aldgate. The apartment includes a light, inviting open-plan living space with a fully integrated kitchen leading out to a generous balcony, wood flooring, recessed lighting, a good sized-bedroom with fitted storage and a chic contemporary bathroom.

The residents enjoy access to a secure entrance and bike storage. There are several amenities located nearby including restaurants, bars, cafés, shops and cultural attractions including the Whitechapel

Gallery, Brick Lane and the Spitalfield Markets. The development is located close to several transport links including Aldgate East Underground station (6mins walk), ideal for commutes along Circle and District lines.

Local Authority:

Tower Hamlets

Council Tax Band:

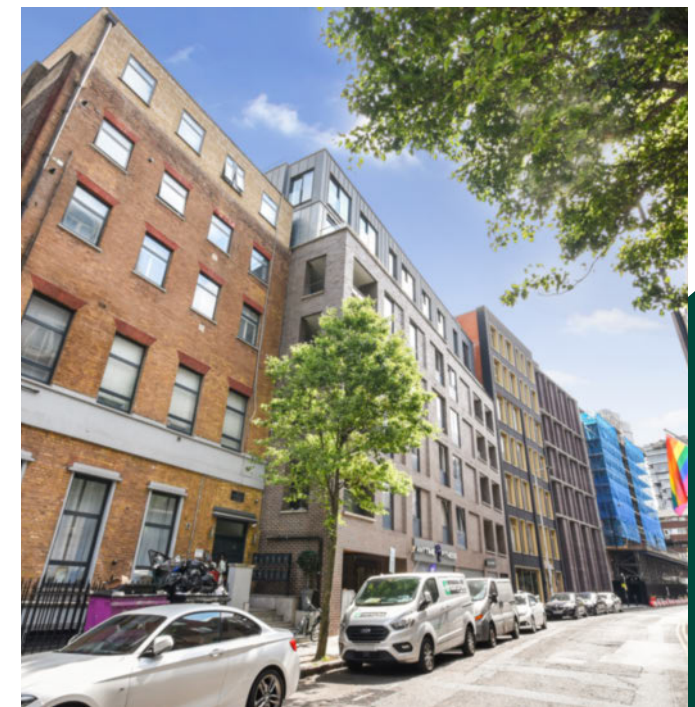
E

EPC:

B

Security deposit:

equivalent to 5 weeks' rent

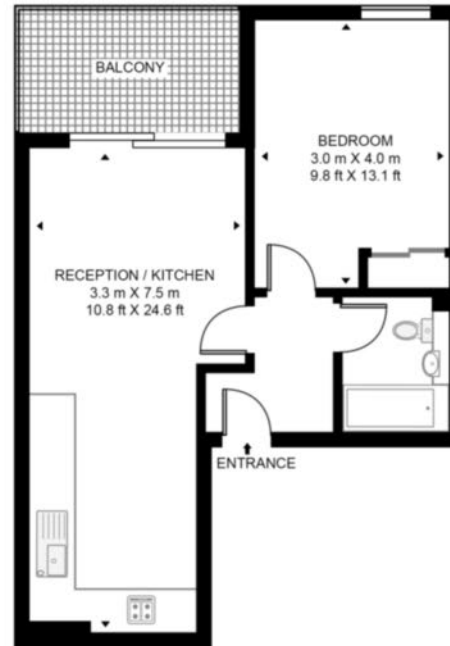


Floorplan

453 sq ft | 42.1 sq m



LATTICE HOUSE, 20 ALIE STREET, E1
APPROXIMATE GROSS INTERNAL FLOOR AREA 453 SQ.FT (42.1 SQ.M)



Whilst every attempt has been made to ensure the accuracy of the floor plan contained here, measurements of door, windows, rooms and any other items are approximate and no responsibility is taken for any error, omission, or mis-statement. The plan for illustrative purposes only and should be used as such by any prospective purchaser. The services, system and appliances shown have not been tested and no guarantee as to their operability or efficiency can be given.

City & Aldgate

122 Whitechapel High Street, London, E1 7PT

Lettings

020 7488 2777 | city.lettings@chaseevans.com

We're here to help.

IMPORTANT NOTICE - These particulars have been prepared in good faith and they are not intended to constitute part of an offer or contract. We have not performed a structural survey on this property and the services, appliances and specific fittings have not been tested. All photographs, measurements, floor plans and distances referred to are given as a guide and should not be relied upon.

chaseevans.com

 Chase Evans