

Signature House, Postmark, Jubilee Walk, Clerkenwell, WC1X

Price **£975 per week** | Furnished



Signature House, Postmark, Jubilee Walk, Clerkenwell, WC1X



2 Bedrooms



1 Bathroom



1 Reception



Balcony



Gymnasium



Local Amenities



Prime Location



24-Hour Concierge



0.4 MI Chancery Lane

Brand new, stunning two bedroom apartment offered furnished set within the luxury Postmark development in the heart of Central London. The apartment comprises a spacious dual aspect open plan reception/kitchen area extending onto a generous balcony, stylish fitted kitchen with integrated appliances, floor to ceiling glazing, wood flooring, two large bedrooms both with built in wardrobes, master with en-suite and a luxury bathroom suite. Ample storage throughout including a large utility cupboard in the hallway.

Residents have access to gym, cinema, private dining room, 24-hour concierge service, private lounge, rooftop terrace. Signature Place is the second phase of Postmark and provides residents with a chance to reside in the heart of London City. The contemporary one, two and three-bedroom apartments feature high-quality specifications, along with private residents'

podium gardens and roof terraces.

Postmark is located at the vibrant crossroads of King's Cross, Bloomsbury, Clerkenwell and Farringdon. Straddling WC1 and EC1, an address at Postmark puts the whole of Central London at the residents' doorstep. From worldwide retail brands on Bond Street to the latest exhibition at Tate Modern, they are surrounded by world-renowned cultural, shopping and culinary experiences.

Commute to London and beyond is quick and easy as the development is within easy reach from four Underground stations as well as the Elizabeth Line, Metropolitan, Circle and Hammersmith & City lines. Each of London's five airports is also within an hour's drive from the property.

Local Authority:

Camden London

Council Tax Band:

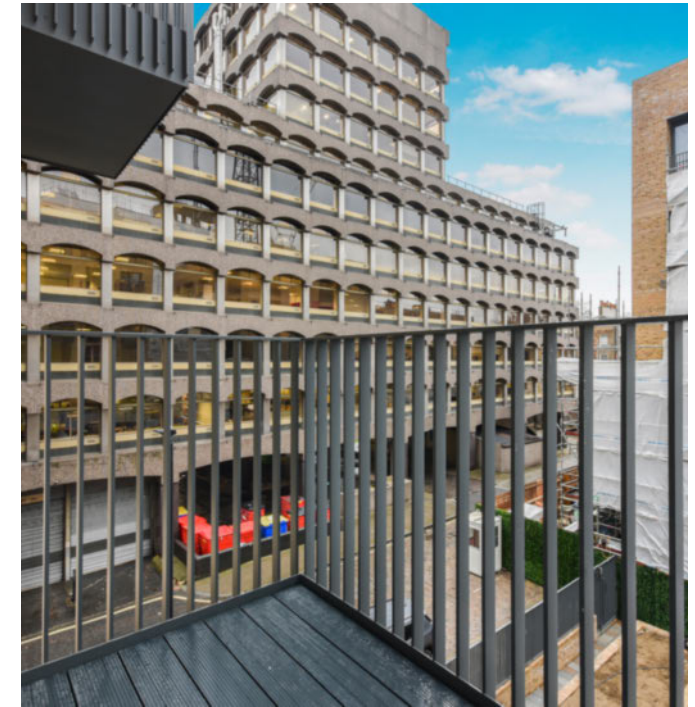
TBC

EPC:

TBC

Security deposit:

equivalent to 5 weeks' rent

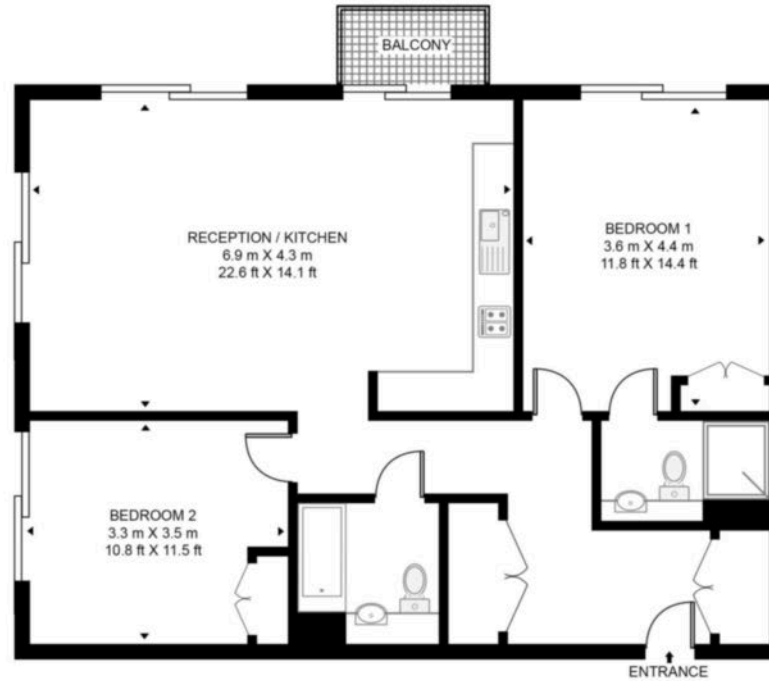


Floorplan

878 sq ft | 81.6 sq m



SIGNATURE HOUSE, POSTMARK, WC1X
APPROXIMATE GROSS INTERNAL FLOOR AREA 878 SQ.FT (81.6 SQ.M)



Whilst every attempt has been made to ensure the accuracy of the floor plan contained here, measurements of door, windows, rooms and any other items are approximate and no responsibility is taken for any error, omission, or mis-statement. The plan for illustrative purposes only and should be used as such by any prospective purchaser. The services, system and appliances shown have not been tested and no guarantee as to their operability or efficiency can be given.

City & Aldgate

122 Whitechapel High Street, London, E1 7PT

Lettings

020 7247 3888 | city.lettings@chaseevans.co.uk

We're here to help.

IMPORTANT NOTICE - These particulars have been prepared in good faith and they are not intended to constitute part of an offer or contract. We have not performed a structural survey on this property and the services, appliances and specific fittings have not been tested. All photographs, measurements, floor plans and distances referred to are given as a guide and should not be relied upon.

chaseevans.com

 Chase Evans