




Cashmere House, Goodman's Fields, Leman Street, Aldgate, E1

Asking price **£1,250,000** | Leasehold



Cashmere House, Goodman's Fields, Leman Street, Aldgate, E1

-  3 Bedrooms
-  3 Bathrooms
-  1 Reception
-  3 Private Balconies
-  24-Hour Concierge
-  Gymnasium
-  Swimming Pool
-  Local Amenities
-  0.2 MI Aldgate East

Luxury three bedroom, three bathroom property by Berkeley Homes' development set within Goodman's Fields - a fantastic E1 central London location.

Features a spacious open-plan living area, a high spec stylish fitted integrated kitchen and breakfast bar, floor to ceiling glazing, large sliding doors leading onto the private balcony, wood flooring, recessed lighting through-out, three large bedrooms with fitted storage, two with en-suites, modern family bathroom with smart fittings and fixtures, three balconies and ample storage through-out.

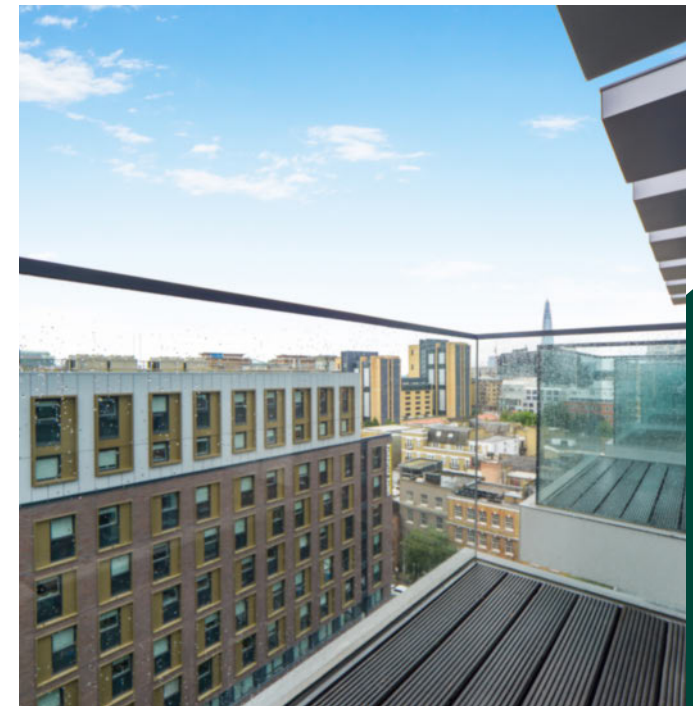
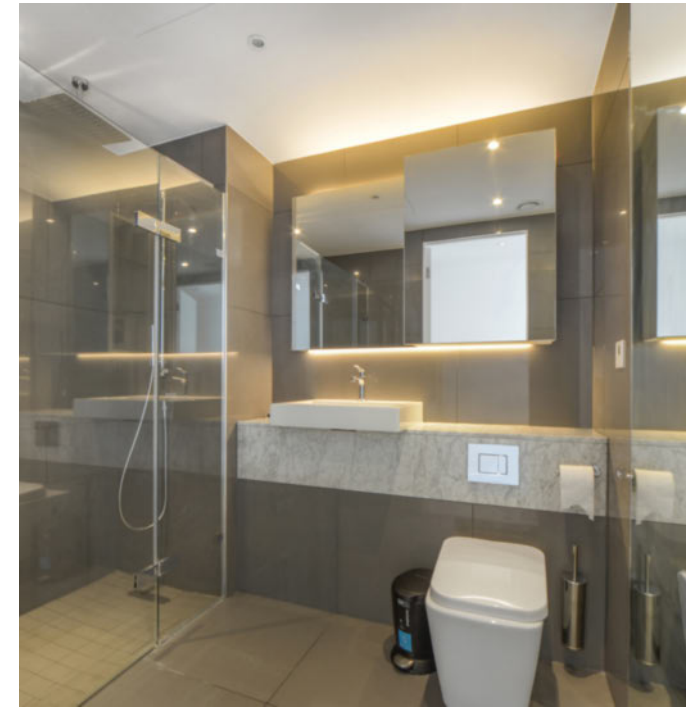
Residents will also have access to a 24-hour concierge service, business lounge, swimming pool, residents' gymnasium, spa facilities, private cinema and two acres of communal landscaped gardens.

There are several amenities located nearby including restaurants, bars, cafés shops and cultural attractions including the Whitechapel Gallery. The development is located near to several transport links including Aldgate East Underground station (0.2 MI), ideal for commutes along Circle and District lines. Elizabeth Line services operate from Whitechapel (0.7MI away), Canary Wharf just 3mins and Bond Street in 10mins.

Tenure: Leasehold (988 years remaining) **Local Authority:** Tower Hamlets

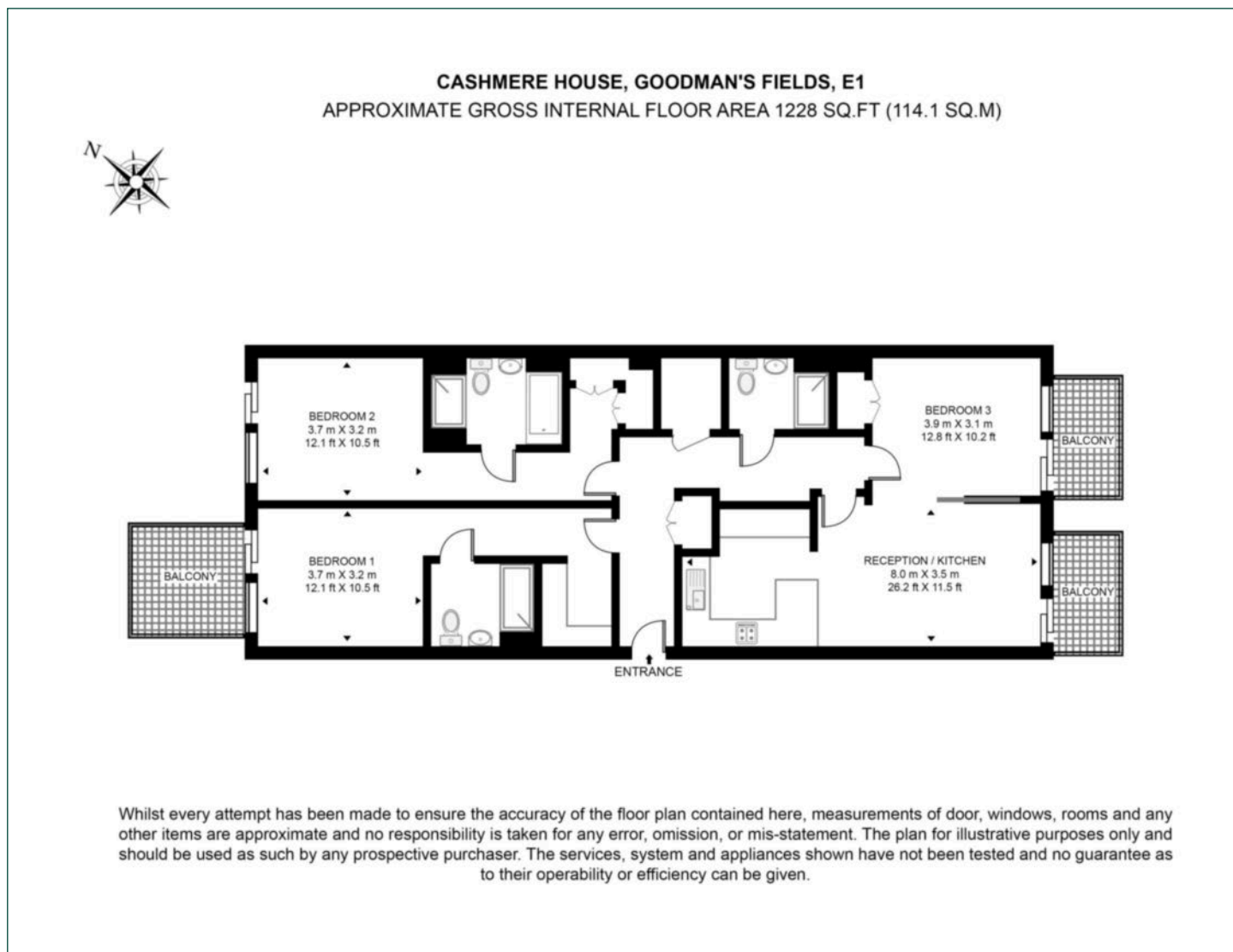
Ground Rent: £700 p.a. **Council Tax Band:** H

Service Charge: £13,000 p.a. **EPC:** B



Floorplan

1,228 sq ft | 114.1 sq m



City & Aldgate

122 Whitechapel High Street, London, E1 7PT

Sales

0207 488 2777 | city.sales@chaseevans.co.uk

We're here to help.

IMPORTANT NOTICE - These particulars have been prepared in good faith and they are not intended to constitute part of an offer or contract. We have not performed a structural survey on this property and the services, appliances and specific fittings have not been tested. All photographs, measurements, floor plans and distances referred to are given as a guide and should not be relied upon.

[chaseevans.com](https://www.chaseevans.com)

 Chase Evans