

Ariel House, London Dock, Vaughan Way, Wapping, E1W

Price **£615 per week** | Furnished



Ariel House, London Dock, Vaughan Way, Wapping, E1W



Studio



1 Bathroom



1 Reception



Balcony



24-Hour Concierge



Fitness Facilities



Local Amenities



0.5 MI Wapping

A stylish and well proportioned studio apartment with a balcony in London Dock, a fantastic development at the heart of Wapping E1W. The generous open plan living area incorporates a modern fully integrated kitchen with a breakfast bar and dining area, a sliding glass door separating the sleeping quarters with a large built-in wardrobe, a luxury bathroom tiled with a smart shower and a spacious balcony overlooking the fountains.

Residents have access to on-site fitness and leisure facilities and 24-hour concierge service.

There are several amenities located nearby, including cafés, bars and cultural attractions, for example, the Whitechapel Gallery. St Katherine's Dock and Butlers Wharf provide a great selection of places to grab a quick coffee or enjoy a meal. The development is located near to Wapping station, served by underground, rail and DLR services for commutes to destinations within the city and towards the West End.

Local Authority:

Tower Hamlets

Council Tax Band:

E

EPC:

B

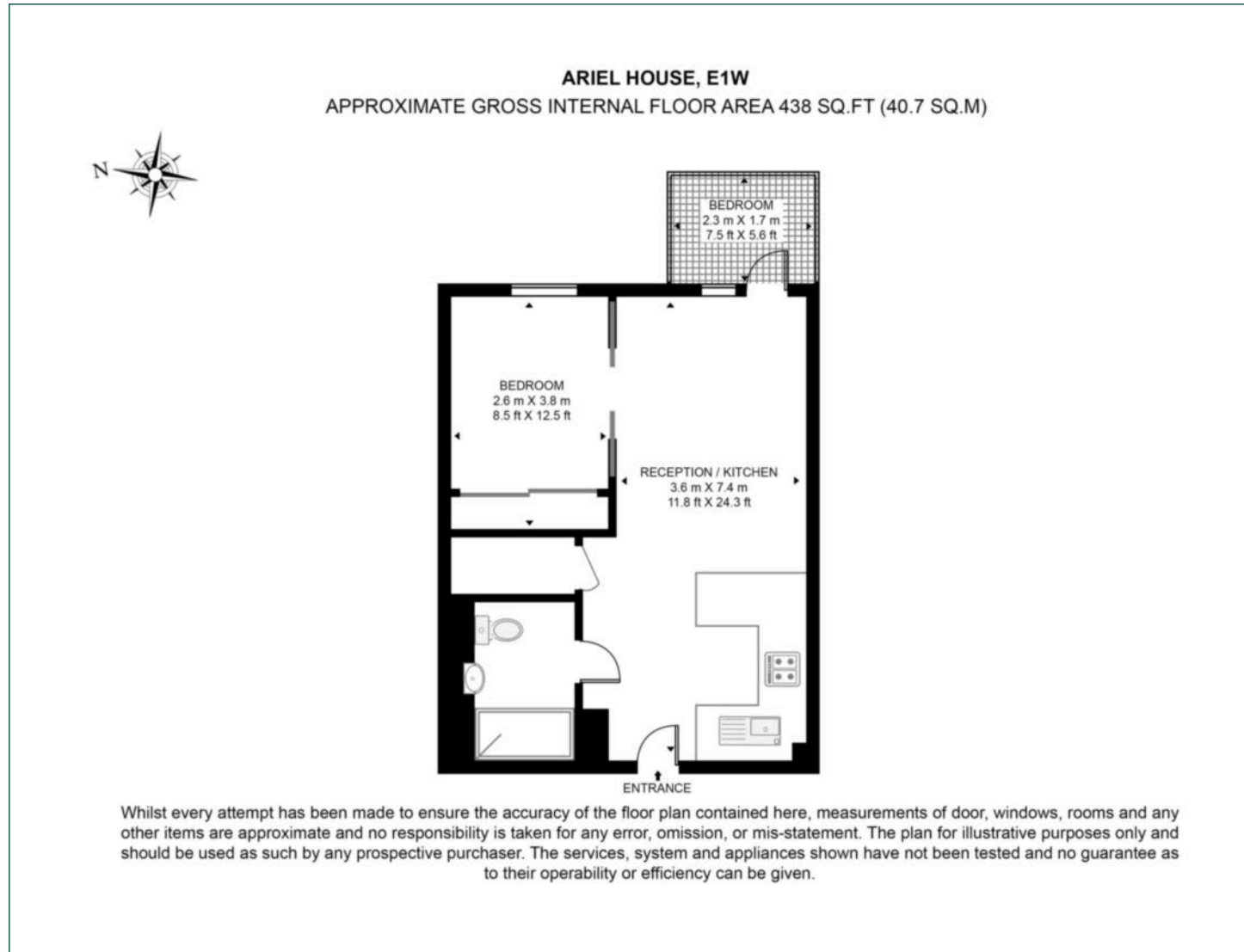
Security deposit:

equivalent to 5 weeks' rent



Floorplan

438 sq ft | 40.7 sq m



City & Aldgate

122 Whitechapel High Street, London, E1 7PT

Lettings

020 7247 3888 | city.lettings@chaseevans.co.uk

We're here to help.

IMPORTANT NOTICE - These particulars have been prepared in good faith and they are not intended to constitute part of an offer or contract. We have not performed a structural survey on this property and the services, appliances and specific fittings have not been tested. All photographs, measurements, floor plans and distances referred to are given as a guide and should not be relied upon.

[chaseevans.com](https://www.chaseevans.com)