












Cube Building, Wenlock Road, Islington, N1

Price **£750 per week** | Furnished



Cube Building, Wenlock Road, Islington, N1

-  2 Bedrooms
-  2 Bathrooms
-  1 Reception
-  Private Terrace with Canal Views
-  Concierge Service
-  Communal Gardens
-  Bike Storage
-  Close to Regents Canal Amenities
-  0.5 MI Old Street

A lovely, light two bedroom, two bathroom apartment boasting 679 sq ft of space and a large private terrace in Islington N1, located close to Regents Canal. Comprising a spacious open-plan living room/ kitchen, a sleek fully integrated kitchen, two good sized bedrooms, a family bathroom and master en suite. The property features large floor-to-ceiling-glazing, recessed lighting throughout, fitted wardrobes and a generous terrace with stunning canal views.

Residents benefit from beautiful communal gardens on the waters edge, superb concierge

services, bike storage and lift access.

Conveniently located between Angel and Shoreditch, a fabulous array of exceptional local amenities, shops, cafes and restaurants are within easy reach, whilst the popular Regent's canal is also close by, connecting Angel, Broadway Market and Victoria Park.

Transport links are within close proximity with Angel and Old Street Underground stations (Northern Line) easily accessible, whilst the City is within walking distance.

Local Authority: Hackney London

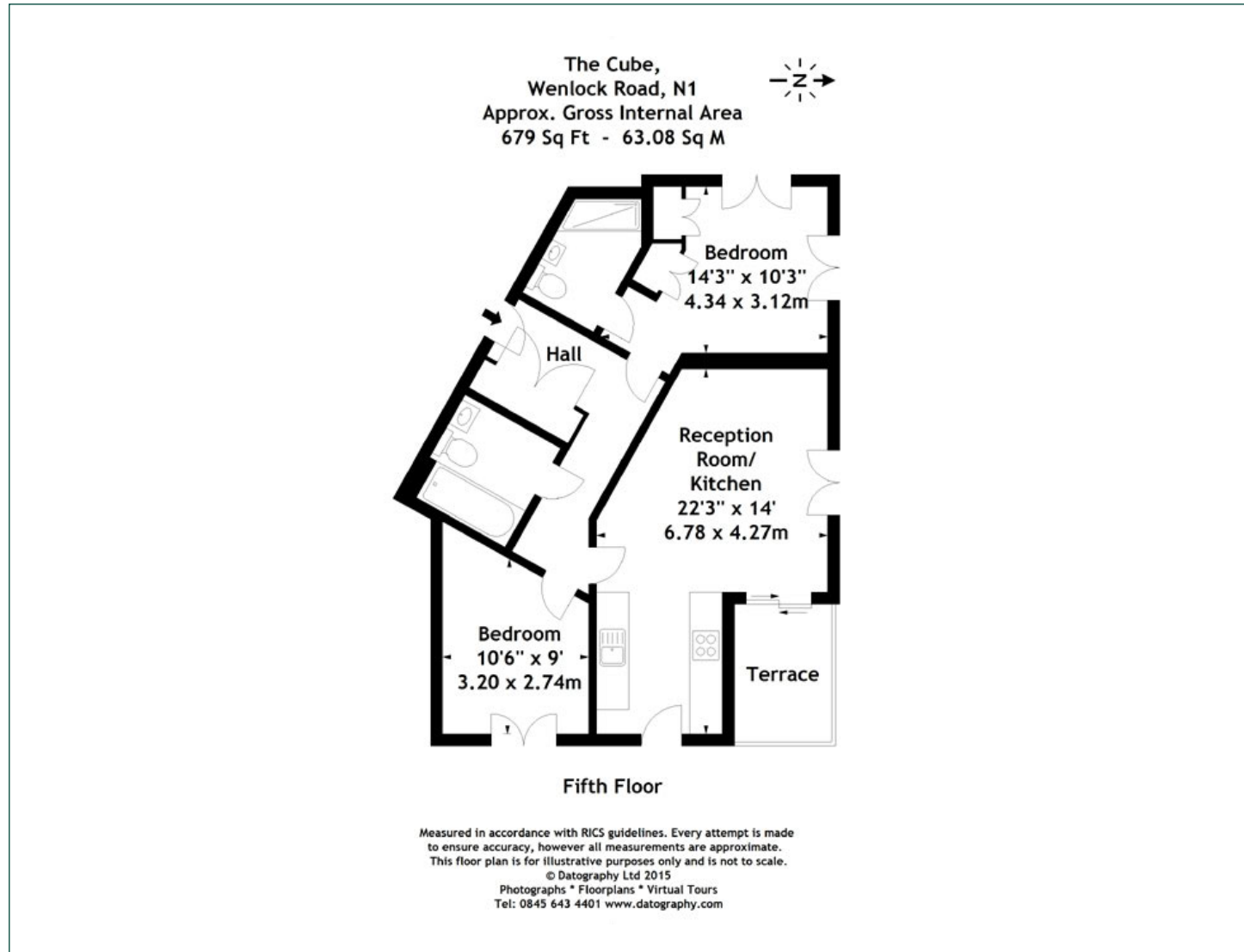
Council Tax Band: E

EPC: B

Security deposit: equivalent to 5 weeks' rent

Floorplan

679 sq ft | 63.08 sq m



City & Aldgate

122 Whitechapel High Street, London, E1 7PT

Lettings

020 7247 3888 | city.lettings@chaseevans.com

We're here to help.

IMPORTANT NOTICE - These particulars have been prepared in good faith and they are not intended to constitute part of an offer or contract. We have not performed a structural survey on this property and the services, appliances and specific fittings have not been tested. All photographs, measurements, floor plans and distances referred to are given as a guide and should not be relied upon.

chaseevans.com