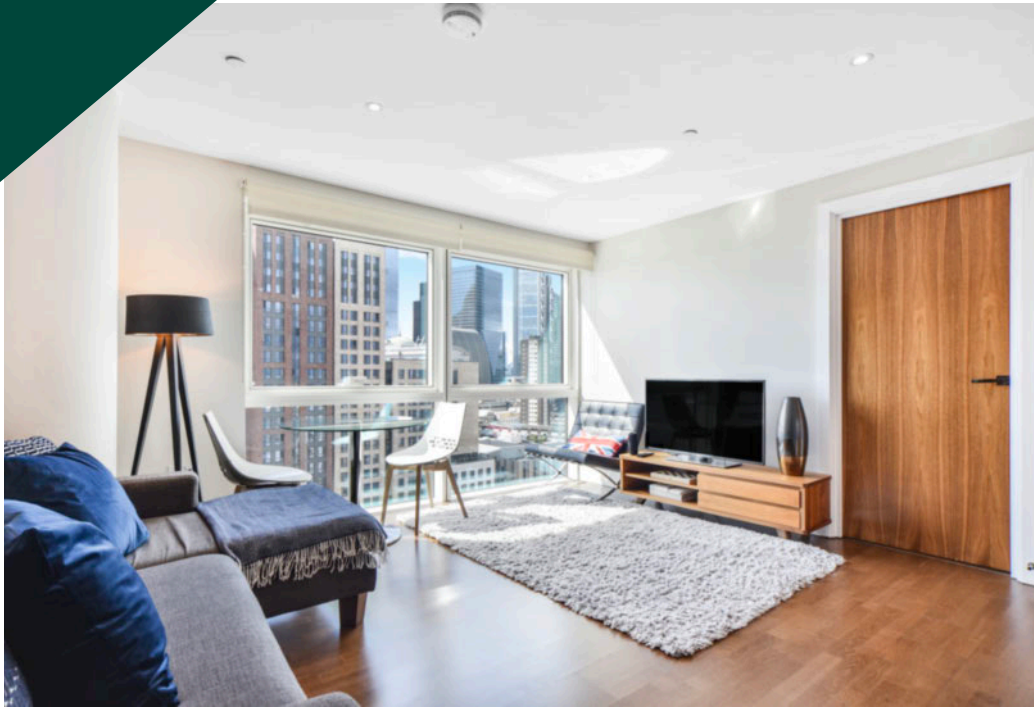








Crawford Building, One Commercial Street, Whitechapel High Street, E1

Price **£725 per week** | Furnished



Crawford Building, One Commercial Street, Whitechapel High Street, E1

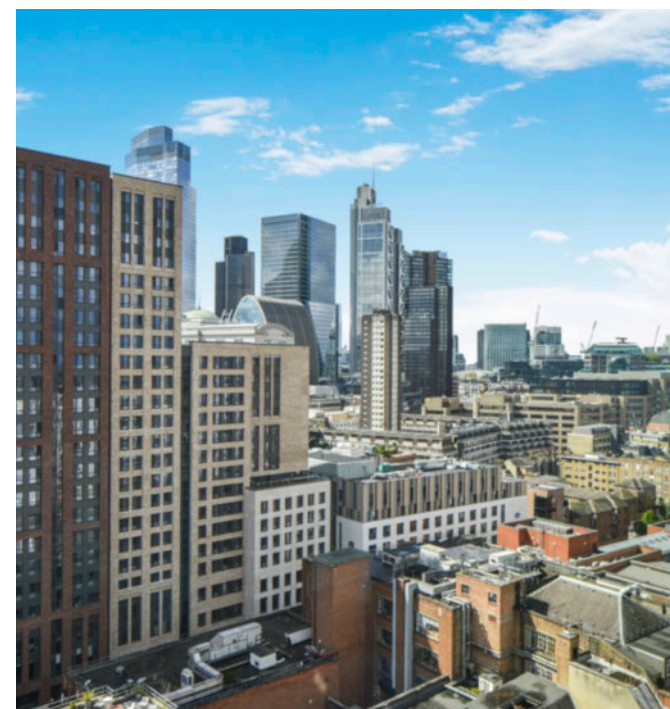
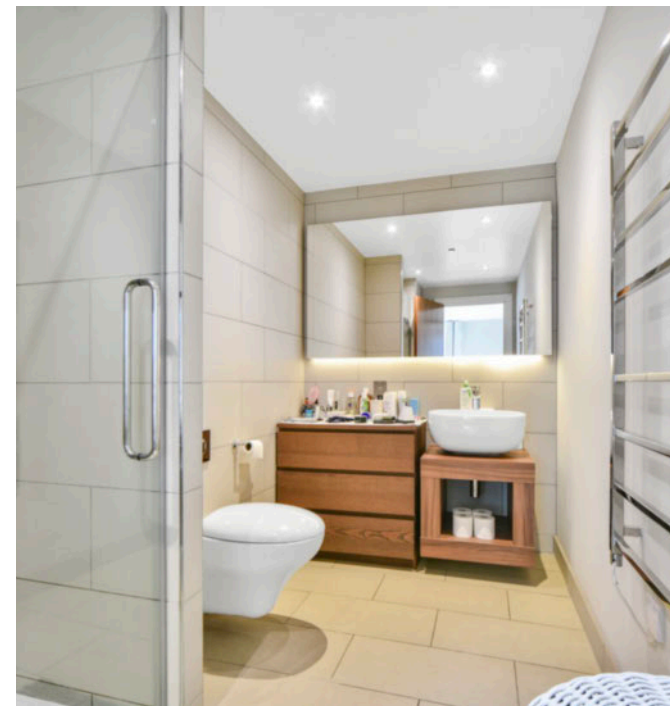
-  2 Bedrooms
-  2 Bathrooms
-  1 Reception
-  Lift Access
-  Local Amenities
-  24-Hour Concierge
-  0.1 MI Aldgate East

A modern, furnished two bedroom apartment in this striking glass clad development above Aldgate East Underground station. The open plan living comprises a fully integrated kitchen expanding onto a sizeable dining/ living room featuring large glazing and far reaching views of the City. The master bedroom has good wardrobe space and an en-suite bathroom with a shower. There is a further double bedroom and a full size bathroom.

Residents will also have access to on-site lifts and a 24-hour concierge service. There are several amenities located nearby including restaurants,

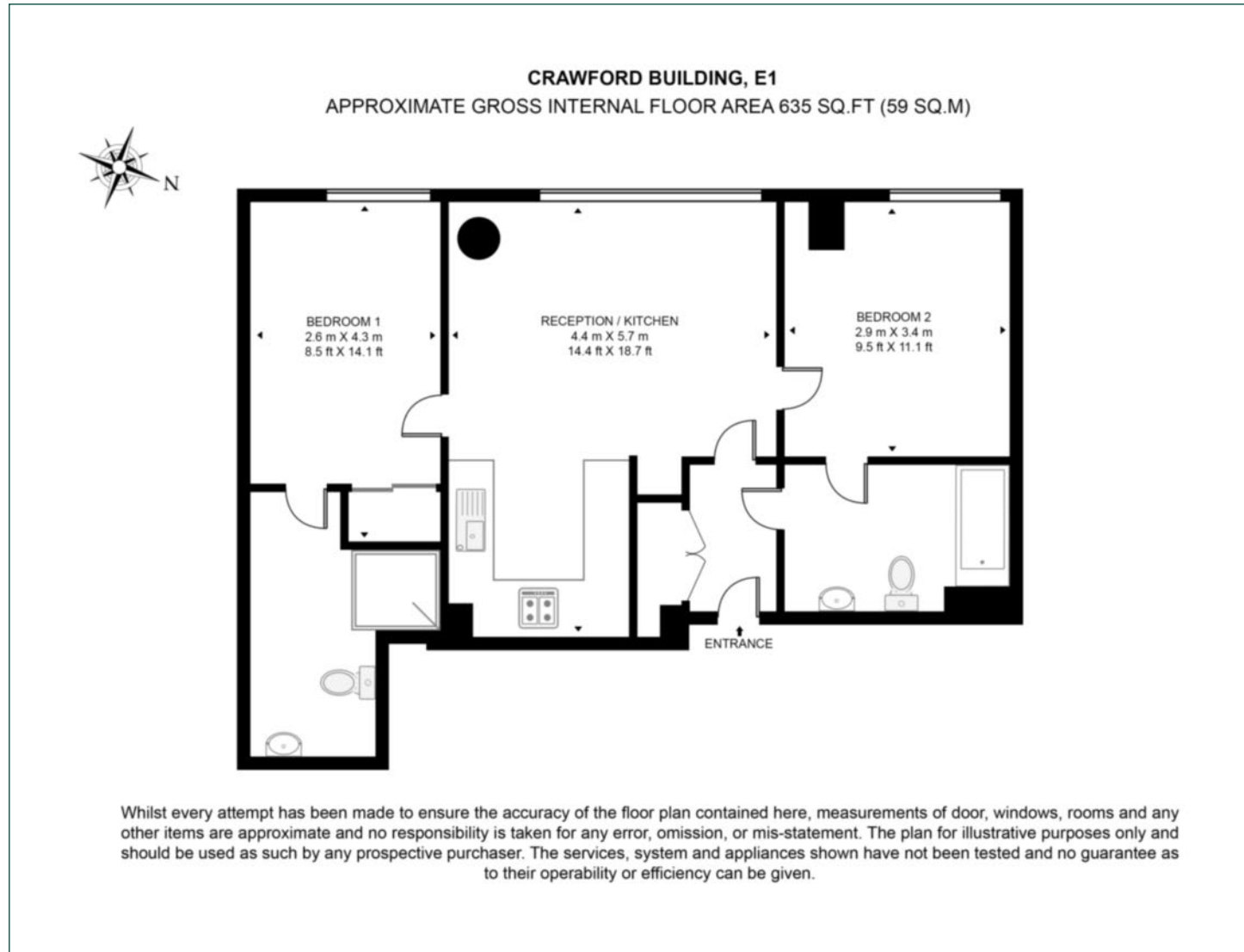
bars, cafés, restaurants and cultural attractions such as the Whitechapel Gallery. The development is conveniently located above Aldgate East Underground station, providing a transport link for commutes across the City and towards the West End.

Local Authority:	Tower Hamlets
Council Tax Band:	E
EPC:	B
Security deposit:	equivalent to 5 weeks' rent



Floorplan

635 sq ft | 59 sq m



City & Aldgate

122 Whitechapel High Street, London, E1 7PT

Lettings

020 7247 3888 | city.lettings@chaseevans.com

We're here to help.

IMPORTANT NOTICE - These particulars have been prepared in good faith and they are not intended to constitute part of an offer or contract. We have not performed a structural survey on this property and the services, appliances and specific fittings have not been tested. All photographs, measurements, floor plans and distances referred to are given as a guide and should not be relied upon.

[chaseevans.com](https://www.chaseevans.com)