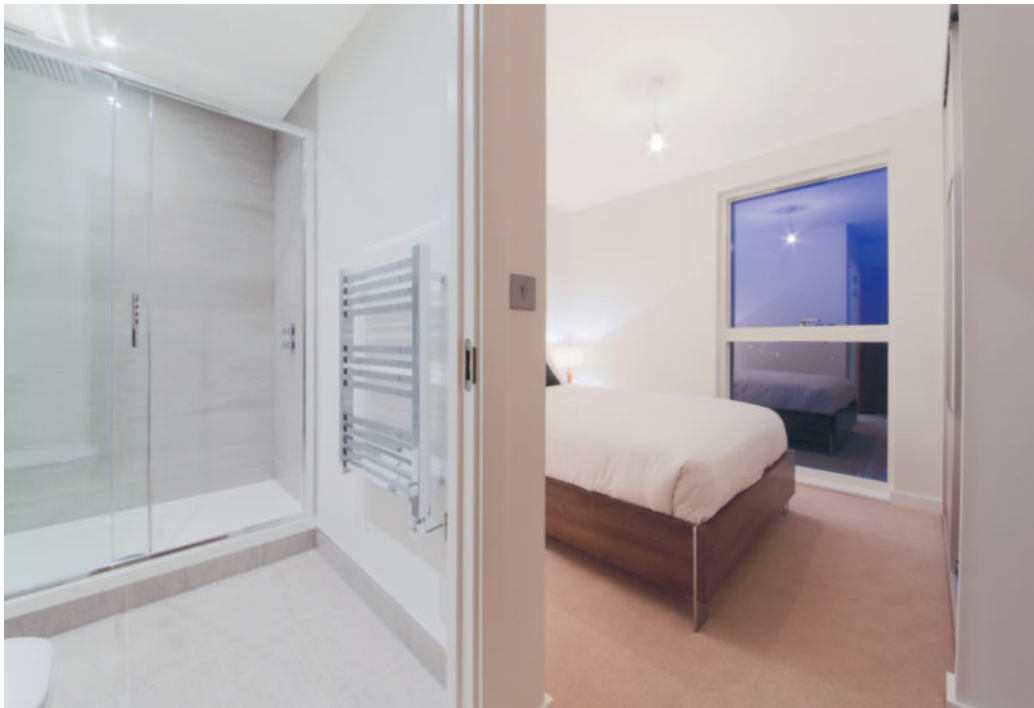




## Reverence House, Colindale Gardens, Lismore Boulevard, NW9

Price **£500 per week** | Furnished



# Reverence House, Colindale Gardens, Lismore Boulevard, NW9



2 Bedrooms



2 Bathrooms



1 Reception



Balcony



Gymnasium



Local Amenities



24-Hour Concierge



0.4 MI Colindale

A two bedroom apartment within the impressive Colindale Gardens development. The property includes an inviting living space with Siemens integrated kitchen appliances, underfloor heating, engineered timber flooring, video door entry, modern bathroom suite and a private balcony.

Residents also have access to a gymnasium and a concierge service. Situated within one of the largest regeneration zones in North London, Colindale, which boasts transport links that can see commutes to Euston achieved in 20min and Bank in 30mins via northern line services from Colindale

Underground Station just over half a mile away.

Local amenities include convenience shopping or superstores, at Brent Cross just 4mins tube ride away or even the West End within 30mins. Additionally, public green spaces like Brent Reservoir, home to a nature reserve, are just a short drive (or 40min walk) away.



**Local Authority:**

Barnet London

**Council Tax Band:**

D

**EPC:**

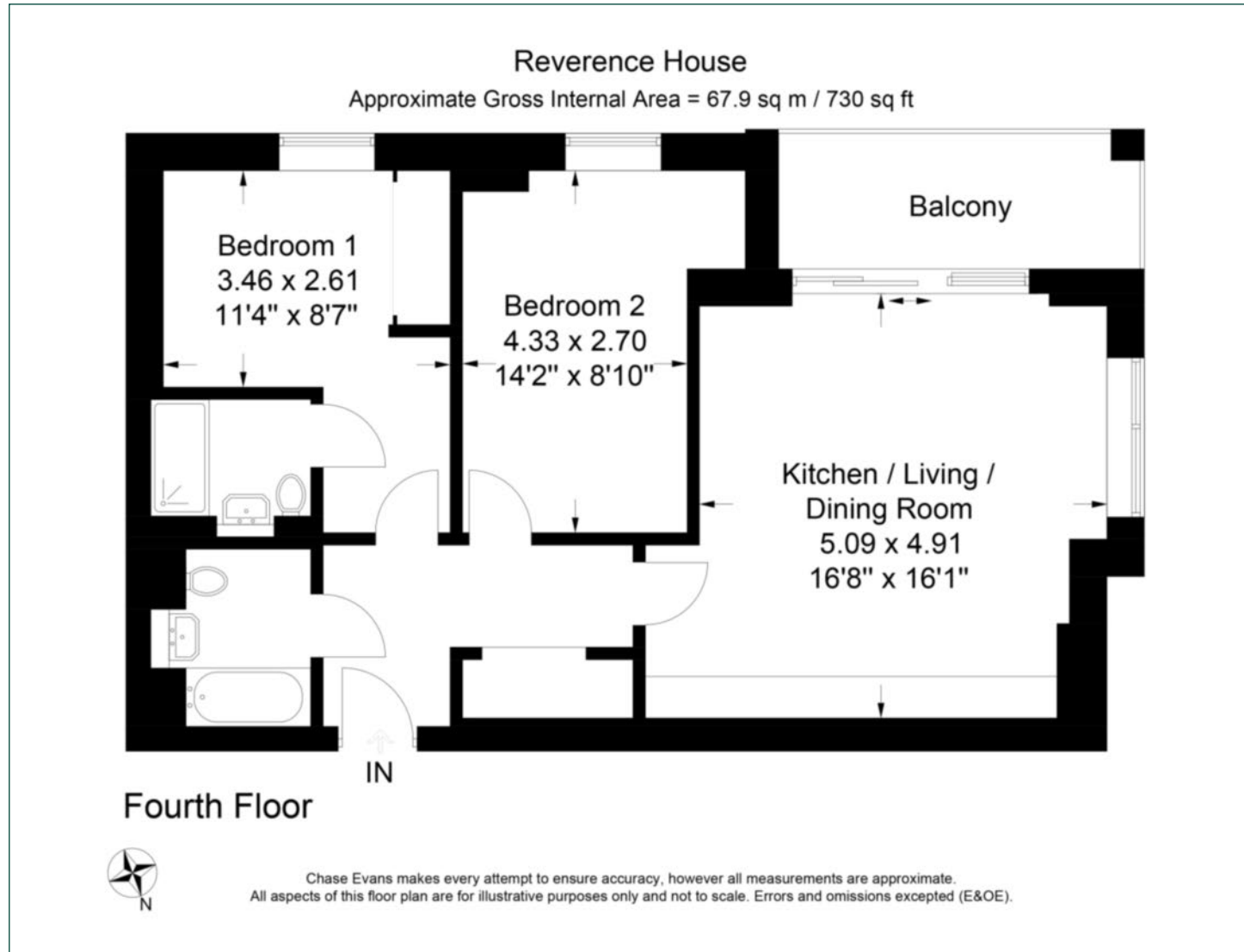
B

**Security deposit:**

equivalent to 5 weeks' rent

# Floorplan

730 sq ft | 67.9 sq m



## City & Aldgate

122 Whitechapel High Street, London, E1 7PT

## Lettings

020 7247 3888 | [city.lettings@chaseevans.com](mailto:city.lettings@chaseevans.com)

## We're here to help.

IMPORTANT NOTICE - These particulars have been prepared in good faith and they are not intended to constitute part of an offer or contract. We have not performed a structural survey on this property and the services, appliances and specific fittings have not been tested. All photographs, measurements, floor plans and distances referred to are given as a guide and should not be relied upon.

[chaseevans.com](https://www.chaseevans.com)

 Chase Evans