












Georgette Apartments, The Silk District, Sidney Street, Whitechapel, E1

OIEO **£500,000** | Leasehold



Georgette Apartments, The Silk District, Sidney Street, Whitechapel, E1

-  1 Bedroom
-  1 Bathroom
-  1 Reception
-  Balcony
-  24-Hour Concierge
-  Gymnasium
-  Communal Roof Terrace
-  Screening Room
-  0.3 MI Whitechapel

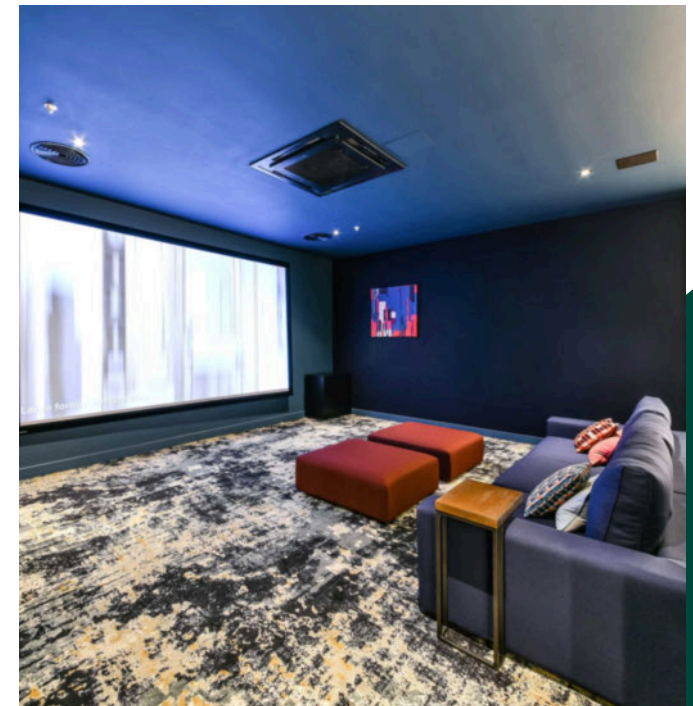
Bright one bedroom apartment set in The Georgette Apartments, one of three buildings forming The Silk District development in Whitechapel E1, a short walk from the City of London. This property comprises a spacious open-plan living area, high-spec integrated kitchen, private balcony, sizeable master bedroom with fitted wardrobes, a pristine bathroom suite and ample storage space throughout.

The development provides 24-hour concierge services, access to an onsite gym, screening room, flexible workspace and a roof terrace. The nearest

station is Whitechapel, served by District, Hammersmith & City line, London Overground and the Elizabeth line, which is moments away from the property.

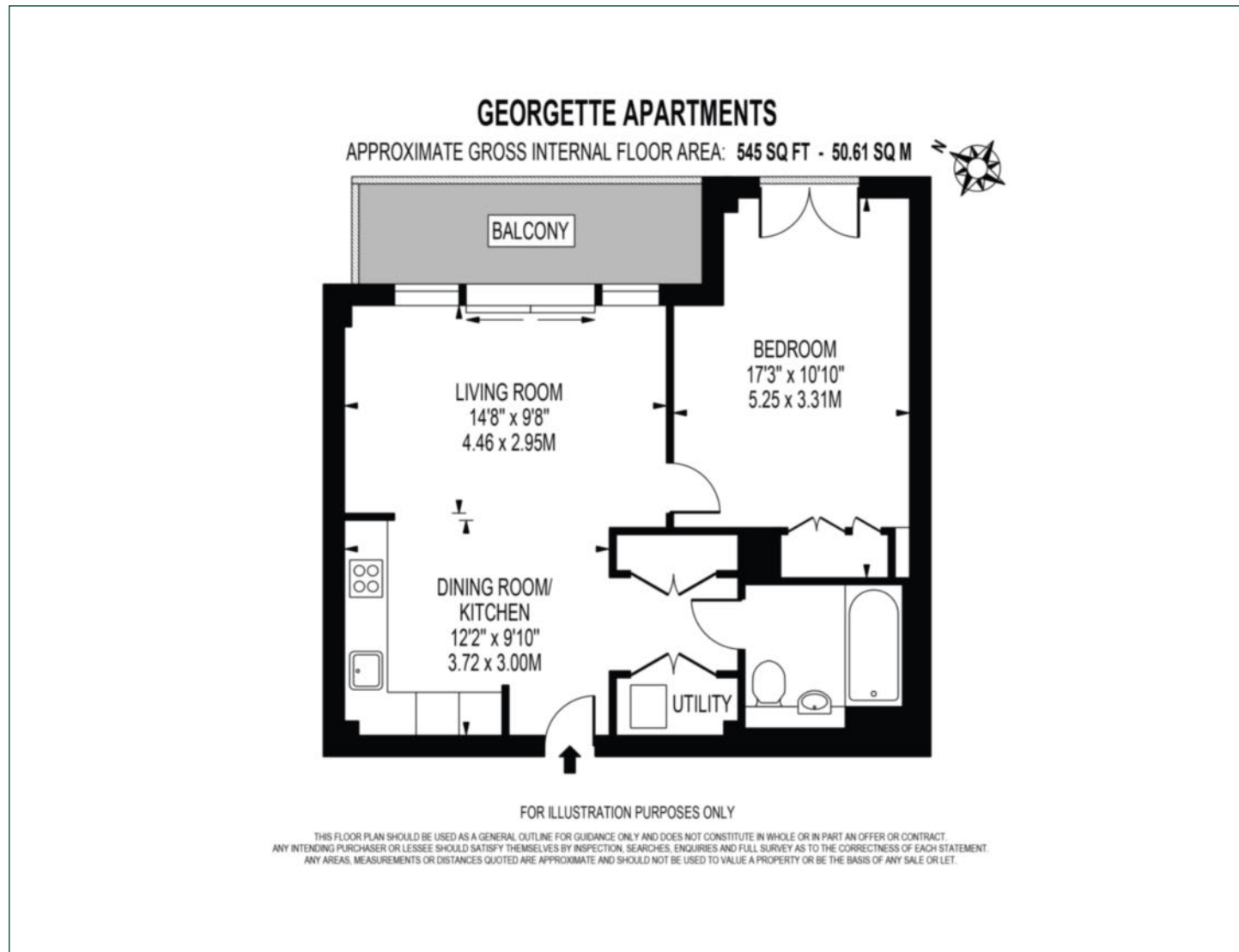
The development neighbours the vibrant Shoreditch, Brick Lane, Aldgate and Bethnal Green, providing a great range of amenities and attractions.

Tenure:	Leasehold (994 years remaining)	Local Authority:	Tower Hamlets
Ground Rent:	£400 p.a.	Council Tax Band:	E
Service Charge:	Approx. £2,918 p.a.	EPC:	B



Floorplan

545 sq ft | 50.61 sq m



City & Aldgate

122 Whitechapel High Street, London, E1 7PT

Sales

020 7488 2777 | city.sales@chaseevans.com

We're here to help.

IMPORTANT NOTICE - These particulars have been prepared in good faith and they are not intended to constitute part of an offer or contract. We have not performed a structural survey on this property and the services, appliances and specific fittings have not been tested. All photographs, measurements, floor plans and distances referred to are given as a guide and should not be relied upon.

chaseevans.com