











Pegswood Court, Cable Street, Shadwell, E1

OIEO **£375,000** | Leasehold



Pegswood Court, Cable Street, Shadwell, E1

-  3 Bedrooms
-  1 Bathroom
-  1 Reception
-  Lift and Secure Entrance
-  Close to Parks
-  Close to The Thames
-  0.3 Shadwell Station
-  0.8 MI Whitechapel Station

This spacious duplex property with three bedrooms occupies two top floors of a residential building with a secure entrance and lift, conveniently placed for excellent amenities of Shadwell, Tower Hill, Aldgate and Whitechapel.

The flexible accommodation is accessed through a hallway opening onto a separate kitchen, living room and a storeroom on level one. A flight of stairs up are three bedrooms, a bathroom (currently with a shower) and a separate WC. The principal rooms are all south-facing and feature good storage/cupboard space, laminate or tile flooring and double glazing.

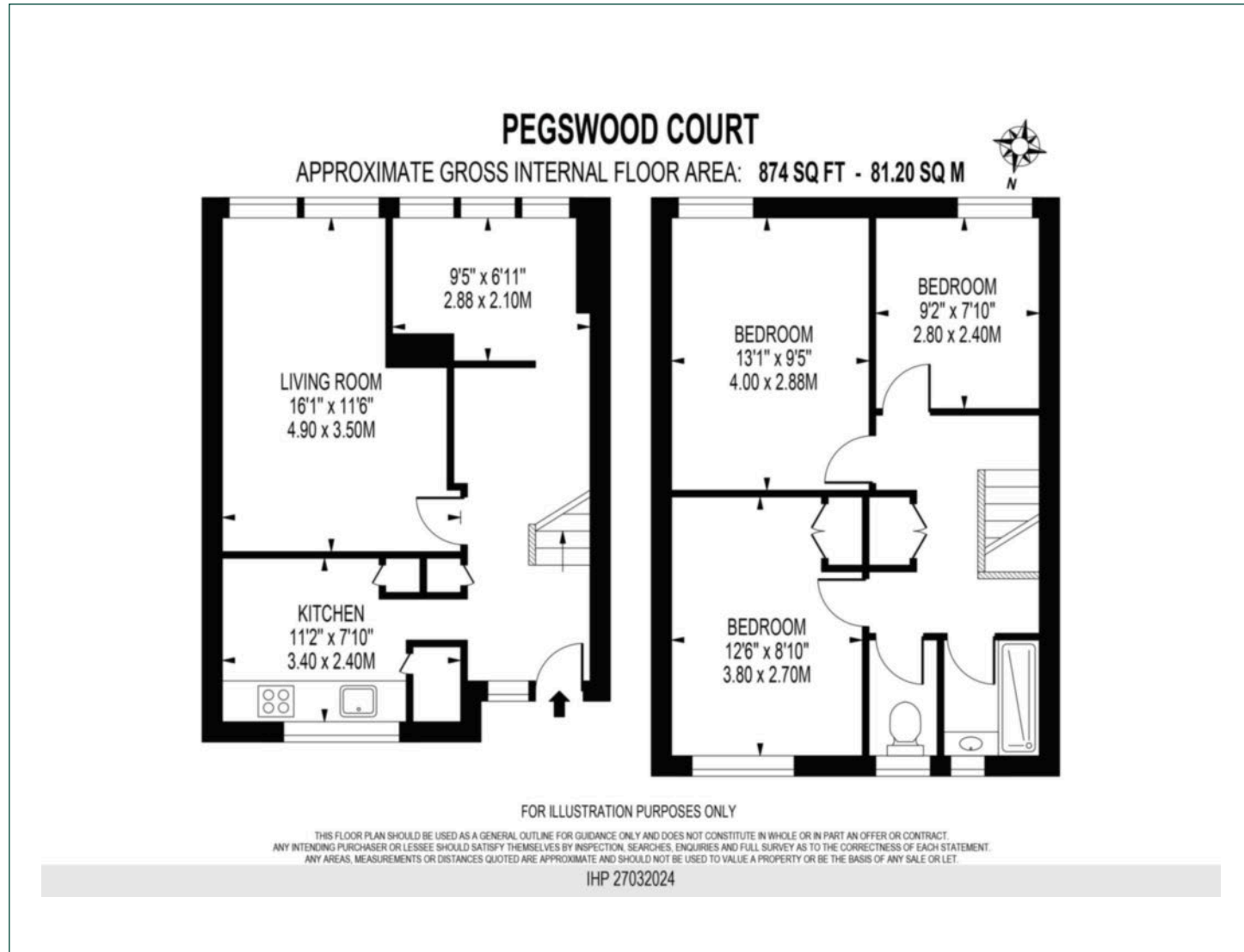
Pegswood Court is located a short distance from both, Shadwell Overground (0.3 miles) and Tower Gateway DLR (0.4 miles) stations. The neighbourhood is linked to several gardens including St George's Gardens, Swedenborg Gardens, and Wapping Woods. Shadwell Basin and The Thames are a stroll away. There are many historic landmarks nearby including the Wilton's Music Hall, Battle of Cable Street mural and Jack the Ripper Museum. The area has benefited from recent contemporary developments at London Dock and Tobacco Dock, which is now an exhibition centre. Aldgate East (District, Hammersmith & City) is the nearest underground station, 0.6 miles away. The Elizabeth Line is available from Whitechapel Station (0.8 miles).

Tenure:	Leasehold (90 years remaining)	Local Authority:	Tower Hamlets
Ground Rent:	£10 p.a.	Council Tax Band:	C
Service Charge:	Approx. £2,147.08 p.a.	EPC:	D



Floorplan

874 sq ft | 81.20 sq m



City & Aldgate

122 Whitechapel High Street, London, E1 7PT

Sales

020 7488 2777 | city.sales@chaseevans.com

We're here to help.

IMPORTANT NOTICE - These particulars have been prepared in good faith and they are not intended to constitute part of an offer or contract. We have not performed a structural survey on this property and the services, appliances and specific fittings have not been tested. All photographs, measurements, floor plans and distances referred to are given as a guide and should not be relied upon.

chaseevans.com