



## Lattice House, Alie Street, Aldgate, E1

OIEO **£650,000** | Leasehold





# Lattice House, Alie Street, Aldgate, E1



2 Bedrooms



1 Bathroom



1 Reception



Balcony



Secure Cycle Storage



Lift Access



Local Amenities



0.2 MI Aldgate East

Spacious two bedroom, one bathroom apartment with a large balcony set within a modern development located in Aldgate. Accommodation spans 728 sq ft and includes an bright open plan living room, fitted sleek kitchen with integrated appliances, floor to ceiling glazing, wood flooring, high ceilings, good sized bedrooms with both access to the balcony, built in wardrobe to second bedroom and a 3-piece tiled bathroom suite with shower fittings.

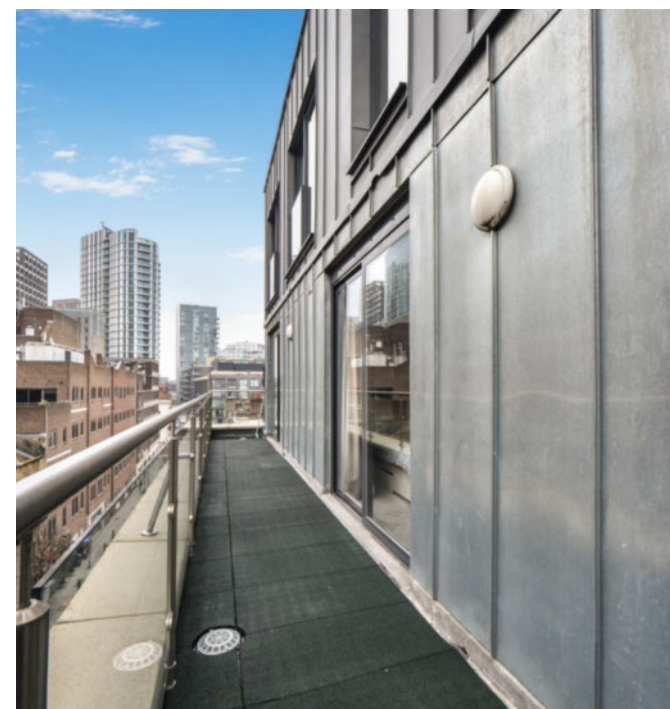
The residents enjoy access to a secure entrance and bike storage. There are several amenities located

nearby including restaurants, bars, cafés, shops and cultural attractions including the Whitechapel Gallery, Brick Lane and the Spitalfields Markets. The development is located close to several transport links including Aldgate East Underground station (6mins walk), ideal for commutes along Circle and District lines.

**Tenure:** Leasehold (987 years remaining) **Local Authority:** Tower Hamlets

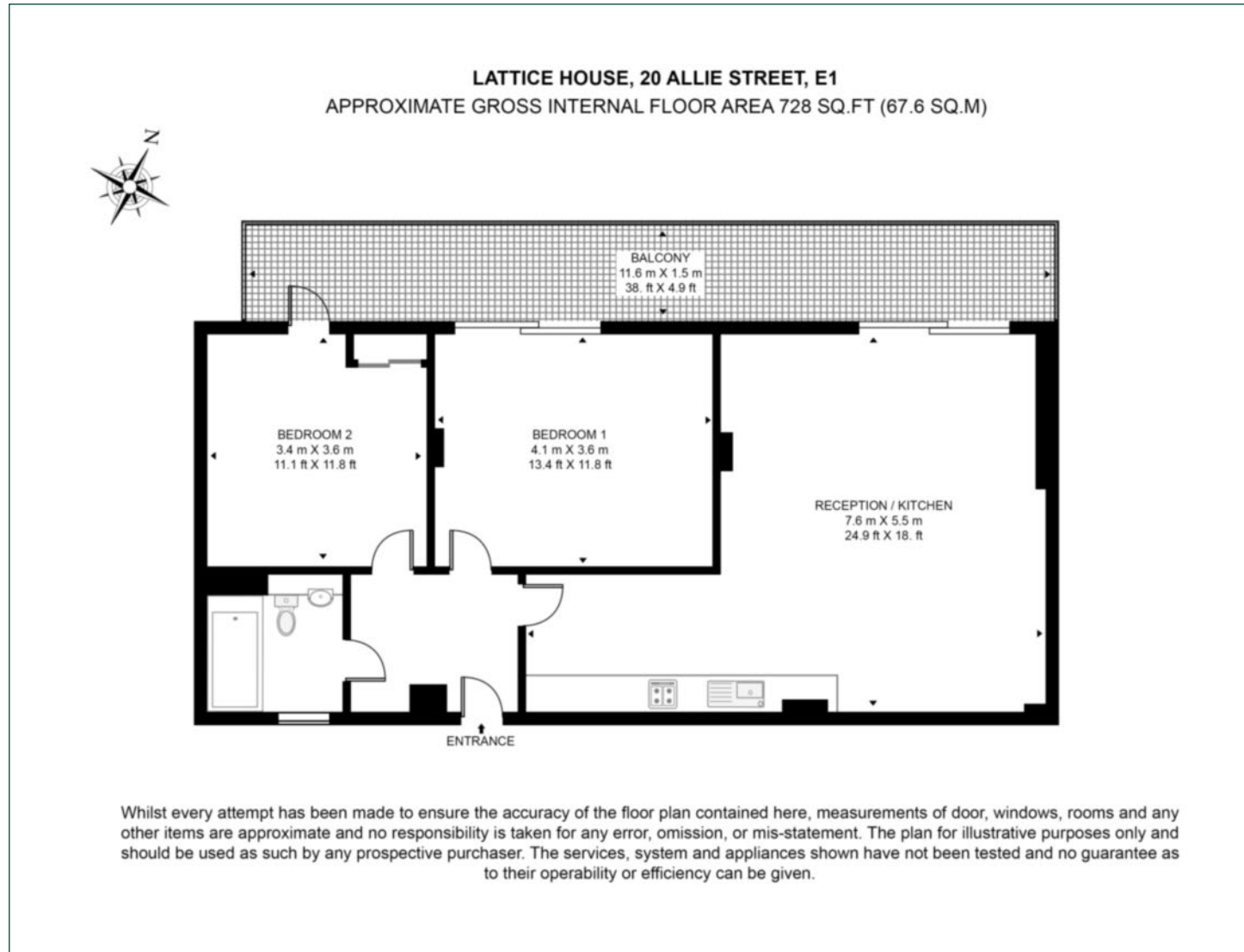
**Ground Rent:** £300 p.a. **Council Tax Band:** F

**Service Charge:** £4,112.97 p.a. **EPC:** B



# Floorplan

728 sq ft | 67.6 sq m



## City & Aldgate

122 Whitechapel High Street, London, E1 7PT

## Sales

020 7488 2777 | [city.sales@chaseevans.com](mailto:city.sales@chaseevans.com)

## We're here to help.

IMPORTANT NOTICE - These particulars have been prepared in good faith and they are not intended to constitute part of an offer or contract. We have not performed a structural survey on this property and the services, appliances and specific fittings have not been tested. All photographs, measurements, floor plans and distances referred to are given as a guide and should not be relied upon.

[chaseevans.com](https://chaseevans.com)