



## Waterlow Court, Queensland Road, Islington, N7

Asking price **£625,000** | Leasehold



# Waterlow Court, Queensland Road, Islington, N7



2 Bedrooms



2 Bathrooms



1 Reception



Secure Underground Parking



Gymnasium



Local Amenities



24-Hour Concierge



0.2 MI Drayton Park

A contemporary two bedroom, two bathroom south-west facing property with parking set in the Queensland terrace development in the borough of Islington and adjacent to the Emirates Stadium.

The apartment benefits from a generous bright and airy open plan living room, fully integrated modern kitchen with appliances, high ceilings, wood flooring, two maple sized bedrooms, master bedroom with fitted storage and en suite, family tiled bathroom. Secure underground parking.

Queensland Terrace offers residents fantastic

facilities including 24-hour concierge service, a fitness suite, and private residents' garden. The development also offers a great location with Islington's popular bars and restaurants on the doorstep and a variety of transport links including Holloway Road tube station and Drayton Park overground station just minutes away.



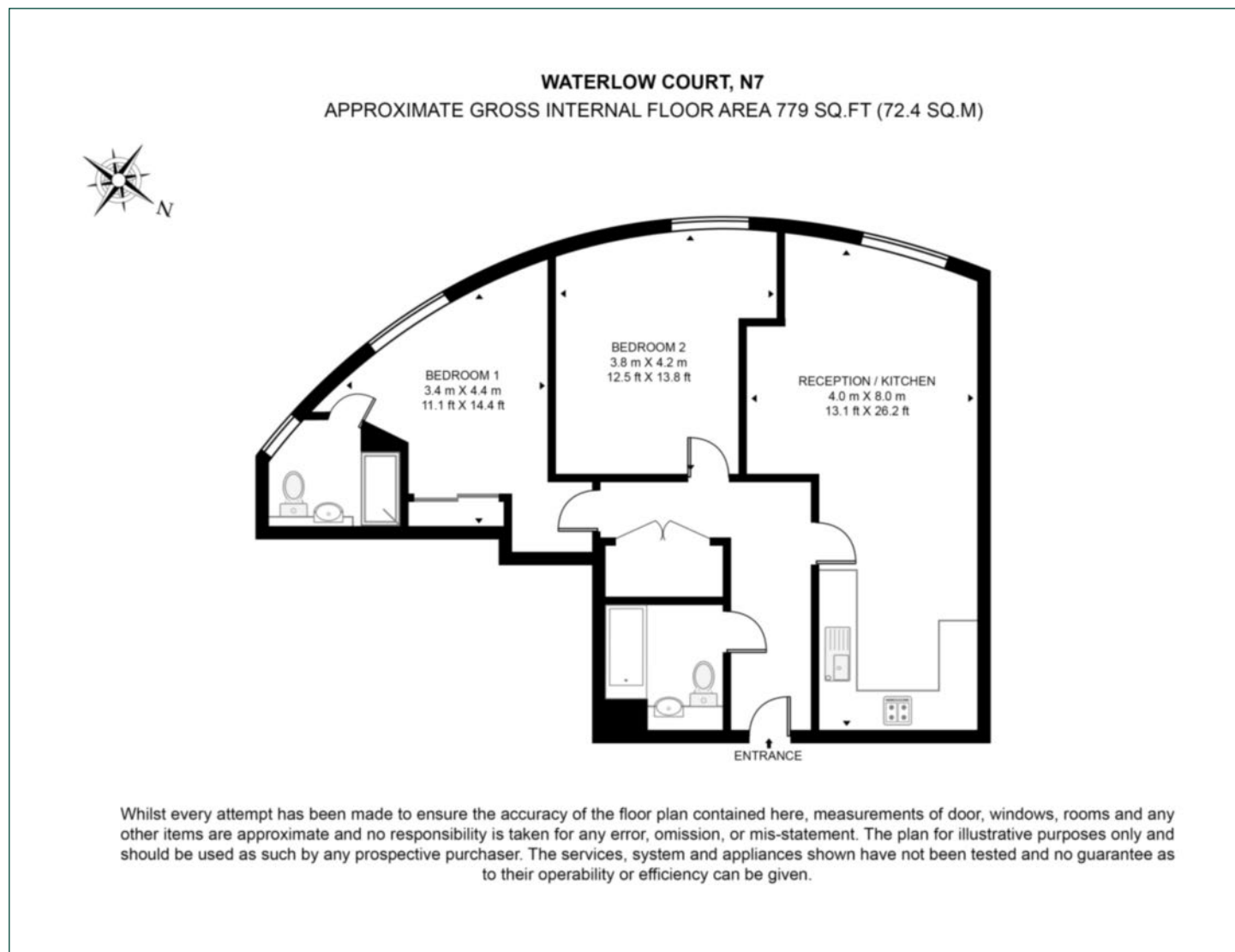
**Tenure:** Leasehold (989 years remaining) **Local Authority:** Islington London

**Ground Rent:** £600.48 p.a. **Council Tax Band:** E

**Service Charge:** £3,768.08 p.a. **EPC:** B

# Floorplan

779 sq ft | 72.4 sq m



## City & Aldgate

122 Whitechapel High Street, London, E1 7PT

## Sales

020 7488 2777 | [city.sales@chaseevans.com](mailto:city.sales@chaseevans.com)

## We're here to help.

IMPORTANT NOTICE - These particulars have been prepared in good faith and they are not intended to constitute part of an offer or contract. We have not performed a structural survey on this property and the services, appliances and specific fittings have not been tested. All photographs, measurements, floor plans and distances referred to are given as a guide and should not be relied upon.

[chaseevans.com](https://www.chaseevans.com)

 Chase Evans