



Principal Place, Shoreditch, EC2A

Asking price **£820,000** | Leasehold



Principal Place, Shoreditch, EC2A



1 Bedroom



1 Bathroom



1 Reception



Balcony



24 - Hour Concierge



Gym



Screening Room



Swimming Pool



0.4 MI Liverpool Street

This is a luxury, well-presented one bedroom property with a balcony in the Foster+ Partners designed Principal Place development, a stone's throw from the City, Liverpool Street Station and the vibrant Shoreditch tech quarters. Set on the ninth floor, the south-east-west facing living quarters extend onto a private balcony affording wide views over the City. The accommodation is open plan, flooded with natural light and comprises a bespoke kitchen with a breakfast island and an elegant living/entertainment room opening onto the balcony. The sizeable bedroom is wonderfully light with excellent, bespoke wardrobe space, and there is a large and modern bathroom with high-spec ware and fittings. The property has exceptional interior features providing

high functionality and comfort. There are full height windows, comfort cooling and heating, timber veneered kitchen cabinetry, timber flooring to the living area and porcelain and stone floor tiling in the kitchen and bathroom. Residents have access to a 24-hour concierge, a gym and swimming pool, a screening room, a business suite and lounge.

Located on the border of the City and Shoreditch, Principal Tower has four major London stations within a 0.6 mile radius: Old Street, Liverpool Street (Elizabeth Line), Aldgate and Aldgate East. Shoreditch is a sought-after central London district with a fantastic range of amenities.

Tenure: Leasehold (976 remaining)

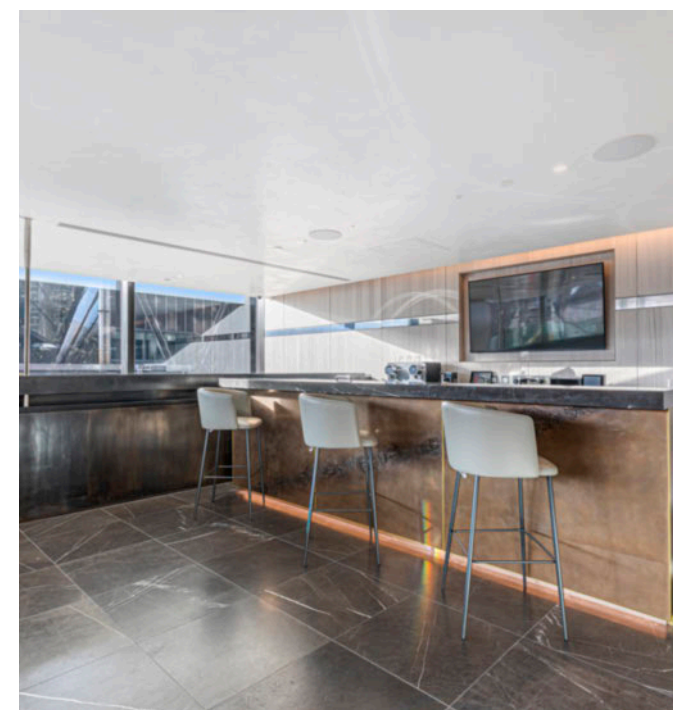
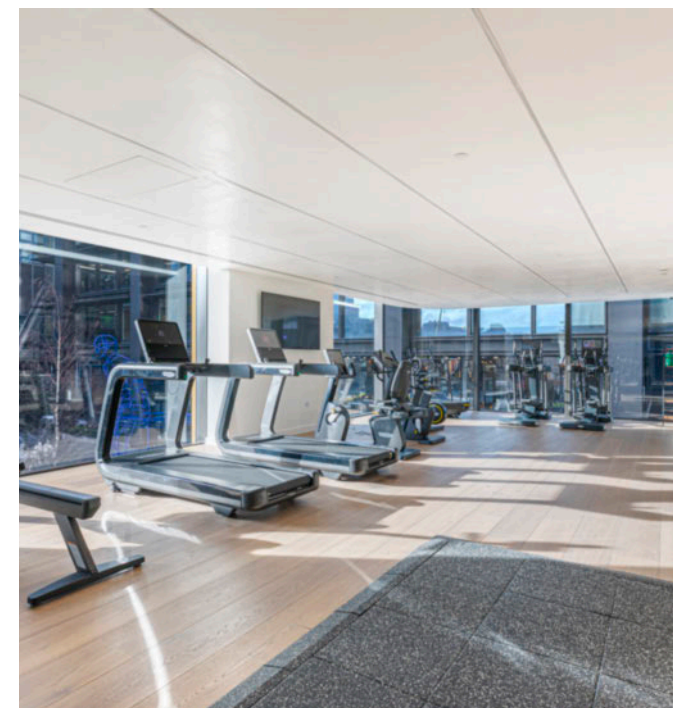
Local Authority: Hackney

Ground Rent: £550 p.a.

Council Tax Band: E

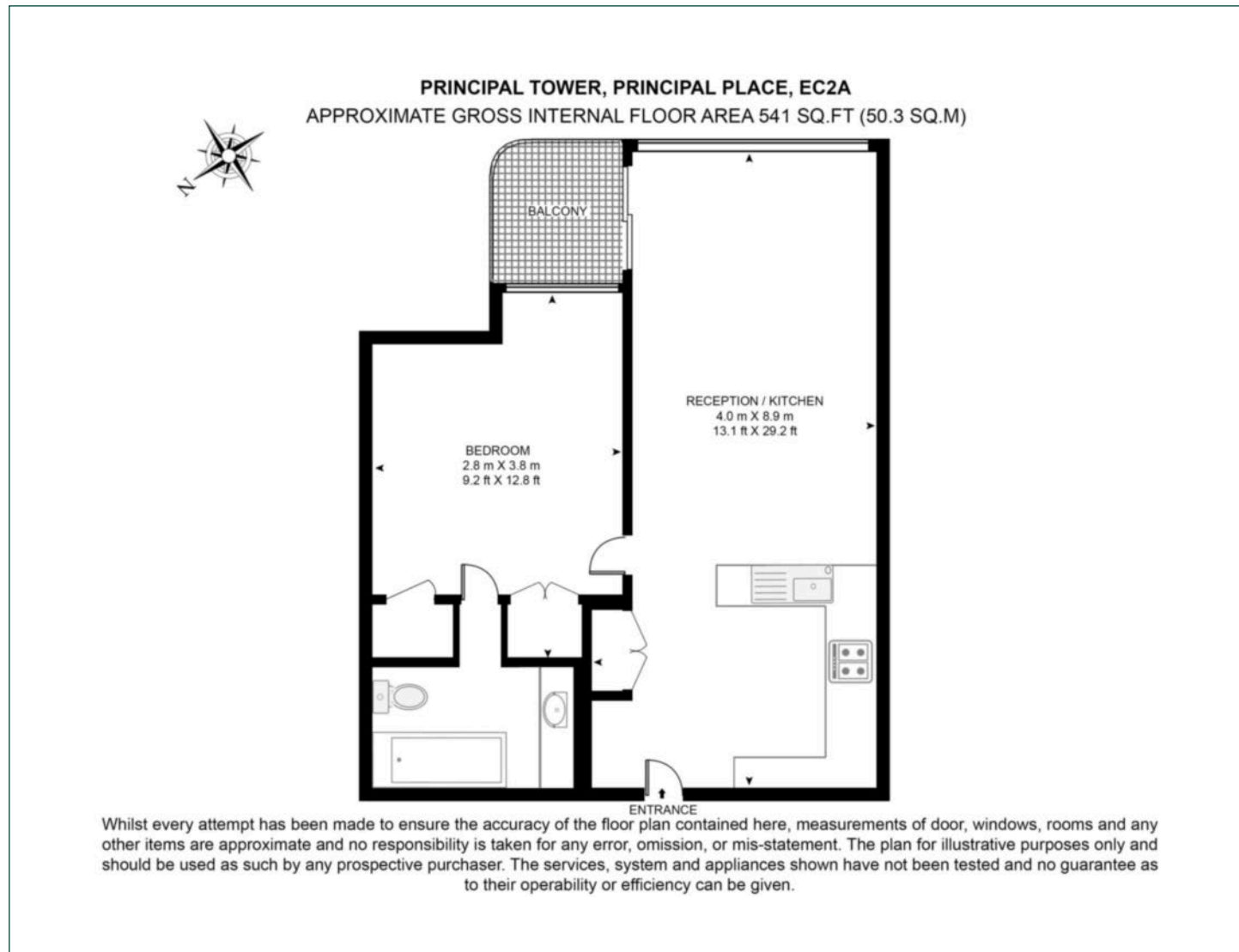
Service Charge: £6,518.80 p.a.

EPC: B



Floorplan

541 sq ft | 50.3 sq m



City and Aldgate

122 Whitechapel High Street, London, E1 7PT

Sales

020 7488 2777 | city.sales@chaseevans.com

We're here to help.

IMPORTANT NOTICE - These particulars have been prepared in good faith and they are not intended to constitute part of an offer or contract. We have not performed a structural survey on this property and the services, appliances and specific fittings have not been tested. All photographs, measurements, floor plans and distances referred to are given as a guide and should not be relied upon.

[chaseevans.com](https://www.chaseevans.com)