



## Temple House, Strand, Arundel Street, Temple, WC2R

Price **£1,400 per week** | Furnished



# Temple House, Strand, Arundel Street, Temple, WC2R



2 Bedrooms



2 Bathrooms



1 Reception



Gymnasium



Local Amenities



24-Hour Concierge

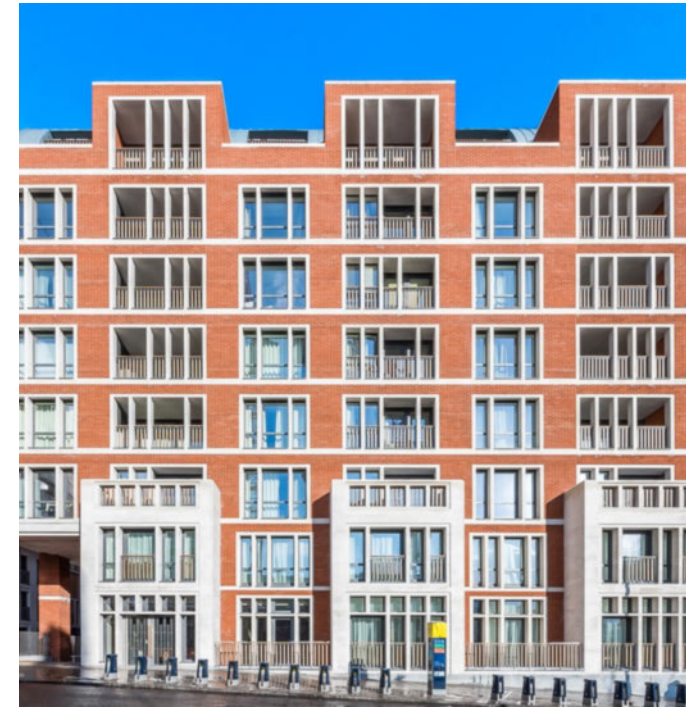


65 Metres  
Embankment

A two bedroom, two bathroom apartment in 190 Strand's Temple House, a highly sought-after modern development close to Temple Underground station and only a short walk away from both Covent Garden and the City of London. The beautifully furnished apartment includes a spacious open plan kitchen/living and dining area, two bedrooms (master ensuite) and modern bathroom.

Residents have access to a 24-hour concierge service, business and conference facilities, gymnasium, swimming pool, and a private cinema.

There are several amenities located nearby including restaurants, bars, cafés pubs and cultural attractions such as The Shaftesbury Theatre and Somerset House. The development is located near several transport links including Temple Underground station and Embankment Station, ideal for commutes to key destinations across the Capital.



**Local Authority:**

City of Westminster London

**Council Tax Band:**

H

**EPC:**

C

**Security deposit:**

equivalent to 5 weeks' rent

# Floorplan

893 sq ft | 83 sq m



## City & Aldgate

122 Whitechapel High Street, London, E1 7PT

## Lettings

020 7247 3888 | [city.lettings@chaseevans.co.uk](mailto:city.lettings@chaseevans.co.uk)

## We're here to help.

IMPORTANT NOTICE - These particulars have been prepared in good faith and they are not intended to constitute part of an offer or contract. We have not performed a structural survey on this property and the services, appliances and specific fittings have not been tested. All photographs, measurements, floor plans and distances referred to are given as a guide and should not be relied upon.

[chaseevans.com](http://chaseevans.com)