



Crawford Building, Whitechapel High Street, Aldgate, E1

OIEO **£780,000** | Leasehold



Crawford Building, Whitechapel High Street, Aldgate, E1



2 Bedrooms



2 Bathrooms



1 Reception



Prime Location



24-Hour Concierge



Local Amenities

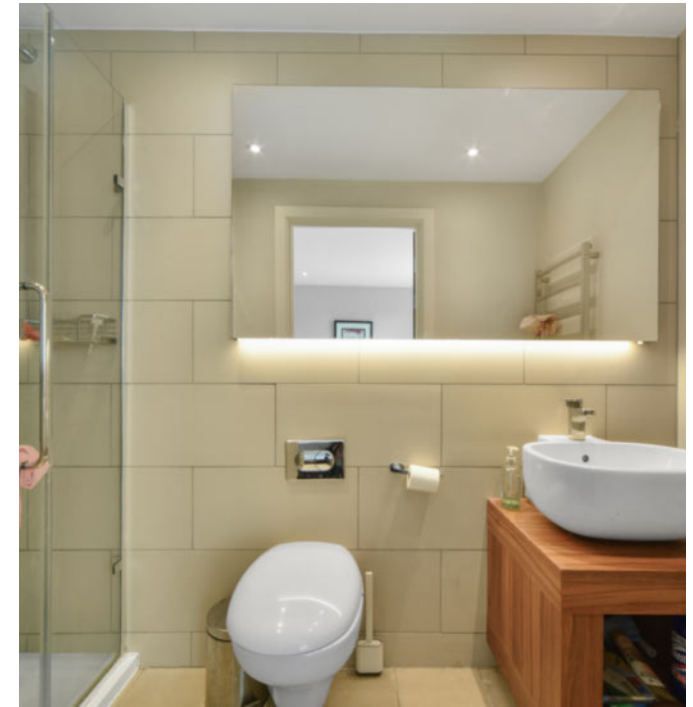


0.1 MI Aldgate East

A modern, two bedroom, two bathroom property situated within this fantastic development offering stunning views across the City. This luxury apartment features high specification throughout and offers a fully fitted contemporary kitchen, floor to ceiling windows, generous bedrooms, master with fitted wardrobe and en-suite.

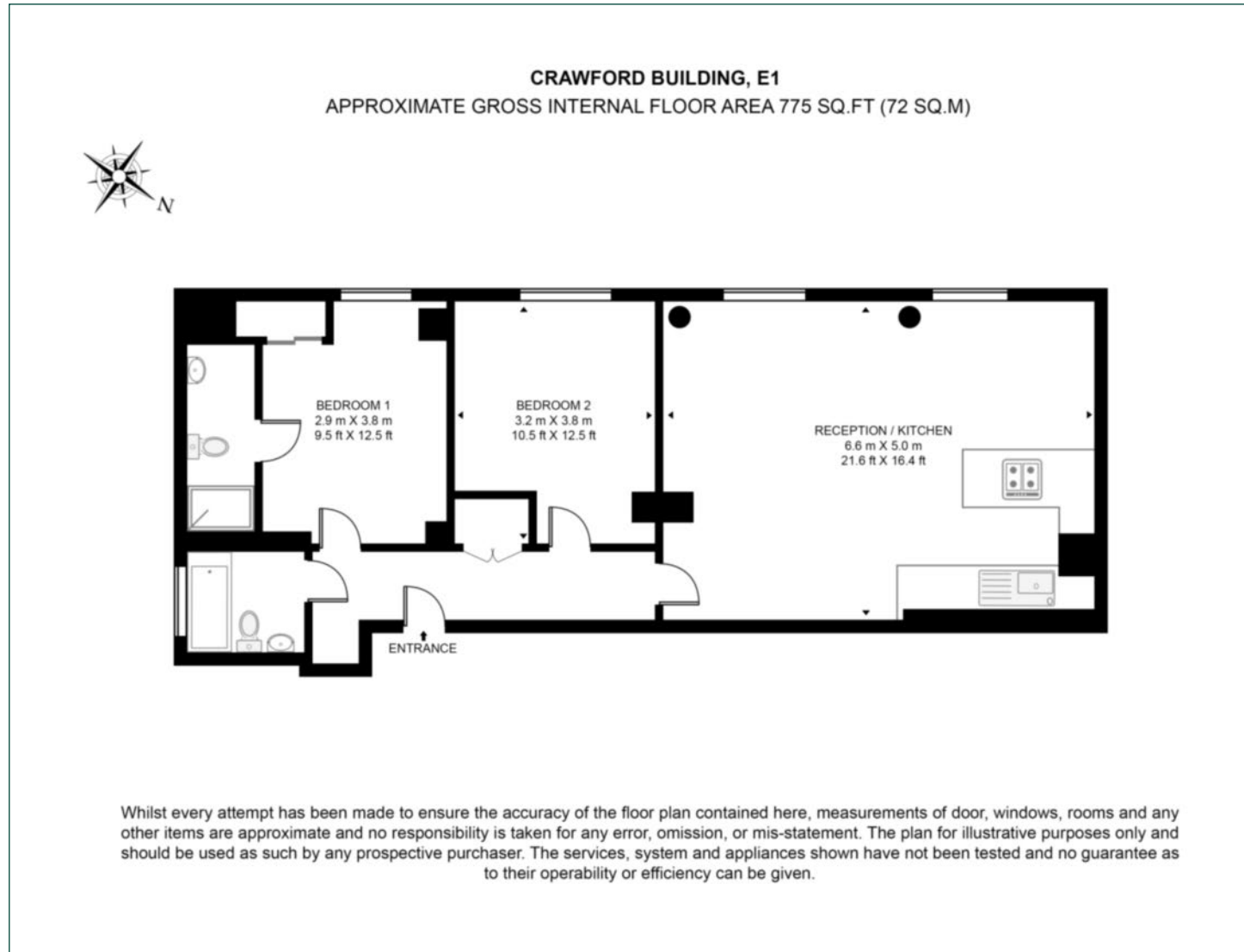
Residents have access to 24-hour concierge service. The development has been ideally built above Aldgate East tube station and is situated on the edge of the City of London, within walking distance of Shoreditch and Tower Hill.

Tenure:	Leasehold (123 years remaining)	Local Authority:	City and County of the City of London
Ground Rent:	£400 p.a.	Council Tax Band:	G
Service Charge:	£3,672.52 p.a.	EPC:	B



Floorplan

775 sq ft | 72 sq m



City & Aldgate

122 Whitechapel High Street, London, E1 7PT

Sales

020 7488 2777 | city.sales@chaseevans.com

We're here to help.

IMPORTANT NOTICE - These particulars have been prepared in good faith and they are not intended to constitute part of an offer or contract. We have not performed a structural survey on this property and the services, appliances and specific fittings have not been tested. All photographs, measurements, floor plans and distances referred to are given as a guide and should not be relied upon.

[chaseevans.com](https://www.chaseevans.com)