



Chi Building, The Hawksmoors, Crowder Street, Tower Hill, E1

OIEO **£600,000** | Leasehold



Chi Building, The Hawksmoors, Crowder Street, Tower Hill, E1



3 Bedrooms



2 Bathrooms



1 Reception



Balcony



Lift Access



Local Amenities



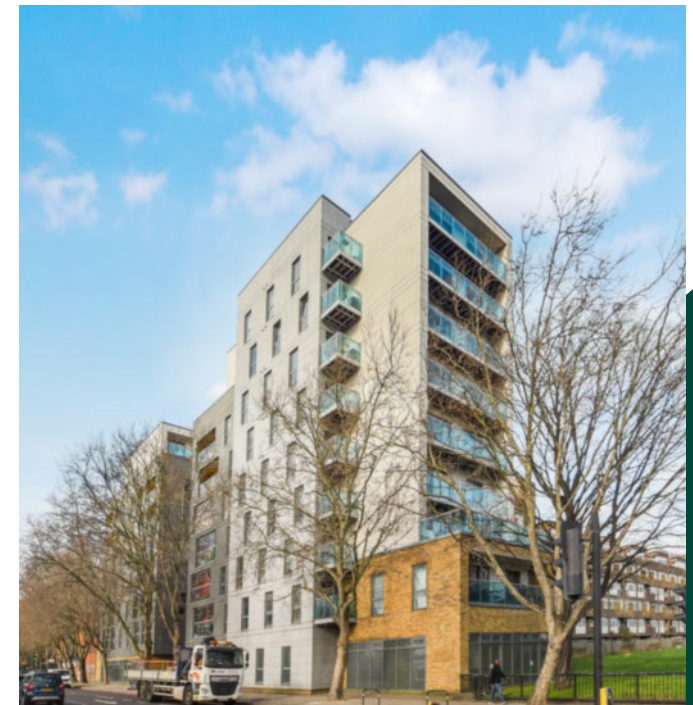
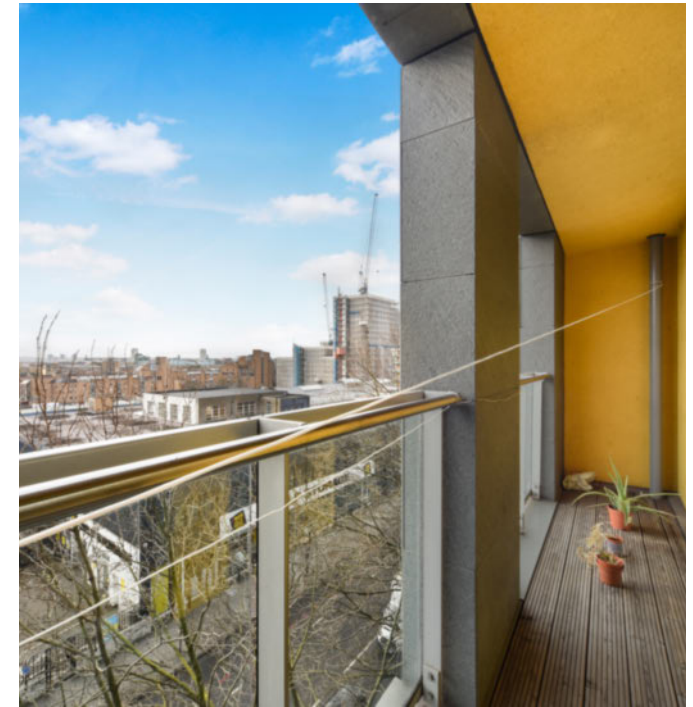
0.2 MI Shadwell

Modern three bedroom, two bathroom property set in this secure development. The apartment offers laminate wood flooring throughout the living room and an open plan, fully fitted kitchen with gas oven. Access to private balcony, secure entry and lift access.

The Hawksmoors comes from Telford Homes, a name that stands for a unique blend of visionary architectural flair, cutting-edge style and a calibre of development. Close to transport routes to Canary Wharf and the City with tube and DLR stations. The Thames Clipper at nearby St Katharine's Pier for fast

and frequent travel across London. Over at St Katharine Docks you will find an ultra chic marina in an historic setting, with a raft of places to wine and dine and a backdrop of stylish yachts on the harbourside.

Tenure:	Leasehold (238 years remaining)	Local Authority:	Tower Hamlets
Ground Rent:	£300 p.a.	Council Tax Band:	E
Service Charge:	£2,337.18 p.a.	EPC:	B

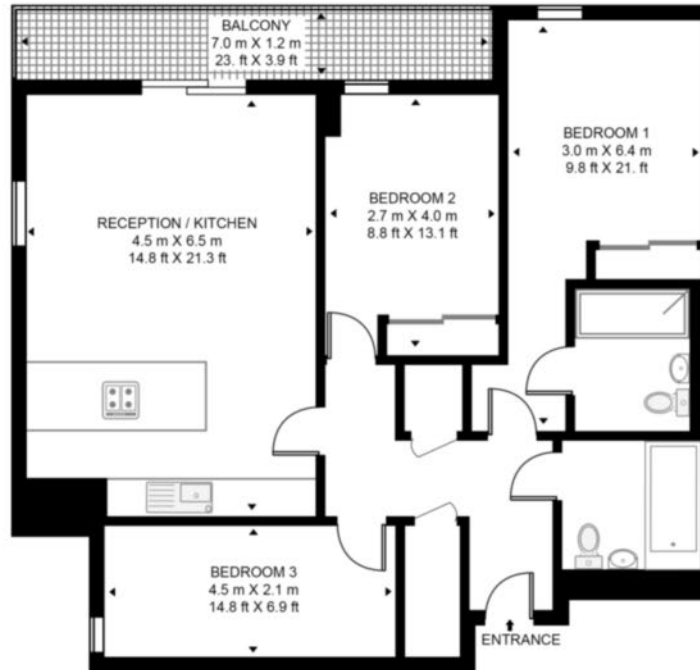


Floorplan

933 sq ft | 86.7 sq m



CHI BUILDING, 54 CROWDER STREET, E1
APPROXIMATE GROSS INTERNAL FLOOR AREA 933 SQ.FT (86.7 SQ.M)



Whilst every attempt has been made to ensure the accuracy of the floor plan contained here, measurements of door, windows, rooms and any other items are approximate and no responsibility is taken for any error, omission, or mis-statement. The plan for illustrative purposes only and should be used as such by any prospective purchaser. The services, system and appliances shown have not been tested and no guarantee as to their operability or efficiency can be given.

City & Aldgate

122 Whitechapel High Street, London, E1 7PT

Sales

020 7488 2777 | city.sales@chaseevans.com

We're here to help.

IMPORTANT NOTICE - These particulars have been prepared in good faith and they are not intended to constitute part of an offer or contract. We have not performed a structural survey on this property and the services, appliances and specific fittings have not been tested. All photographs, measurements, floor plans and distances referred to are given as a guide and should not be relied upon.

chaseevans.com

 Chase Evans