



**Glebe Road, Hackney, E8**  
OIEO **£415,000** | Share of Freehold



# Glebe Road, Hackney, E8



1 Bedroom



1 Bathroom



1 Reception



Juliet Balcony



Near Stonebridge Gardens



Local Amenities

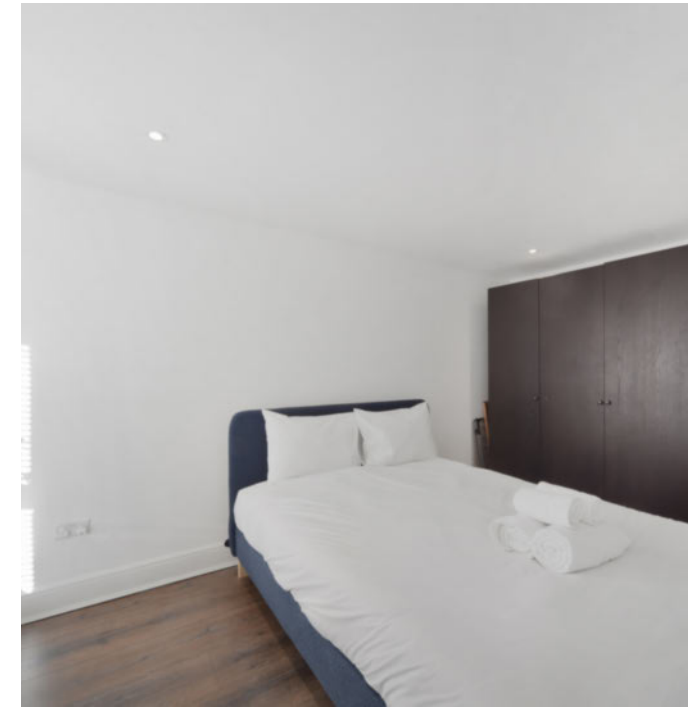


0.3 MI Haggerston

A bright and well-proportioned first floor one-bedroom property with a Juliet balcony set in a small contemporary conversion/development close to a wealth of amenities of the trendy Hackney, E8.

The open-plan living features a large wall glazing with sliding doors to the east facing Juliet balcony. The neatly arranged corner kitchen is well equipped and has stylish, reflective cabinetry. The room affords ample space for a dining table and chairs and features generous shelving, a pantry cupboard, wood floors and recessed lighting. The ample bedroom faces west and features wood floors and an ingeniously designed large window that tunnels plenty natural light in this room. The bathroom is fully tiled with a contemporary ware and fittings.

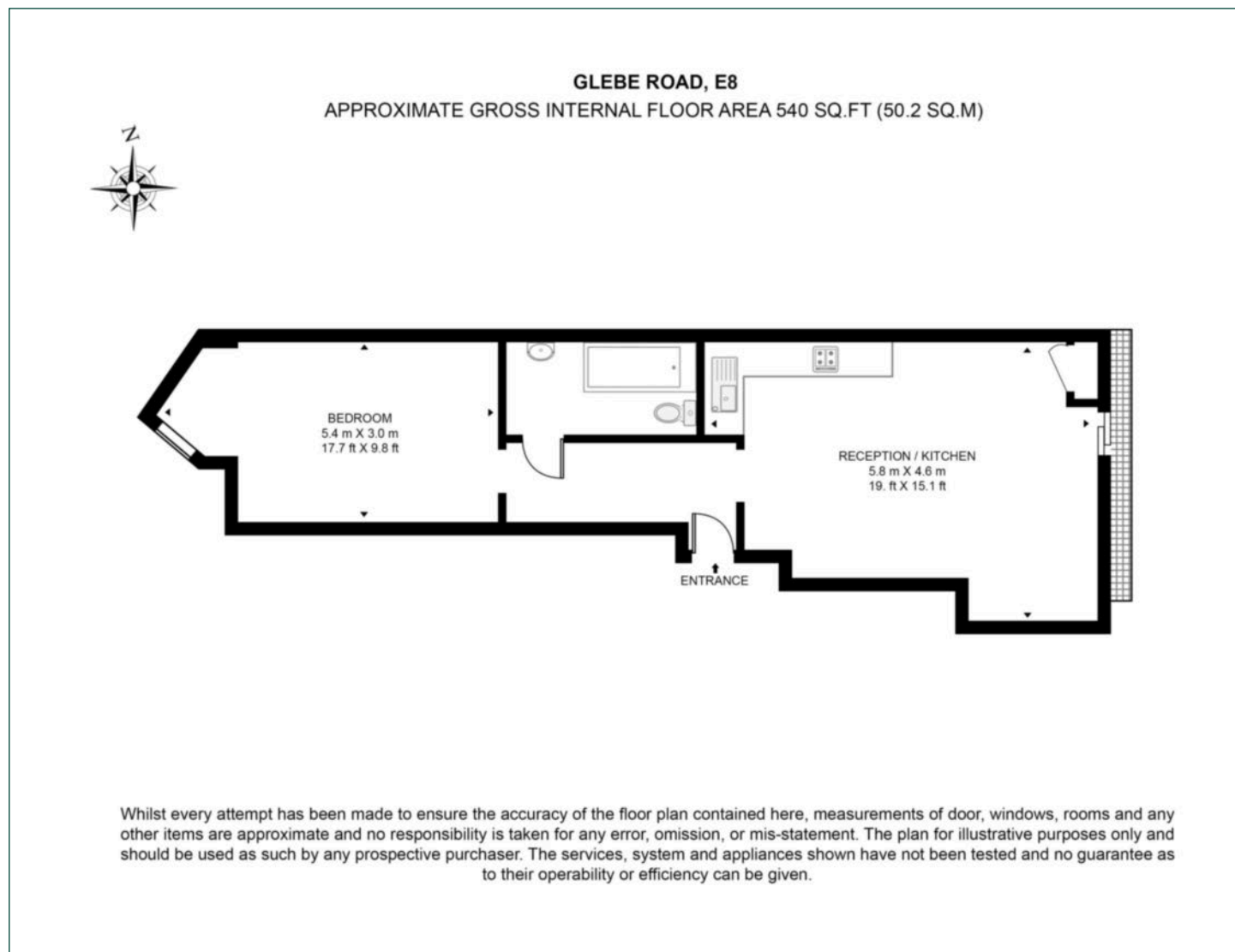
Glebe Road is a narrow, cobbled back street overlooked by low rise dwellings comprising many residential units, most of which have been recently converted from light workshop and factory buildings. With some art and print shops still in situ, the street maintains mixed character typical for Hackney. Glebe Road leads to an array of fantastic local amenities along the nearby Kingsland Road. The property is well located for Stonebridge Gardens, De Beauvoir Rose Garden, Kingsland Basing and the Regent's Canal, and to popular bars and restaurants in Dalston. Direct transport links to the City, Whitechapel and Highbury and Islington are available from Haggerston and Dalston Junction stations, both a short walk away from the property.



<b>Tenure:</b>	Share of Freehold (996 years remaining)	<b>Local Authority:</b>	Hackney
<b>Ground Rent:</b>	N/A	<b>Council Tax Band:</b>	C
<b>Service Charge:</b>	Approx. £1,349.24 p.a.	<b>EPC:</b>	C

# Floorplan

540 sq ft | 50.2 sq m



## City & Aldgate

122 Whitechapel High Street, London, E1 7PT

## Sales

020 7488 2777 | [city.sales@chaseevans.com](mailto:city.sales@chaseevans.com)

## We're here to help.

IMPORTANT NOTICE - These particulars have been prepared in good faith and they are not intended to constitute part of an offer or contract. We have not performed a structural survey on this property and the services, appliances and specific fittings have not been tested. All photographs, measurements, floor plans and distances referred to are given as a guide and should not be relied upon.

[chaseevans.com](https://www.chaseevans.com)