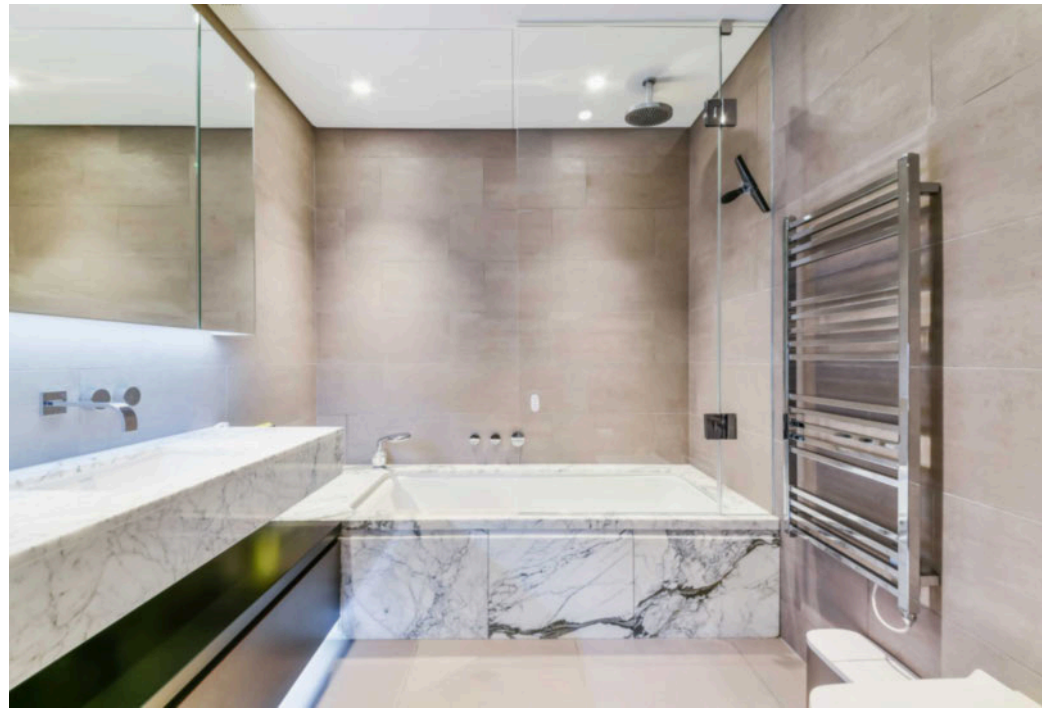
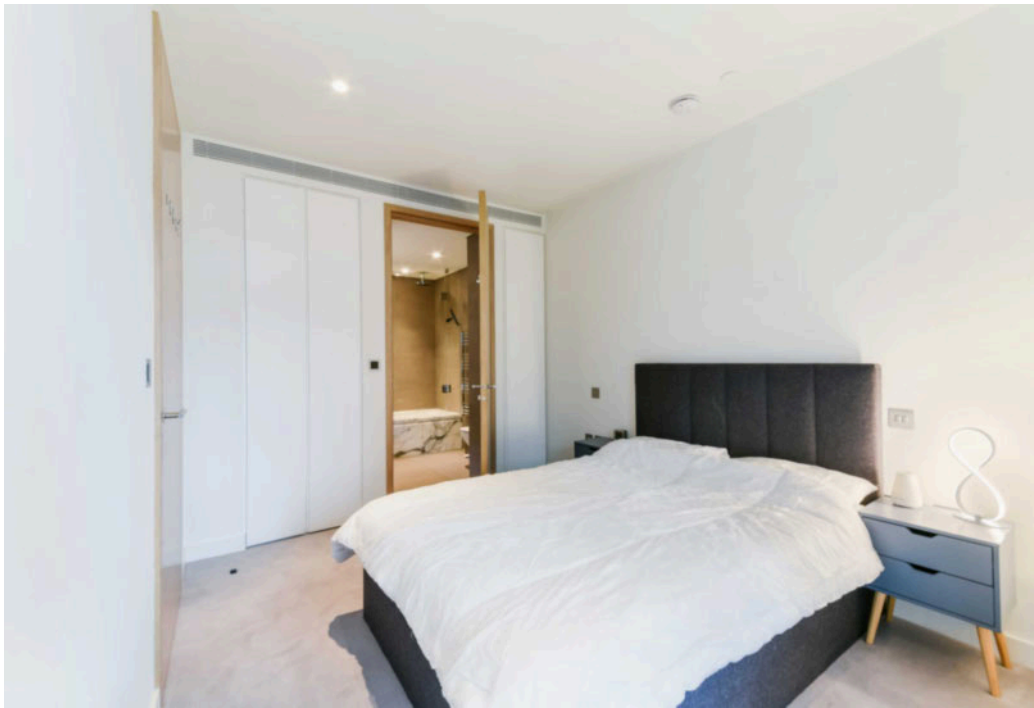
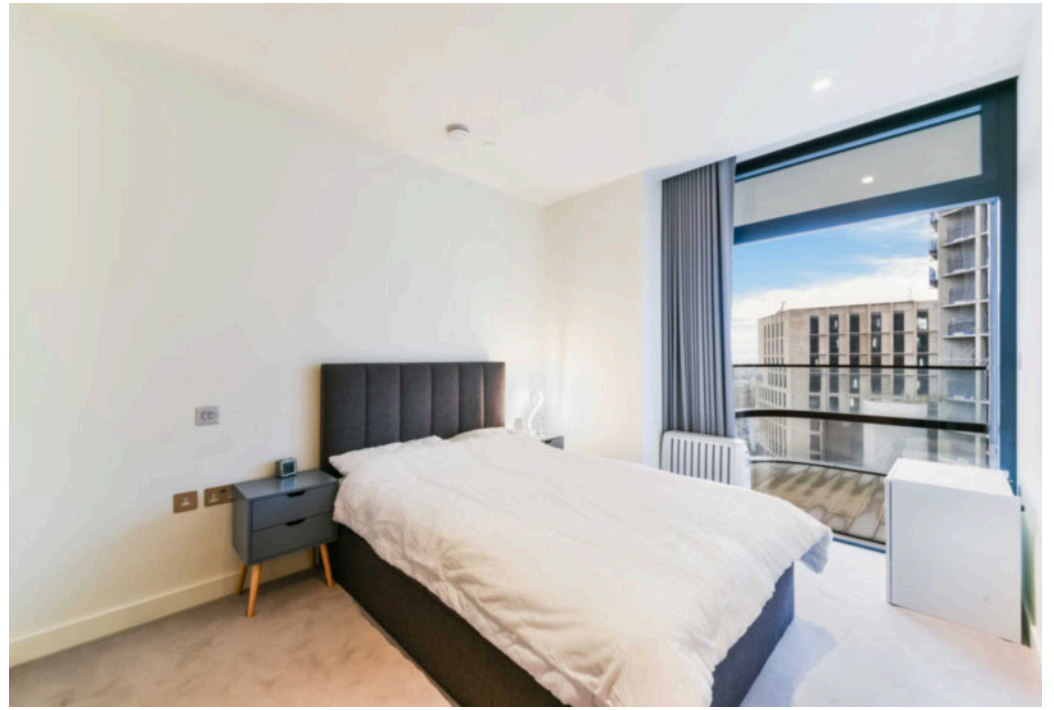
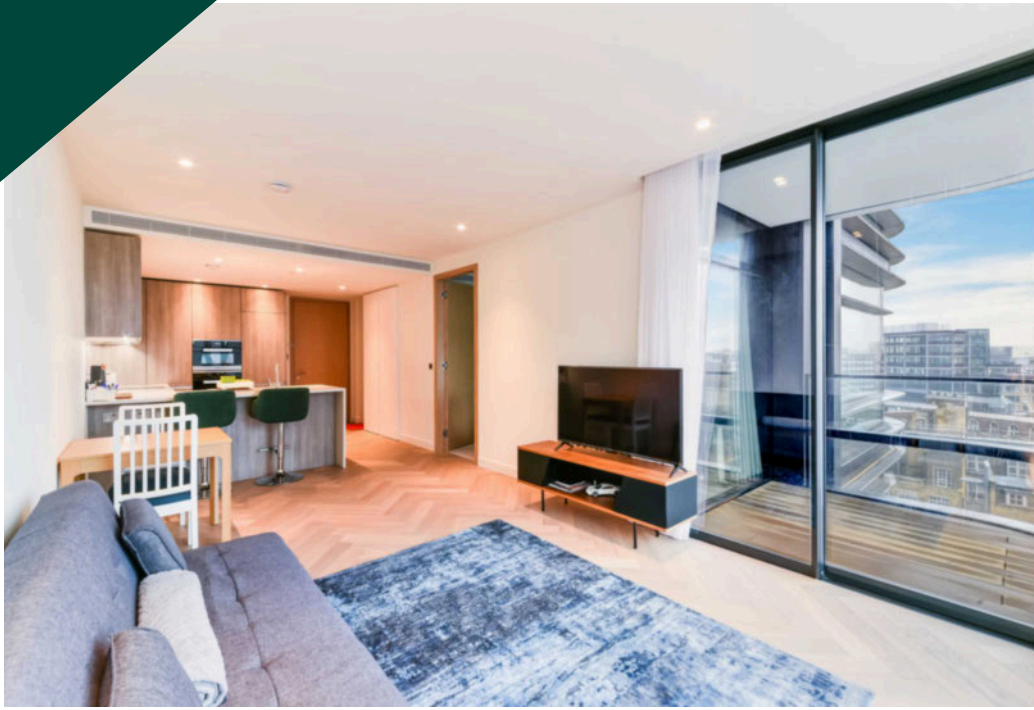




## Principal Place, Worship Street, Shoreditch, EC2A

Asking price **£800,000** | Leasehold



# Principal Place, Worship Street, Shoreditch, EC2A



1 Bedroom



1 Bathroom



1 Reception



Balcony



Gymnasium



Local Amenities



24-hour Concierge



0.4 MI Liverpool Street

This luxury one bedroom apartment with a balcony is part of the sought after Principal Tower, a landmark development close to the City and Liverpool Street Station. Comprising an open-plan kitchen and living quarters extending onto a private balcony and featuring stylish floor-to-ceiling glazing for fantastic views. There is an ample sized bedroom with fitted storage and a chic bathroom. The property benefits from high quality modern finishes throughout including stylish timber flooring to the living area and porcelain and stone floor tiling in the kitchen and bathroom, timber veneered kitchen cabinetry, recessed lighting, large glazing, comfort cooling and

heating and a bespoke bedroom wardrobe.

Residents have access to 24-hour concierge, gym, cinema, spa, business suite and a swimming pool. Benefiting from the many local amenities of Shoreditch being close to the Shoreditch High Street, there are a plethora of bars, cafes, eateries, clubs and restaurants. Located on the border of the City and Shoreditch Principal Tower has four major London stations within a 0.8 mile radius: Old Street, Liverpool Street, Aldgate and Aldgate East stations are all within a short walk from Principal Tower. Shoreditch High Street Station is also only an 8mins walk.

**Tenure:** Leasehold (976 years remaining)

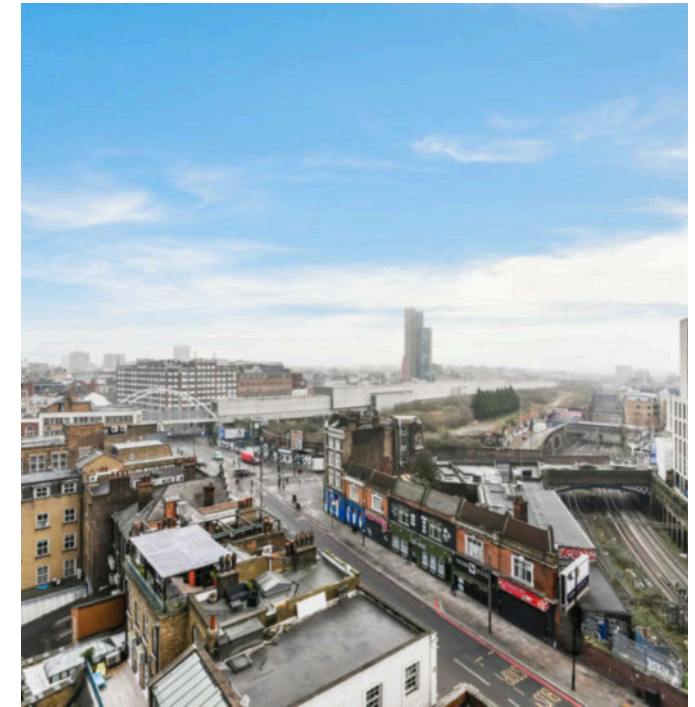
**Local Authority:** Hackney London

**Ground Rent:** £550 p.a.

**Council Tax Band:** E

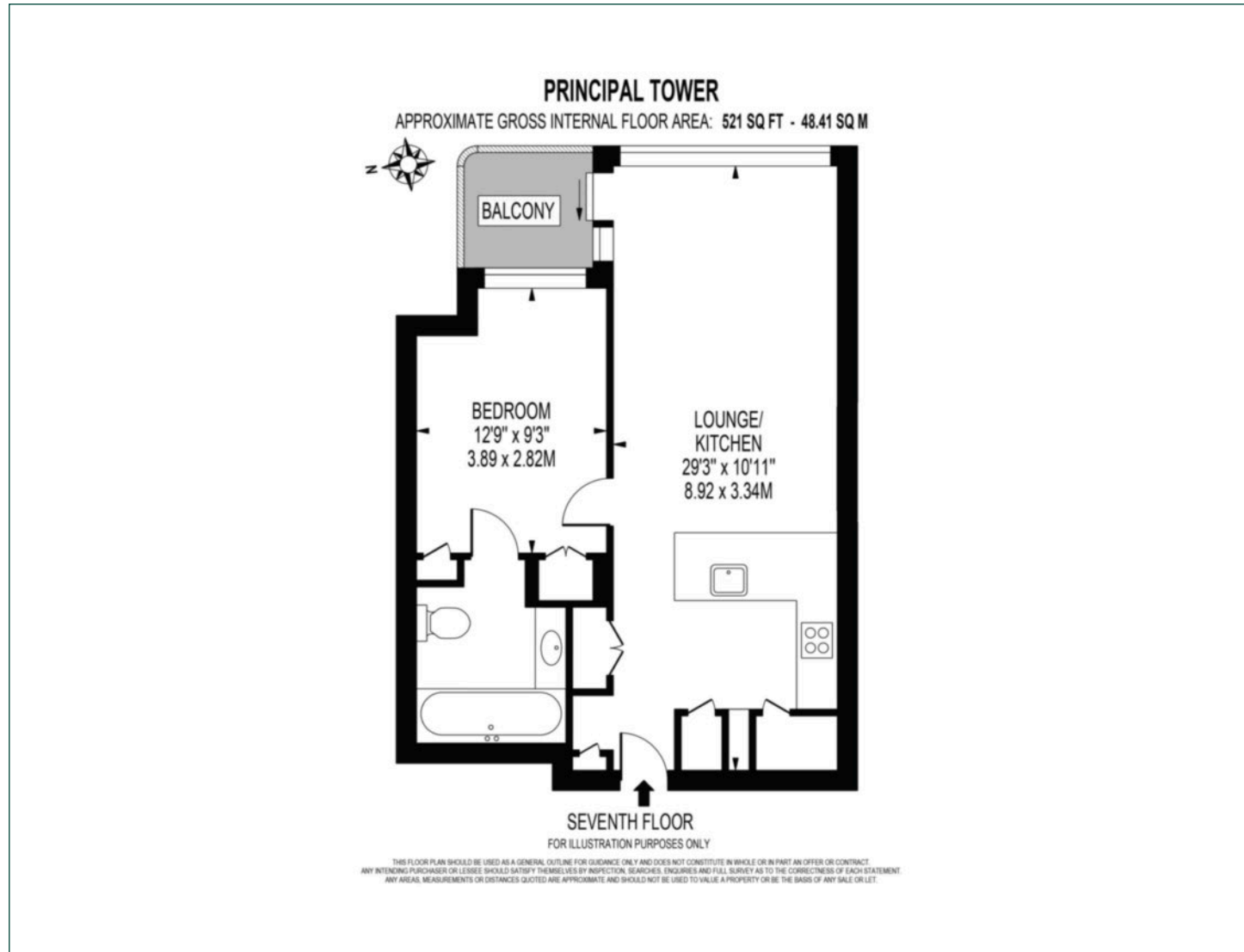
**Service Charge:** £6,475.70 p.a.

**EPC:** B



# Floorplan

521 sq ft | 48 sq m



## City & Aldgate

122 Whitechapel High Street, London, E1 7PT

## Sales

020 7488 2777 | [city.sales@chaseevans.com](mailto:city.sales@chaseevans.com)

## We're here to help.

IMPORTANT NOTICE - These particulars have been prepared in good faith and they are not intended to constitute part of an offer or contract. We have not performed a structural survey on this property and the services, appliances and specific fittings have not been tested. All photographs, measurements, floor plans and distances referred to are given as a guide and should not be relied upon.

[chaseevans.com](https://www.chaseevans.com)