



Baldwin Court, Lyon Square, Lyon Road, Harrow, HA1

Asking price **£520,000** | Leasehold



Baldwin Court, Lyon Square, Lyon Road, Harrow, HA1



2 Bedrooms



2 Bathrooms



1 Reception



Balcony



Secure Parking Space



Local Amenities



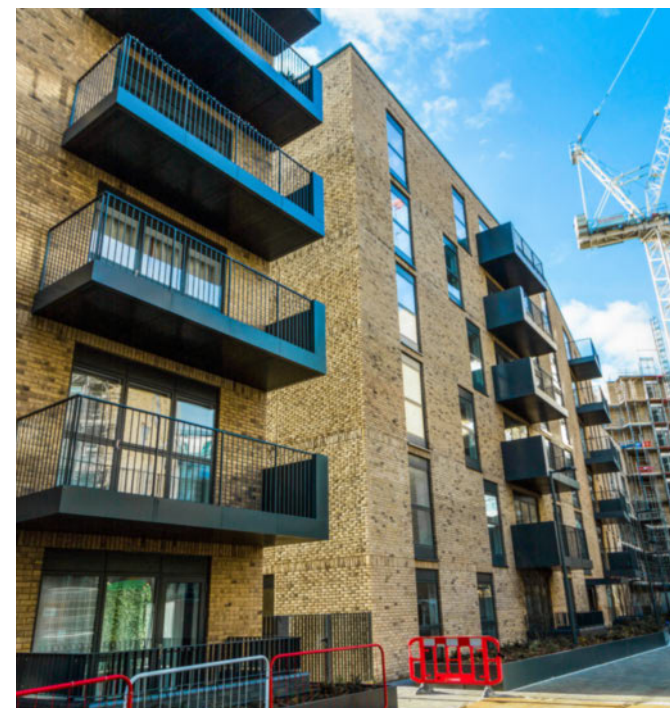
0.2 MI Harrow-On-The-Hill

A two bedroom, two bathroom property set within Baldwin Court; within Redrow's Lyon Square development. This apartment includes a spacious living and dining area with full height windows leading to a generous private balcony, modern fitted kitchen with integrated Siemens appliances, Amtico Spacia flooring, underfloor heating, fitted bedroom storage, master en suite, bright bathroom suite with smart fittings and fixtures. Secure parking space included.

Residents will also have access to secure cycle storage. There are several amenities located nearby

including restaurants, bars and cafés. St Anns and St Georges Shopping Centres offers a great selection of high street brands, restaurants and cafés.

Harrow is home several green spaces, ideal for enjoying quiet walks or taking part in leisure activities. The development is located near Harrow-on-the-Hill station, providing Underground and rail services for commutes to destinations across the Capital.



Tenure: Leasehold (992 years remaining)

Local Authority: Harrow

Ground Rent: £350 p.a.

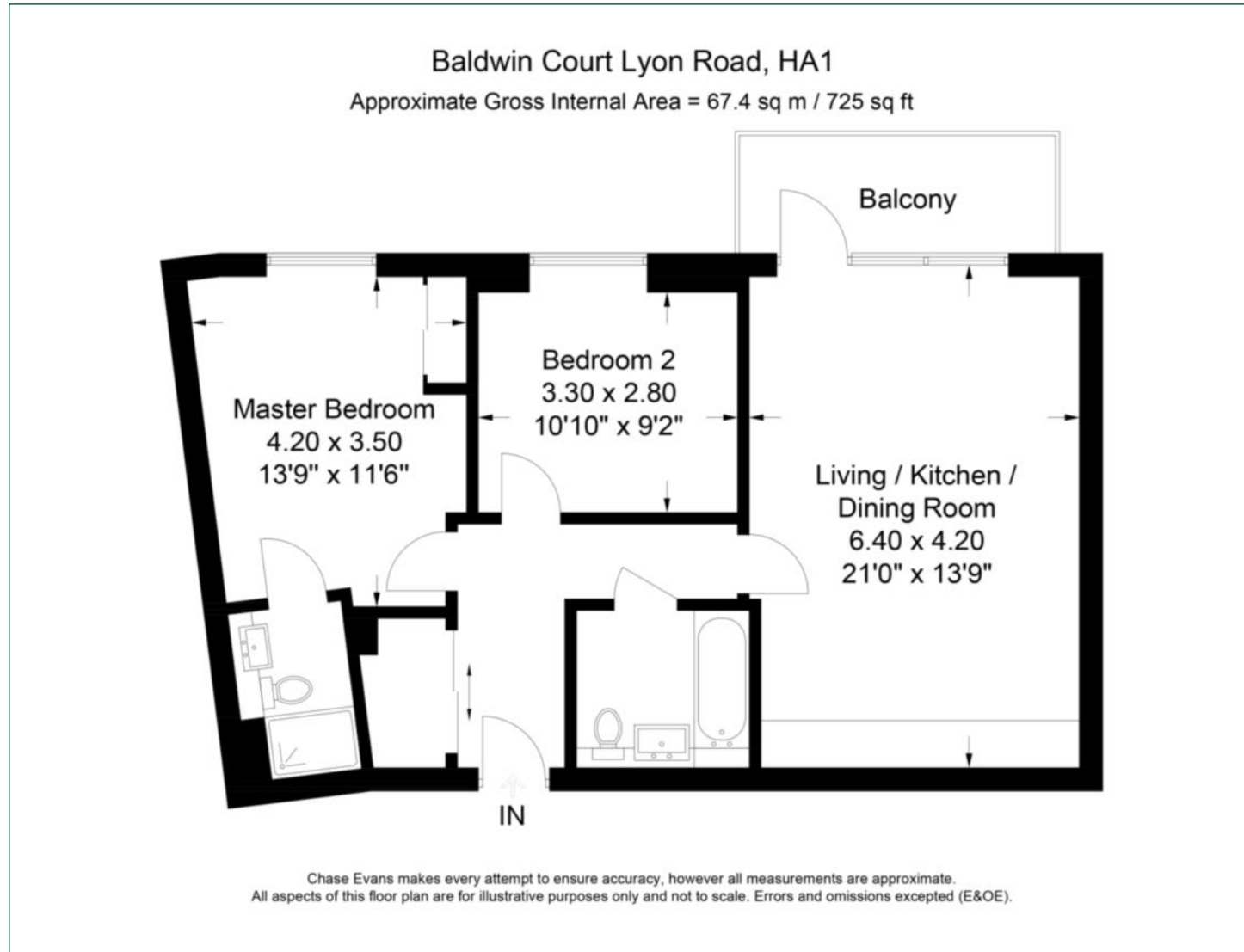
Council Tax Band: E

Service Charge: £2,514.62 p.a.

EPC: B

Floorplan

725 sq ft | 67.0 sq m



City & Aldgate

122 Whitechapel High Street, London, E1 7PT

Sales

020 7488 2777 | city.sales@chaseevans.com

We're here to help.

IMPORTANT NOTICE - These particulars have been prepared in good faith and they are not intended to constitute part of an offer or contract. We have not performed a structural survey on this property and the services, appliances and specific fittings have not been tested. All photographs, measurements, floor plans and distances referred to are given as a guide and should not be relied upon.

[chaseevans.com](https://www.chaseevans.com)