



## Sterling Mansions, Goodmans Fields, Leman Street, Aldgate, E1

Asking price **£1,150,000** | Leasehold



# Sterling Mansions, Goodmans Fields, Leman Street, Aldgate, E1



2 Bedrooms



2 Bathrooms



1 Reception



Terrace



Secure Parking



Local Amenities



24-Hour Concierge



0.1 MI Aldgate East

This spacious and elegant, luxury two bedroom, two bathroom penthouse apartment with a terrace and secure parking is set within a converted Edwardian mansion, a short walk from the City, Aldgate and Whitechapel. Set on the lower floor is the wonderfully bright open plan kitchen/diner and living room which opens onto a long private terrace overlooking the City. There is a guest cloakroom on this level too. A flight of stairs up is the master bedroom with an ensuite bathroom and a dressing room, a further double bedroom and a bathroom.

The property features large glazing, floor to ceiling glass wall with sliding doors to the terrace, a sleek kitchen island with an integrated hob, top end kitchen appliances and gloss cabinetry, wood flooring, underfloor heating, and

luxury bathroom fixtures.

Residents have access to a private gymnasium, swimming pool, spa facilities, private cinema, two acres of carefully manicured gardens, access to a business lounge and 24-hour concierge. Goodman's Fields is ideally placed for an unrivalled selection of local amenities and excellent transport links.

Moments from Aldgate and Aldgate East station for access to District, Hammersmith & City, Circle or Metropolitan line services. Future Crossrail services will operate from Whitechapel and will make travel to Canary Wharf possible in just 3mins and Bond Street reduced to 10 minutes.

**Tenure:** Leasehold (989 years remaining)

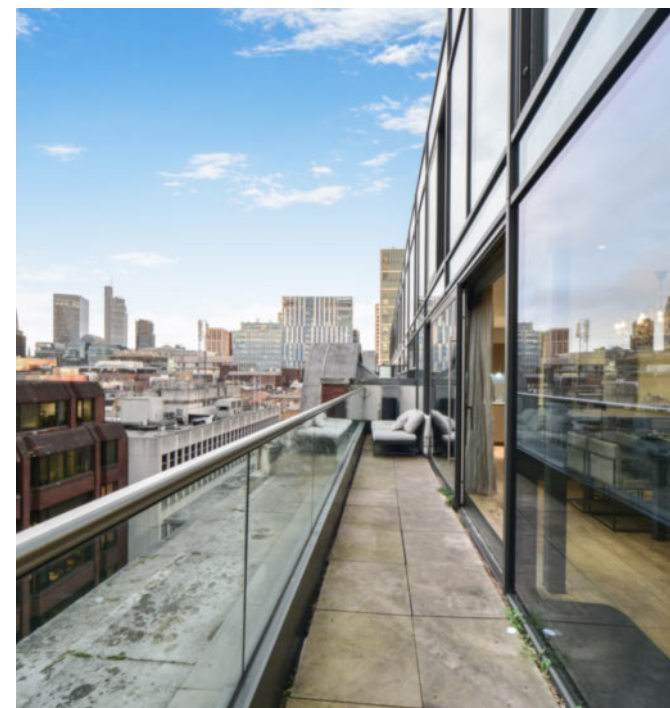
**Local Authority:** Tower Hamlets

**Ground Rent:** £600 p.a.

**Council Tax Band:** G

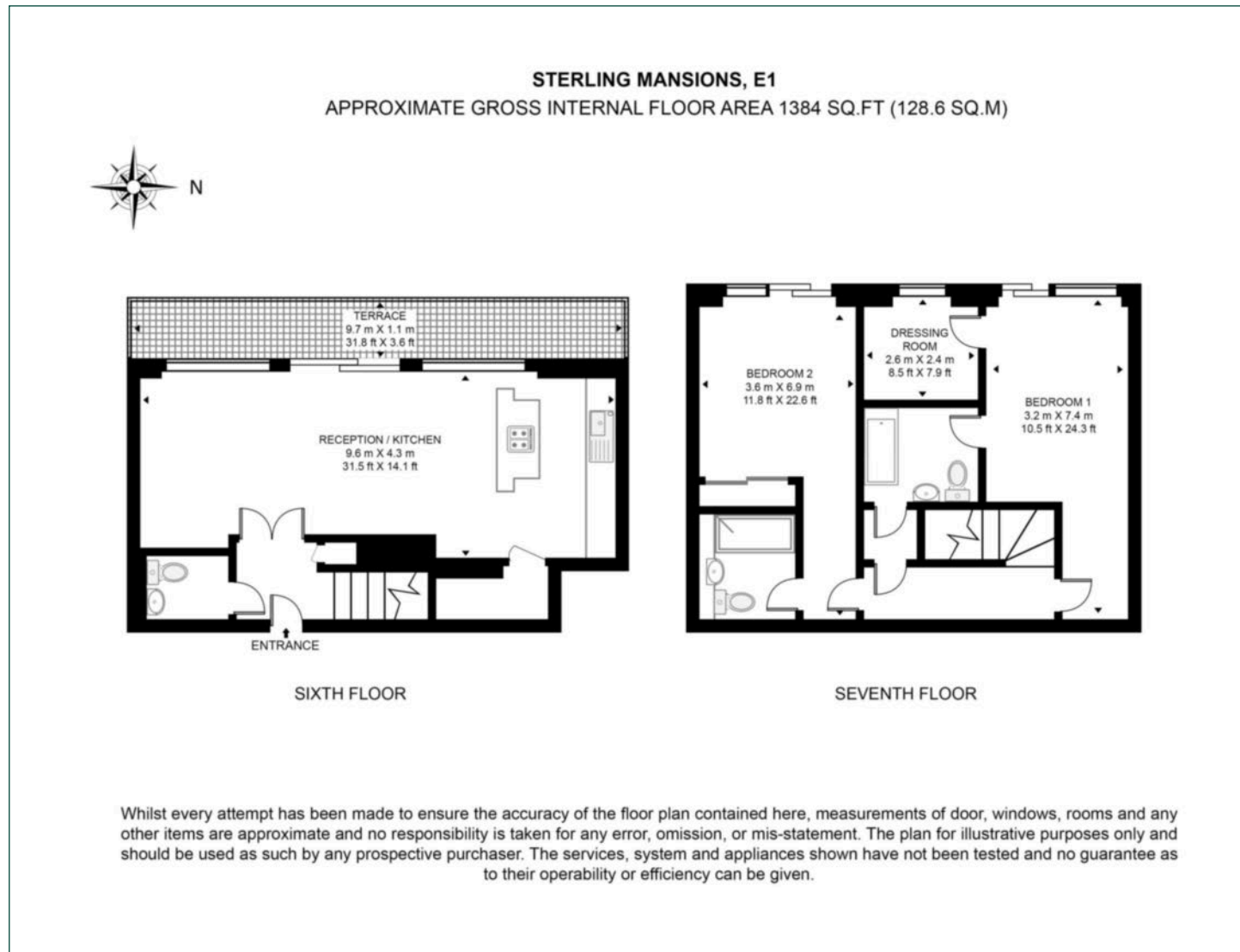
**Service Charge:** £13,213.42 p.a.

**EPC:** B



# Floorplan

1,384 sq ft | 128.48 sq m



## City & Aldgate

122 Whitechapel High Street, London, E1 7PT

## Sales

020 7488 2777 | [city.sales@chaseevans.co.uk](mailto:city.sales@chaseevans.co.uk)

## We're here to help.

IMPORTANT NOTICE - These particulars have been prepared in good faith and they are not intended to constitute part of an offer or contract. We have not performed a structural survey on this property and the services, appliances and specific fittings have not been tested. All photographs, measurements, floor plans and distances referred to are given as a guide and should not be relied upon.

[chaseevans.com](http://chaseevans.com)

 Chase Evans