

Cashmere House, Goodman's Fields, Leman Street, Aldgate, E1

Guide price **£1,000,000** | Leasehold



Cashmere House, Goodman's Fields, Leman Street, Aldgate, E1



2 Bedrooms



2 Bathrooms



1 Reception



Balcony



Gymnasium



Local Amenities



24-Hour Concierge



0.1 MI Aldgate

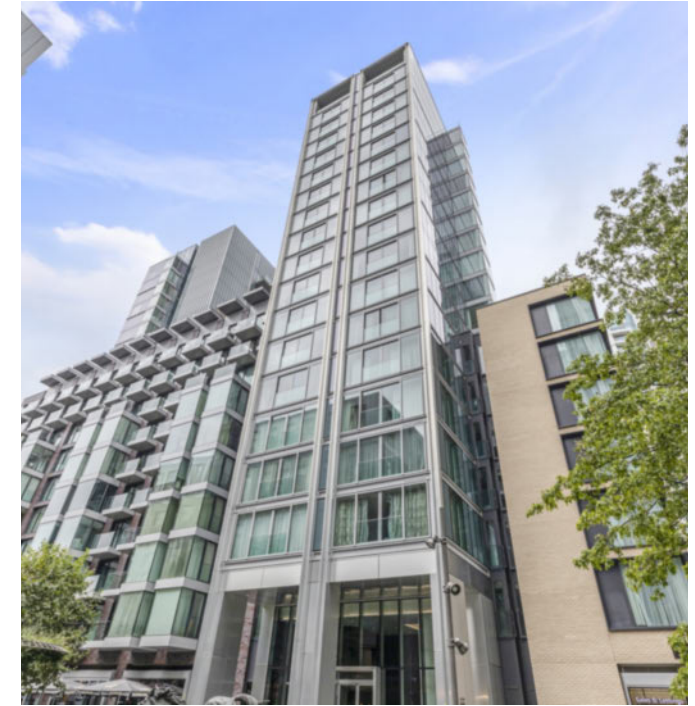
Luxury two bedrooms, two bathroom property in the heart of the City and ideally located for Canary Wharf, The Docklands and The South Bank.

This property benefits from access to two private balconies, accommodation spans 899 sq ft and includes an open plan living room, modern fitted kitchen with integrated appliances, wood flooring, high ceilings, two ample sized bedrooms with built in wardrobes, master with en suite, tiled bathroom suite and high quality finish throughout.

Residents can access on-site facilities including a

private gymnasium, swimming pool, spa facilities, private cinema, two acres of carefully manicured gardens, access to a business lounge and 24-hour concierge.

There are several amenities located nearby including bars, cafés, restaurants and shops. The development is located a short distance from several transport links including Aldgate East Underground station, for commutes to key destinations across the Capital.



Tenure: Leasehold (988 years remaining)

Local Authority: Tower Hamlets

Ground Rent: £600 p.a.

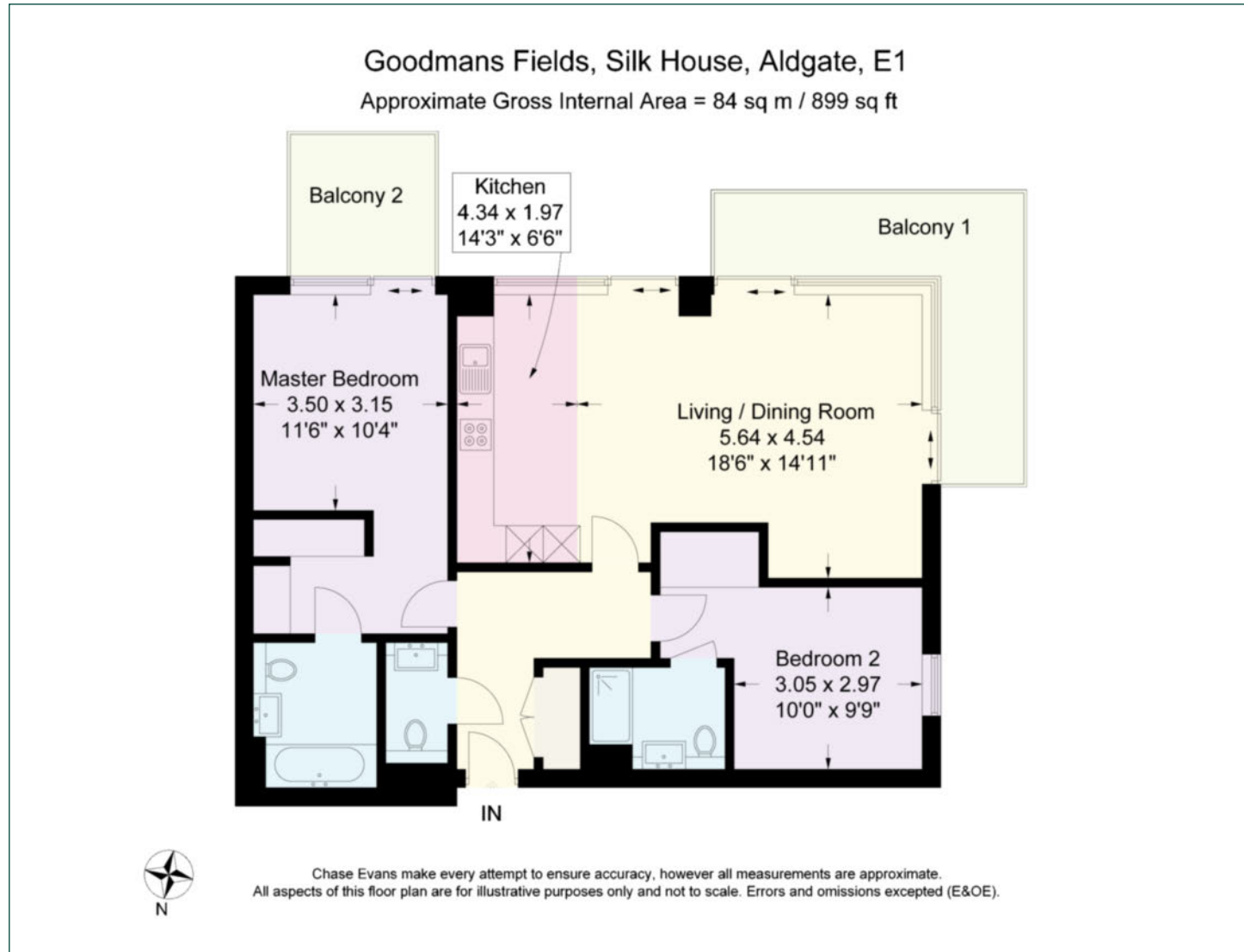
Council Tax Band: F

Service Charge: £9,786.92 p.a.

EPC: B

Floorplan

899 sq ft | 84 sq m



City & Aldgate

122 Whitechapel High Street, London, E1 7PT

Sales

020 7488 2777 | city.sales@chaseevans.com

We're here to help.

IMPORTANT NOTICE - These particulars have been prepared in good faith and they are not intended to constitute part of an offer or contract. We have not performed a structural survey on this property and the services, appliances and specific fittings have not been tested. All photographs, measurements, floor plans and distances referred to are given as a guide and should not be relied upon.

chaseevans.com