

Back Church Lane, Hoopers Square, Aldgate, E1

Asking price **£650,000** | Leasehold



Back Church Lane, Hoopers Square, Aldgate, E1



2 Bedrooms



2 Bathrooms



1 Reception



Balcony



24-Hour Security



Local Amenities



0.4 MI Tower Hill

A bright and airy two double bedroom, two bathroom apartment set within Hoopers Square, grouped round a delightful half acre garden.

Accommodation spans 902 sq ft and includes a spacious living room, separate fitted kitchen with integrated appliances, wood flooring, two generous sized bedrooms with fitted bedroom wardrobe space, master with en suite, tiled bathroom décor and a private balcony with views over the courtyard gardens and partial shard views which can be assessed through the living area and bedrooms. Ample storage throughout.

The development is secure, gated and having 24-hour

security on site, video surveillance around the perimeter and a secure entry system requiring a key fob to enter. Hooper Square is a development of 131 centrally situated apartments grouped round a delightful half acre garden. Very centrally located, being equidistant from Aldgate and Tower Hill underground stations and hence within easy walking distance of the City and less than two and a half miles from Canary Wharf. A wonderful team of Gurkha ex-soldiers provides security and concierge services 24/7. A professional gardener takes care of the lovely gardens, permanent cleaner is employed to take care of all indoor cleaning, while a yard man is employed to ensure all the tidiness outside.

Tenure: Leasehold (91 years remaining)

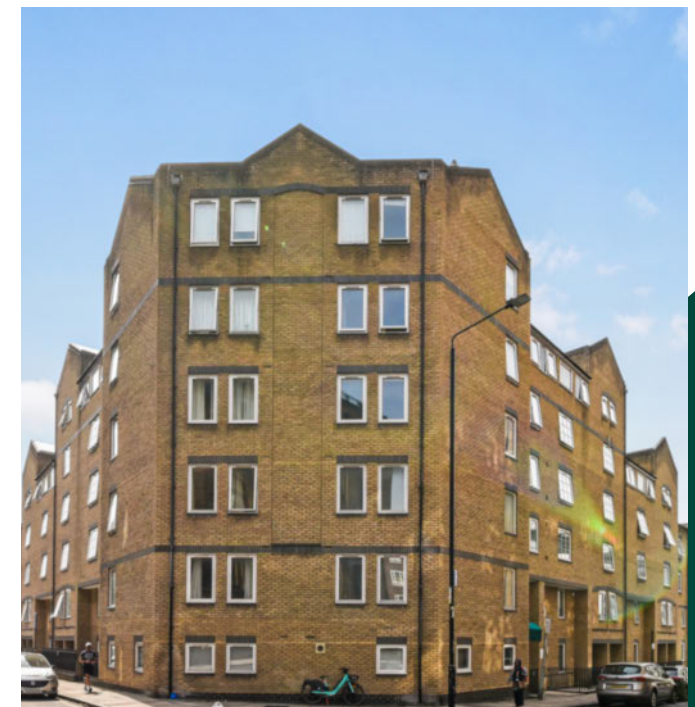
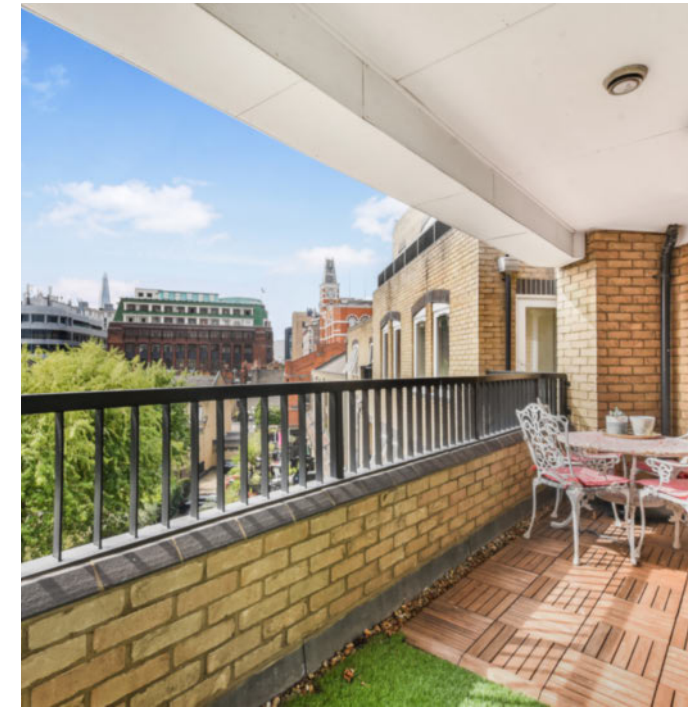
Local Authority: Tower Hamlets

Ground Rent: Peppercorn

Council Tax Band: E

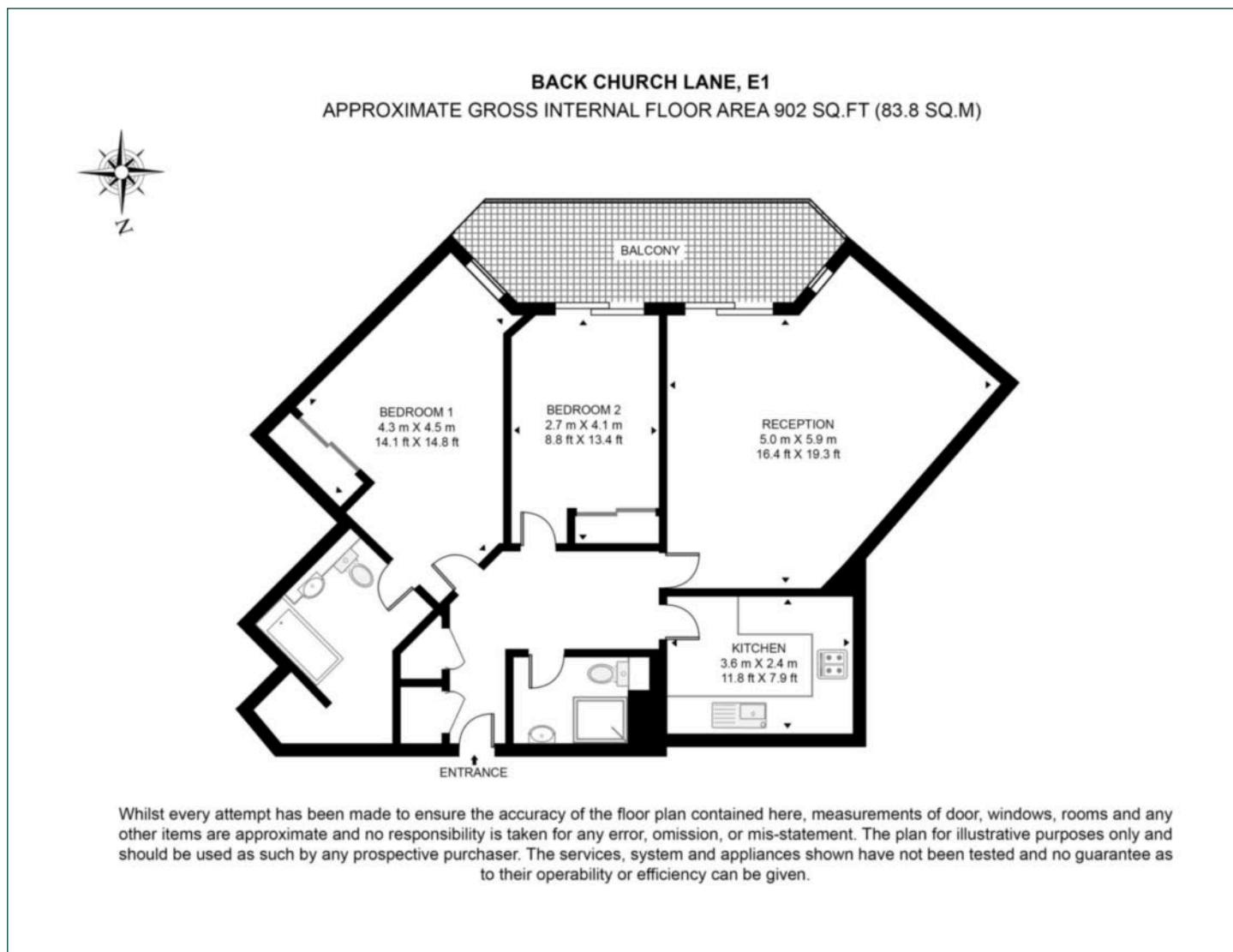
Service Charge: £5,354.74 p.a.

EPC: B



Floorplan

902 sq ft | 83.8 sq m



City & Aldgate

122 Whitechapel High Street, London, E1 7PT

Sales

020 7488 2777 | city.sales@chaseevans.com

We're here to help.

IMPORTANT NOTICE - These particulars have been prepared in good faith and they are not intended to constitute part of an offer or contract. We have not performed a structural survey on this property and the services, appliances and specific fittings have not been tested. All photographs, measurements, floor plans and distances referred to are given as a guide and should not be relied upon.

[chaseevans.com](https://www.chaseevans.com)