



Bootmakers Court, The Watermark, Stepney Green, E1

Asking price **£525,000** | Leasehold



Bootmakers Court, The Watermark, Stepney Green, E1



2 Bedrooms



2 Bathrooms



1 Reception



Balcony



Lift Access



Secure Cycle Storage



Local Amenities



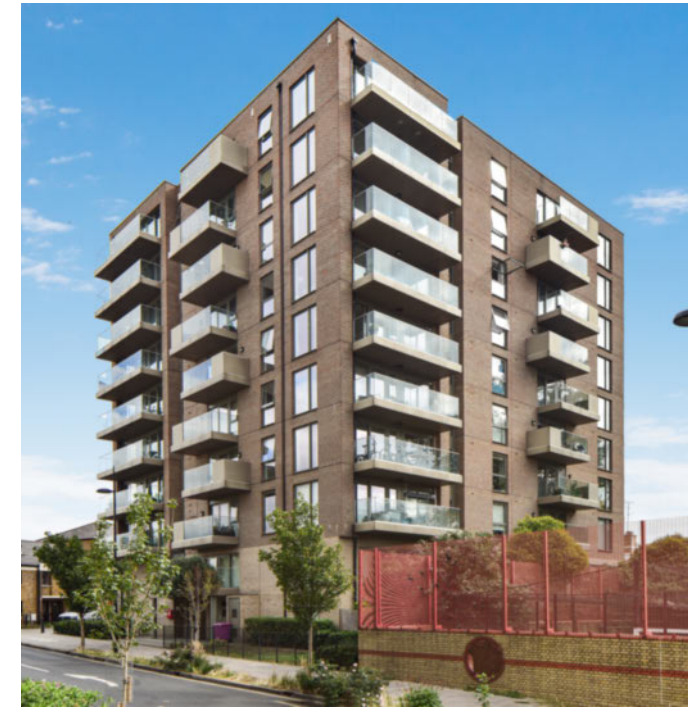
0.6 MI Limehouse

A two-bedroom, two-bathroom property with a balcony in Bootmakers Court, The Watermark, a development in Limehouse E1, ideally located for easy access to the City and Canary Wharf. This apartment comprises an open-plan kitchen/living/dining area with dual-aspect views that extend onto the balcony, two bedrooms and two bathrooms. Features include integrated appliances, wood flooring, a video entry system, and modern bathroom fittings and fixtures. The generously sized balcony has views of the canal.

Residents have access to a landscaped communal

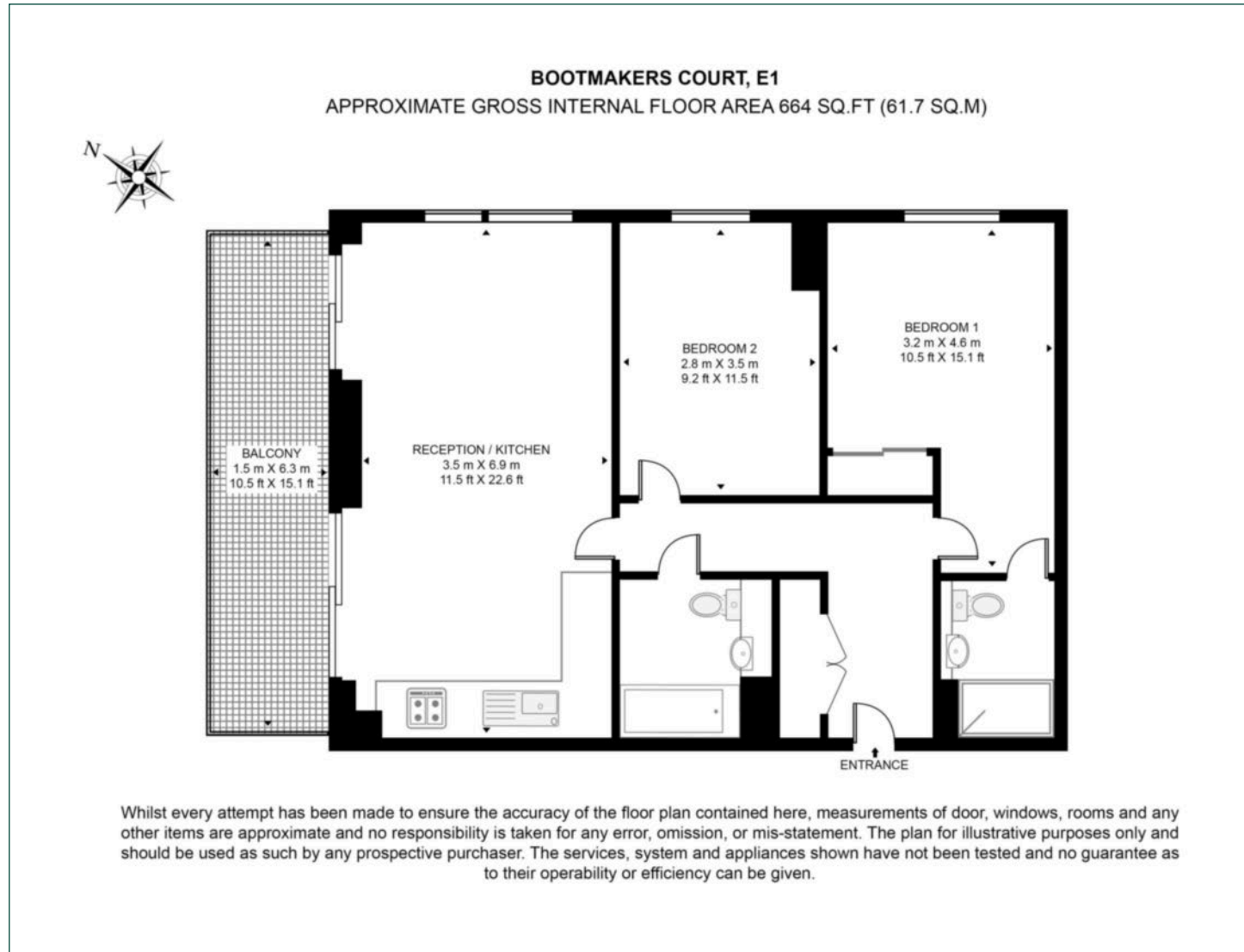
courtyard, lifts and secure external cycle storage. There are several amenities located nearby including shops and restaurants. The development is located near Limehouse DLR and Stepney Green Underground station, providing fast transport links for commutes to Canary Wharf, the City and West End.

Tenure:	Leasehold (238 years remaining)	Local Authority:	Tower Hamlets
Ground Rent:	£298 p.a.	Council Tax Band:	D
Service Charge:	£155.55 per month	EPC:	B



Floorplan

664 sq ft | 61.7 sq m



City & Aldgate

122 Whitechapel High Street, London, E1 7PT

Sales

020 7488 2777 | city.sales@chaseevans.com

We're here to help.

IMPORTANT NOTICE - These particulars have been prepared in good faith and they are not intended to constitute part of an offer or contract. We have not performed a structural survey on this property and the services, appliances and specific fittings have not been tested. All photographs, measurements, floor plans and distances referred to are given as a guide and should not be relied upon.

chaseevans.com