



Carriage House, City North Place, Finsbury Park, N4

Asking price **£695,000** | Leasehold



Carriage House, City North Place, Finsbury Park, N4



2 Bedrooms



2 Bathrooms



1 Reception



2 Balconies



Communal Roof Terrace



Local Amenities



24-Hour Concierge



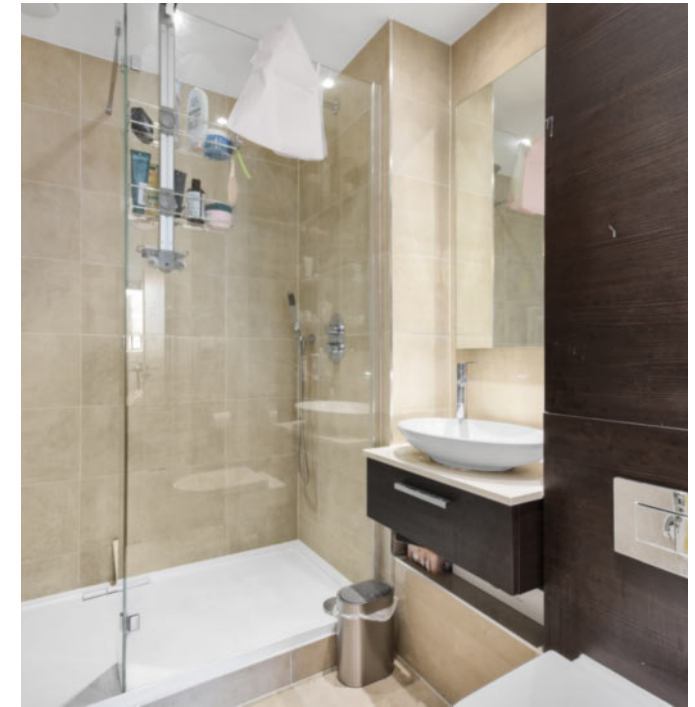
0.2 MI Finsbury Park

Luxury two bedroom property set within City North Place, a new landmark development in Finsbury Park N4, set across three unique buildings including two towers. The property comprises spacious living area, fitted kitchen with integrated appliances, two private balconies, two good-sized bedrooms with fitted wardrobes, master en-suite and modern bathroom suite.

Residents benefit from a 24-hour concierge and The Pavilion, a private residents' landscaped roof garden with a stunning residents' Wi-Fi Lounge. Finsbury Park underground station is just 0.2 miles

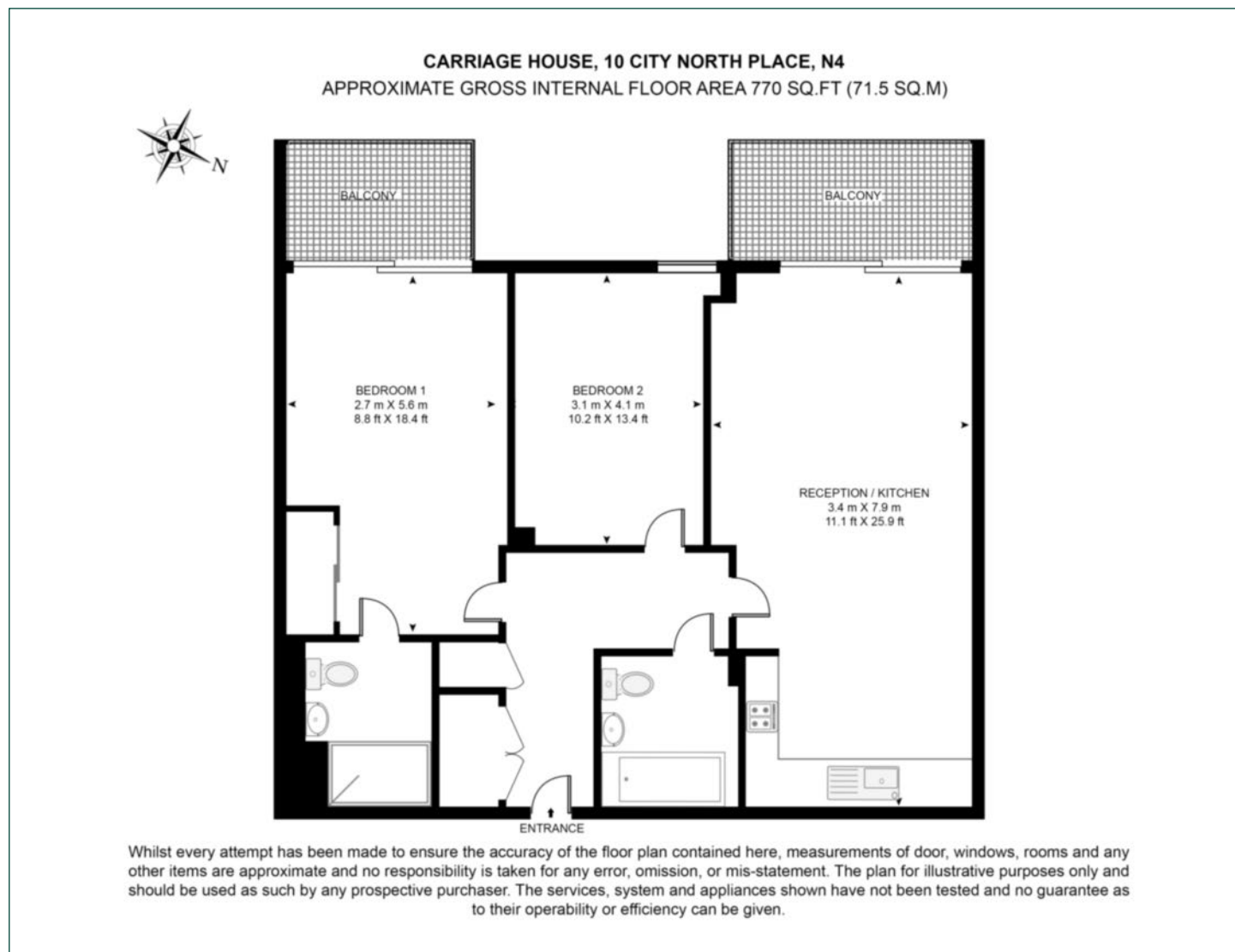
away from City North Place, meaning residents are well connected with the rest of the capital via the Piccadilly, Victoria, and overground lines, along with the railway services. City North Place is ideally located next to a series of local amenities, including restaurants, shops, and supermarkets, as well as Finsbury Park which offers massive green areas.

Tenure:	Leasehold (995 years remaining)	Local Authority:	Islington London
Ground Rent:	£550 p.a.	Council Tax Band:	E
Service Charge:	£4,263.39 p.a.	EPC:	B



Floorplan

770 sq ft | 71.5 sq m



City & Aldgate

122 Whitechapel High Street, London, E1 7PT

Sales

020 7488 2777 | city.sales@chaseevans.com

We're here to help.

IMPORTANT NOTICE - These particulars have been prepared in good faith and they are not intended to constitute part of an offer or contract. We have not performed a structural survey on this property and the services, appliances and specific fittings have not been tested. All photographs, measurements, floor plans and distances referred to are given as a guide and should not be relied upon.

[chaseevans.com](https://www.chaseevans.com)

 Chase Evans