

The Solarium, Apt Parkview, Brentford, TW8

Asking price **£350,000** | Leasehold



The Solarium, Apt Parkview, Brentford, TW8



1 Bedroom



1 Bathroom



1 Reception



Private Balcony



Residents Gym



Cinema Room



Communal Rooftop Terrace



24-Hr Concierge



0.4 MI Kew Bridge

Spacious one bedroom apartment set in The Solarium, part of the Apt Parkview development in Brentford, TW8. This modern property comprises a open-plan living/dining area extending onto a private balcony, featuring wooden flooring, floor-to-ceiling glazing, integrated high-spec kitchen, a sizable master bedroom and a contemporary bathroom suite.

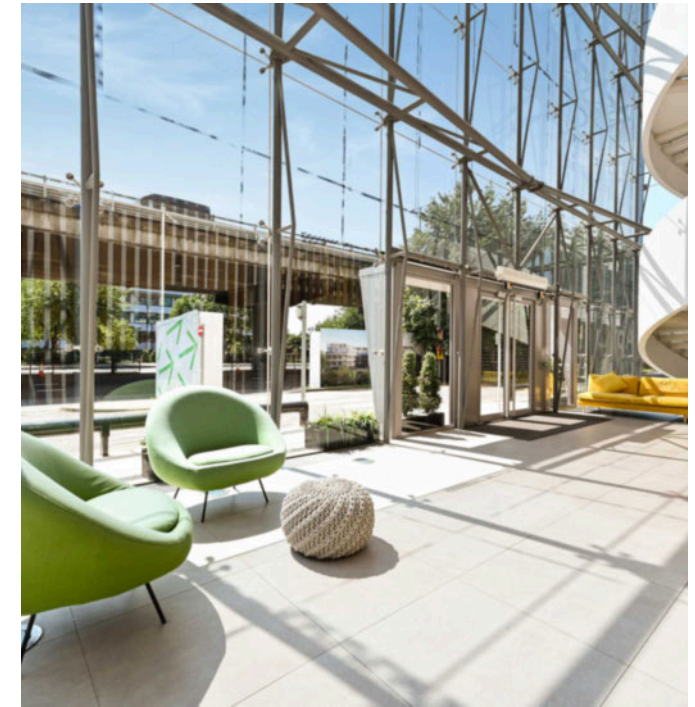
This sought-after development offers private access to Gunnersbury park, 24-hour concierge service, residents' gymnasium, lounge, theatre room, rooftop terrace and local transport links into Central

London. Situated just North of Kew, Brentford is a burgeoning hub of business and regeneration. Kew Bridge railway station is only 0.4 miles away and abundance of local amenities are within easy reach.

Tenure: Leasehold (245 years remaining) **Local Authority:** Hounslow

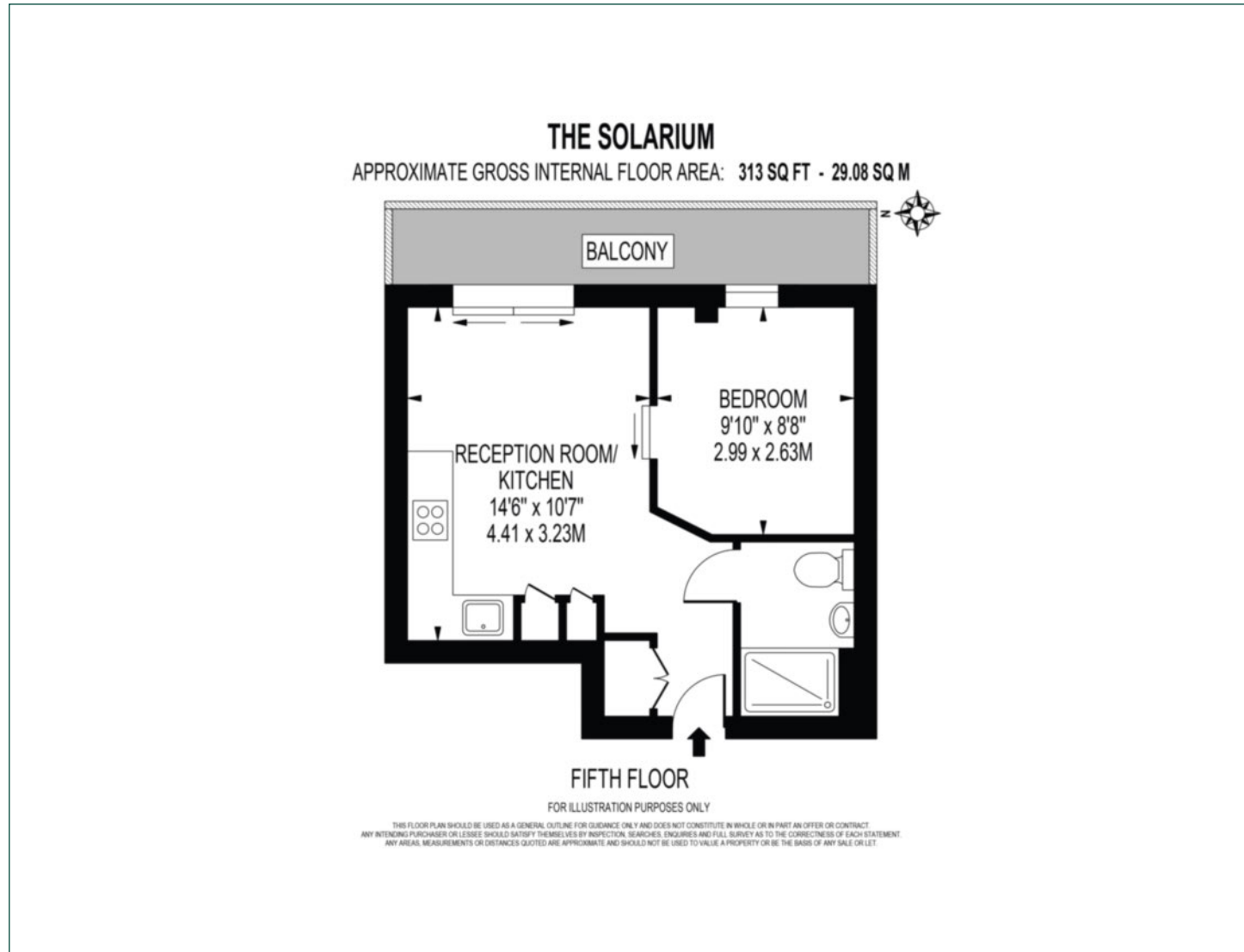
Ground Rent: £406.7 p.a. **Council Tax Band:** C

Service Charge: £2,652.92 p.a. **EPC:** C



Floorplan

313 sq ft | 29.08 sq m



City & Aldgate

122 Whitechapel High Street, London, E1 7PT

Sales

020 7488 2777 | city.sales@chaseevans.com

We're here to help.

IMPORTANT NOTICE - These particulars have been prepared in good faith and they are not intended to constitute part of an offer or contract. We have not performed a structural survey on this property and the services, appliances and specific fittings have not been tested. All photographs, measurements, floor plans and distances referred to are given as a guide and should not be relied upon.

chaseevans.com