



Park West, Edgware Road, Paddington, W2

Asking price **£750,000** | Leasehold



Park West, Edgware Road, Paddington, W2



2 Bedrooms



1 Bathroom



1 Reception



Lift Access



Local Amenities



24-Hour Concierge



0.3 MI Edgware Road

A two bedroom apartment set within the stunning development Park West, comprising of a spacious reception room with a large hallway offering ample dining space, well equipped contemporary kitchen with a generous amount of storage, two bright bedrooms, with built-in storage/wardrobe space. Wooden flooring and beautifully tiled bathroom suite, family bathroom. Guest cloakroom.

Benefits include 24-hour concierge and lifts. Park West is brilliantly located just a short walk from Marble Arch tube station, Oxford Street and the open spaces of Hyde Park. The local shops and

restaurants of Edgware Road are easily accessible, the entertainment venues of the West End are in good distance.

Tenure: Leasehold (79 years)

Local Authority: City of Westminster

Ground Rent: £200

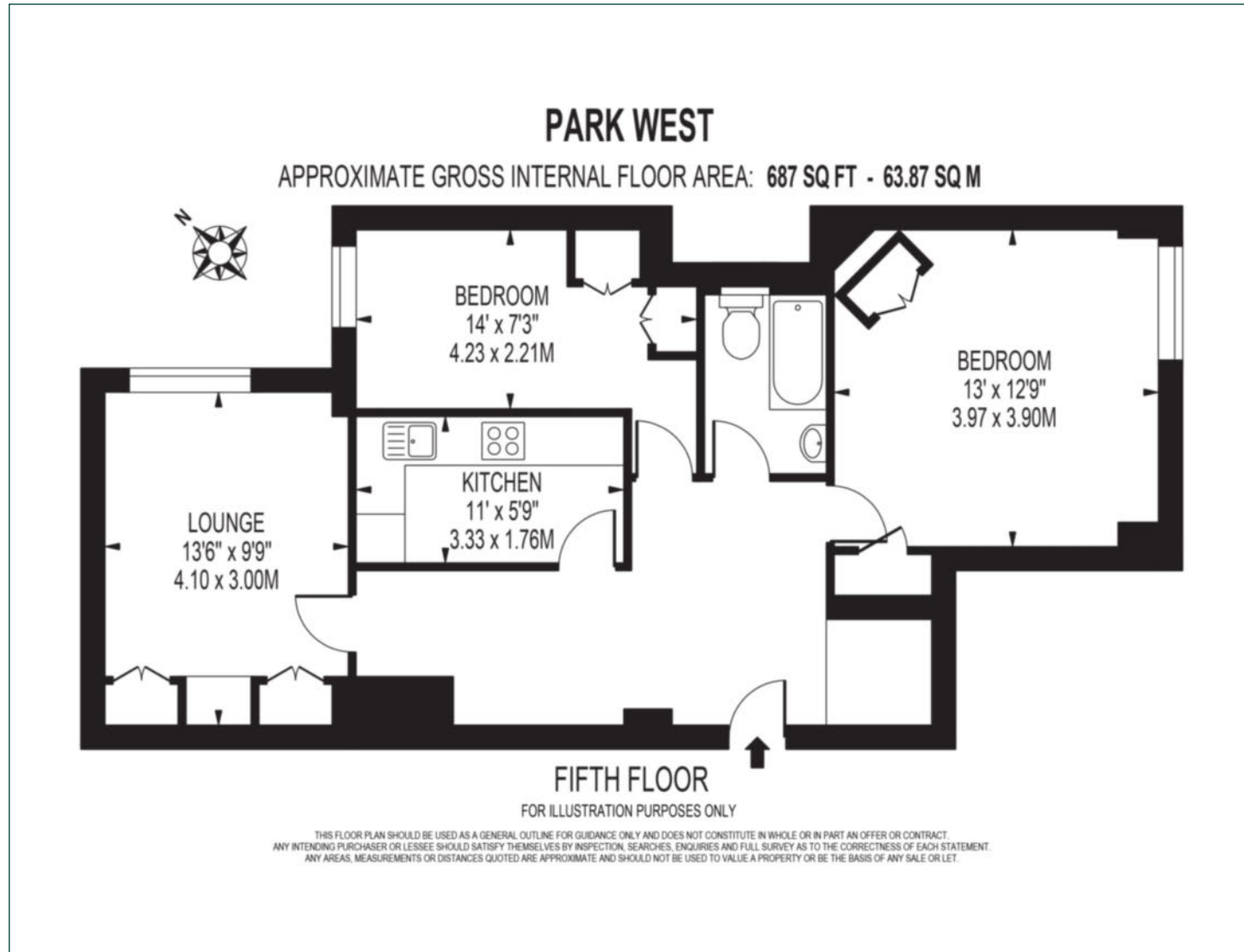
Council Tax Band: F

Service Charge: £5,593.48

EPC: D

Floorplan

687 sq ft | 63.87 sq m



City & Aldgate

122 Whitechapel High Street, London, E1 7PT

Sales

020 7488 2777 | city.sales@chaseevans.co.uk

We're here to help.

IMPORTANT NOTICE - These particulars have been prepared in good faith and they are not intended to constitute part of an offer or contract. We have not performed a structural survey on this property and the services, appliances and specific fittings have not been tested. All photographs, measurements, floor plans and distances referred to are given as a guide and should not be relied upon.

[chaseevans.com](https://www.chaseevans.com)