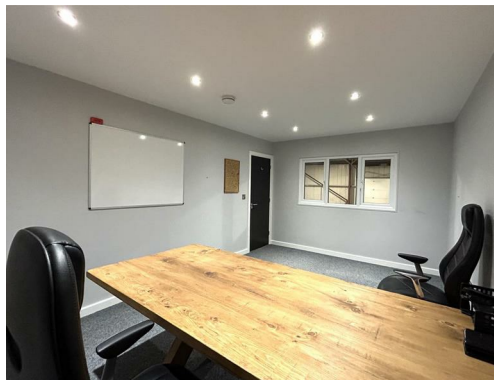


Offices within Greensleeves,
Standback Way,

PER MONTH
£250 Per Month

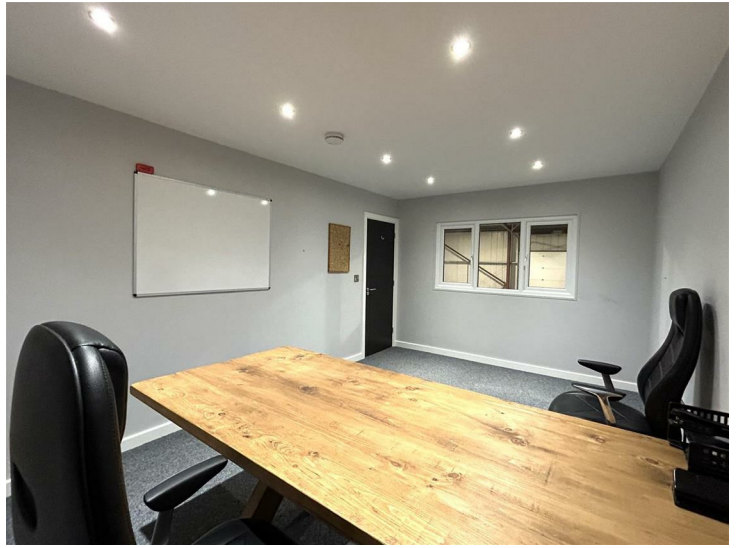


THESE OFFICES OFFER THE OPPORTUNITY FOR
MODERN WORKSPACES AT AFFORDABLE PRICES.

PAISLEY
PROPERTIES

OFFICE ONE 16'4" apx x 10'5" apx

This large office comes with furniture and is available for £300 per calendar month including bills.



OFFICE TWO 14'0" apx x 9'6" apx

Again complete with furniture and including bills this office is £250 per calendar month and could easily be rented alongside office three as it has an inter connecting door.



OFFICE THREE 14'0" apx x 9'9" apx

This good sized office is £250 per calendar month including bills.



CONFERENCE ROOM

Use of the conference room is included in the rent for all three offices. Availability is subject to the other businesses use.



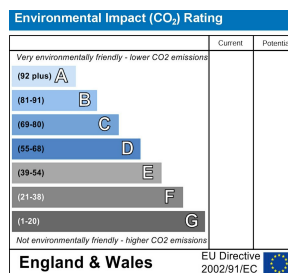
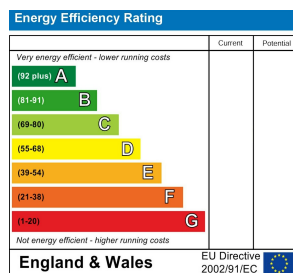
NEW LETTINGS INFORMATION

All measurements are approximate and quoted in metric with imperial equivalents and for general guidance only and whilst every attempt has been made to ensure accuracy, they must not be relied on. We advise you take your own measurements prior to ordering any fixtures, fittings or furnishings. Internal photographs are produced for general information and it must not be inferred that any item shown is included with the property. You are advised to check availability and book a viewing appointment prior to travelling to view.

As of the 1st June 2019 there will be no referencing fees for tenants but we do ask that you are committed to renting the property before applying as fees will be incurred by the landlord and Paisley Properties in order to carry out thorough credit referencing.

We may ask for a holding deposit equivalent to approximately 1 weeks rent, terms and condition apply and will be provided upon application.

We always charge a deposit which is no more than the equivalent of five weeks rent. Please check the individual property for deposit amounts. All our deposits are held in a separate insured account held by the Deposit Protection Scheme (DPS).



www.paisleyproperties.co.uk

Skelmanthorpe Office:
17 Commercial Road,
Skelmanthorpe, HD8 9DA
t: 01484 443893

Almondbury Office:
75-77 Northgate,
Almondbury, HD5 8RX
t: 01484 443922

Mapplewell Office:
4 Blacker Road,
Mapplewell, S75 6BW
t: 01226 395404

PAISLEY
PROPERTIES