






Westminster Place, West Heath, Birmingham, B31 3PL

Offers In Region Of £160,000

 2  2  1

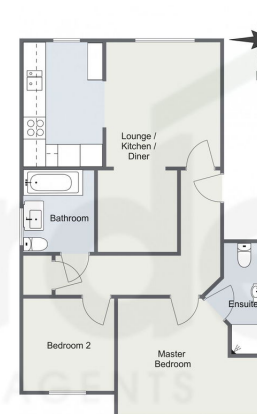


- Two Bedrooms
- Family Bathroom
- Allocated Parking
- Entrance Hall
- Open Plan Modern Lounge / Kitchen / Diner
- En-Suite to Master Bedroom
- Intercom System
- Close to Amenities





Westminster Place, West Heath



Total Area Approx
56.2 Sq M
604.9 Sq Ft

For illustrative purposes only. Decorative finishes, fixtures & fittings do not represent the current state of the property. Measurements are approximate & not to scale. Floor Plans made using RoomSketcher.

Introducing this beautifully presented two-bedroom apartment, perfectly situated in the desirable area of West Heath, Birmingham.

Boasting stylish, contemporary living throughout, this home features an open-plan lounge, kitchen, and dining area, an en-suite to the master bedroom, a family bathroom, allocated parking and a well maintained communal setting.

For more information on this house or to arrange a viewing please call the office on:

0121 453 4349

Alternatively, you can scan the QR to view all of the details of this property online.



arden
ESTATE AGENTS