



Romsley Close, Rednal, Birmingham, B45 9UX

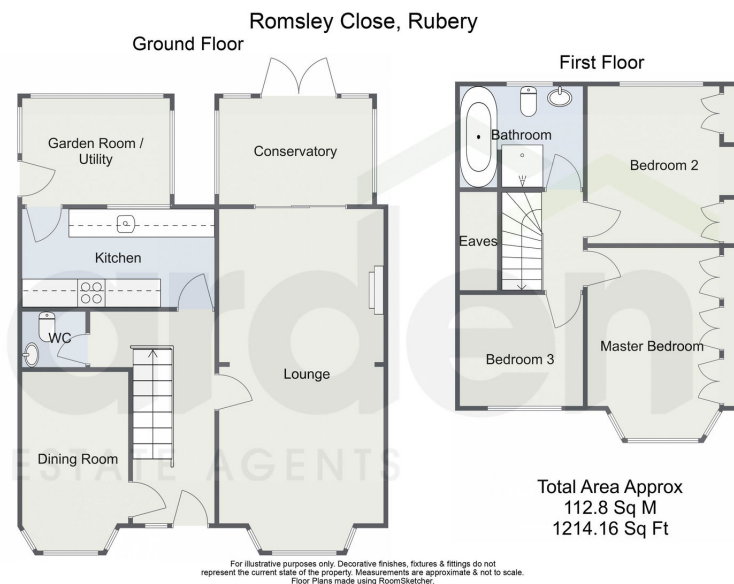
Offers Over £290,000

3 1 1



- Semi-Detached
- Dining Room
- Kitchen
- Conservatory
- 3 Bedrooms
- Off Road Parking
- Living Room
- Utility
- Downstairs WC
- Family Bathroom





Introducing this 3-bedroom semi-detached home in Rubery, Birmingham – a fantastic opportunity to modernise and create your ideal home. Offering generous living space, the property features a spacious lounge, a conservatory, dining room, kitchen, a garden room/utility. Completing the ground floor is a convenient downstairs WC. Upstairs, you'll find three good-sized bedrooms and a family bathroom. With potential throughout, this home is an excellent project for those looking to put their stamp on it. Additional highlights include a driveway for off-road parking and a generous rear garden.

For more information on this house or to arrange a viewing please call the office on:

0121 453 4349

Alternatively, you can scan the QR to view all of the details of this property online.



arden
ESTATE AGENTS