

Wright  
& Crawford  
1906



15 Peter Coats  
Building,  
31 Calside,  
Paisley PA2 6DB





## LOCATION

Located within the iconic Peter Coats "B" listed building on Paisley's south side, this elevated first floor apartment offers excellent living accommodation in a popular residential area.

The building, by renowned local architect Thomas Graham Abercrombie, is a unique, elaborately decorated red sandstone former nurses' home that dates to 1897-1908. Converted into apartments in 1992, it features a wealth of details making it a distinctive presence in the area.

## ACCOMMODATION

Comprising of reception hallway, spacious lounge with laminate flooring, a large fitted kitchen/dining area, master bedroom, second double bedroom, and principal bathroom. The specification of the property includes gas central heating, sash and case windows and secure door entry system.

The setting at Calside is well positioned for all amenities nearby including Morrisons, numerous local shops, and the Royal Alexandra Hospital. It is a short journey to the town centre and railway travel, with direct access to Glasgow City Centre available from Canal Street (short walk away) or Gilmour Street stations.

Early viewing of this superb property is strongly advised by the selling agents in order to avoid disappointment.

## MEASUREMENTS

Lounge	16'69 x 11'96
Bedroom One	9'43 x 10'02
Bedroom Two	10'78 x 9'69
Kitchen	11'30 x 12'94
Bathroom	4'69 x 7'51

## COUNCIL TAX

D

## EPC Band

C

## FACTORED BUILDING

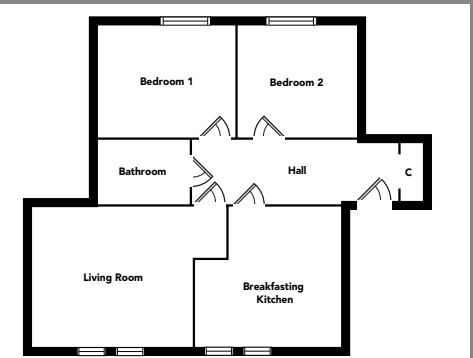
Yes

## DATE OF ENTRY

Negotiable

## VIEWING

Wright & Crawford 0141-887-6211



Floorplans are indicative only - not to scale  
Produced by [Plushplans](#)

### DISCLAIMER

Whilst we endeavour to make these particulars as accurate as possible, they do not form part of any contract of offer, nor are guaranteed. Measurements are approximate and in most cases are taken with a digital/sonic-measuring device and are taken to the widest point. We have not tested the electricity, gas or water services or any appliances. Photographs are reproduced for general information and it must not be inferred that any item is included for sale with the property. If there is any part of this that you find misleading or simply wish clarification on any point, please contact our office immediately when we will endeavour to assist you in any way possible.