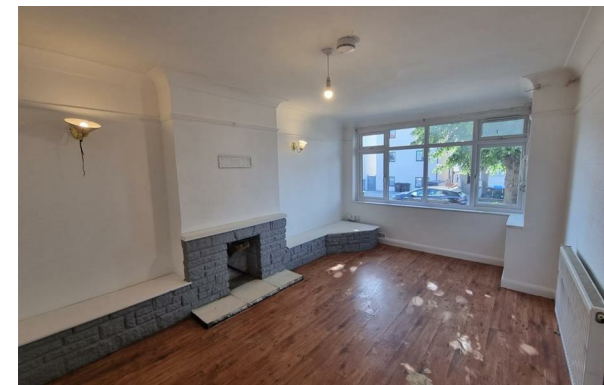




James Chiltern
Estate Agents



305 Selsdon Road, South Croydon, CR2 6PS

£2,400 Per Month

- SPACIOUS 3 BEDROOM HOUSE
- LARGE FULLY TILED BATHROOM
- AVAILABLE IMMEDIATELY
- 2 RECEPTIONS
- REAR DRIVEWAY FOR 2 CARS
- MODERN FITTED KITCHEN
- CLOSE TO TRANSPORT LINKS AND TOWN CENTRE

182 London Road, Croydon, Surrey, CR0 2TE
0208 681 8133

lettings@jameschiltern.com
www.jameschiltern.com

Directions

Viewings

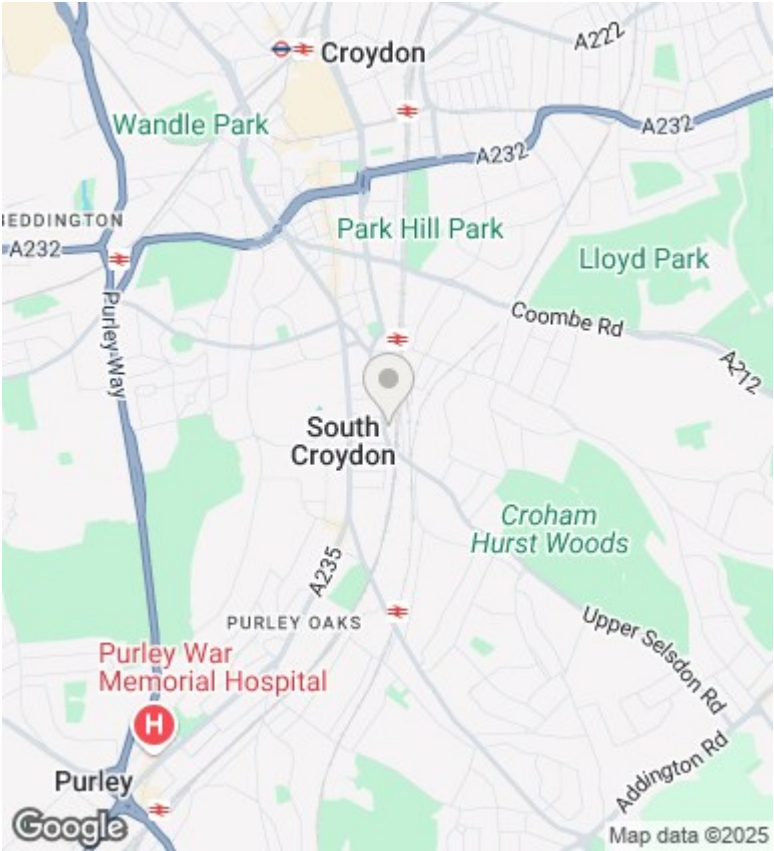
Viewings by arrangement only. Call 0208 681 8133 to make an appointment.

Council Tax Band

D

EPC Rating:

D



Energy Efficiency Rating		
	Current	Potential
Very energy efficient - lower running costs		
(92 plus) A		86
(81-91) B		
(69-80) C	67	
(55-68) D		
(39-54) E		
(21-38) F		
(1-20) G		
Not energy efficient - higher running costs		
England & Wales		EU Directive 2002/91/EC