



James Chiltern
Estate Agents



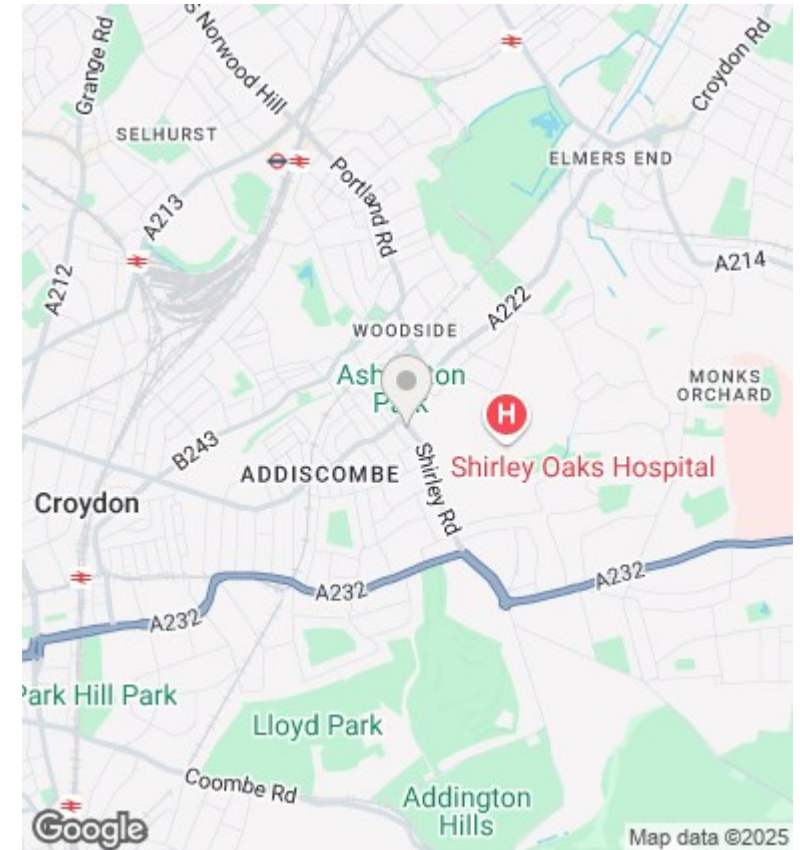
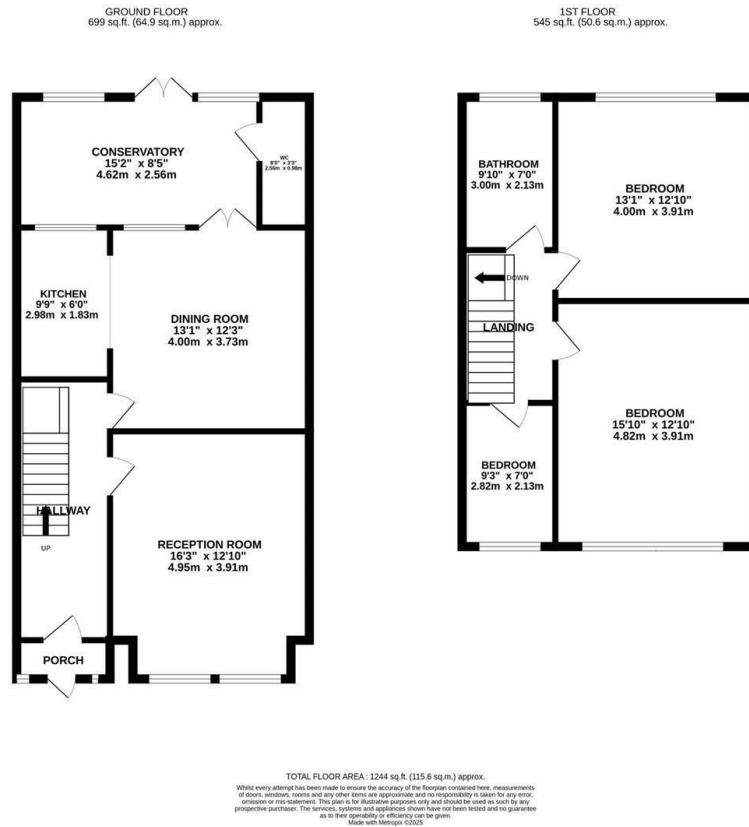
6 Shirley Road, Croydon, CR0 7EP

Offers In The Region Of £525,000

- Three-bedroom terraced home in popular Shirley Road location
- Practical kitchen with good storage
- Family bathroom upstairs
- Close to schools, parks, shops and excellent transport links into Central London
- Two spacious reception rooms with flexible layout options
- Handy downstairs WC (off the kitchen)
- Private, low-maintenance rear garden
- Bright conservatory-style space overlooking the garden
- Two generous double bedrooms + one single (ideal for nursery, office or guest room)
- On-street parking available

182 London Road, Croydon, Surrey, CR0 2TE
0208 681 8133

lettings@jameschiltern.com
www.jameschiltern.com



Directions

Viewings

Viewings by arrangement only. Call 0208 681 8133 to make an appointment.

Council Tax Band

D

EPC Rating:

D

Energy Efficiency Rating		
	Current	Potential
Very energy efficient - lower running costs		
(92 plus) A		84
(81-91) B		
(69-80) C	65	
(55-68) D		
(39-54) E		
(21-38) F		
(1-20) G		
Not energy efficient - higher running costs		
England & Wales		EU Directive 2002/91/EC