

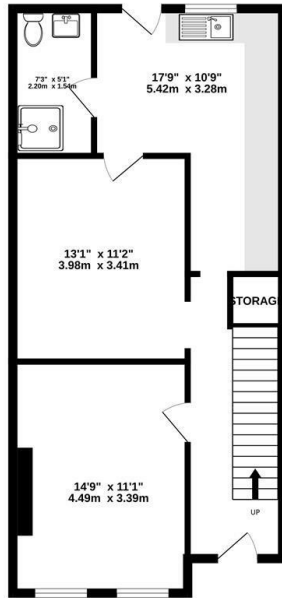


112 Silverleigh Road, Thornton Heath, CR7 6DW

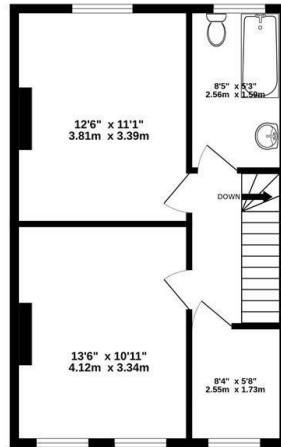
Asking Price £500,000

- Two Receptions
- Upstairs and Downstairs Bathroom
- Transport links to West Croydon, Purley & Brixton
- Three Bedrooms
- Large Rear Garden
- Quiet residential area
- Modern Kitchen
- Close to amenities

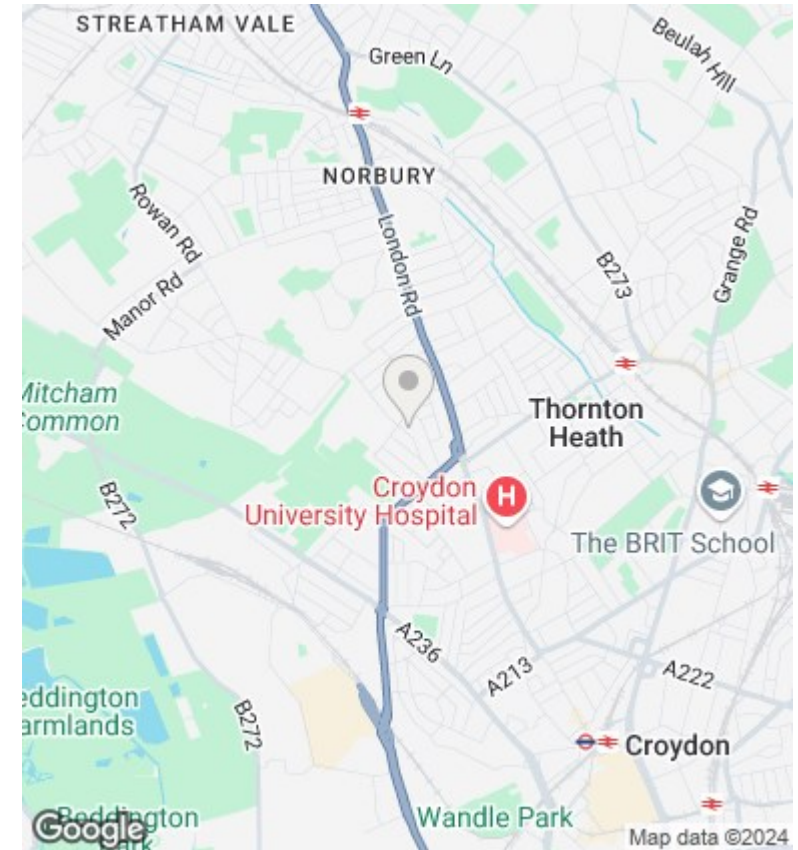
GROUND FLOOR
619 sq.ft. (57.5 sq.m.) approx.



1ST FLOOR
467 sq.ft. (43.4 sq.m.) approx.



TOTAL FLOOR AREA: 1086 sq.ft. (100.9 sq.m.) approx.
Whilst every attempt has been made to ensure the accuracy of the floorplan contained herein, measurements of floors, windows, rooms and any other items are approximate and no responsibility is taken for any error, omission or misstatement. This plan is for guidance purposes only and should be used as such by any prospective purchaser. The services, systems and appliances shown have not been tested and no guarantee as to their operability or efficiency can be given.
 Made with Metropix 10001



Directions

Viewings

Viewings by arrangement only. Call 0208 681 8133 to make an appointment.

Council Tax Band

D

EPC Rating:

Energy Efficiency Rating		
	Current	Potential
<i>Very energy efficient - lower running costs</i>		
(92 plus) A		
(81-91) B		
(69-80) C		
(55-68) D		
(39-54) E		
(21-38) F		
(1-20) G		
<i>Not energy efficient - higher running costs</i>		
England & Wales	EU Directive 2002/91/EC	