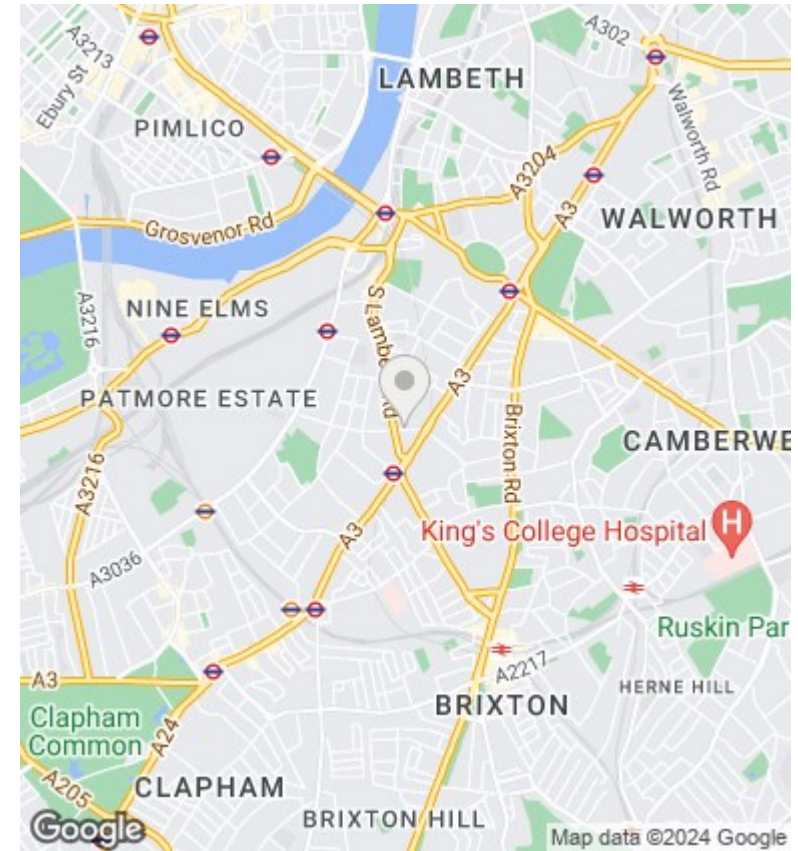
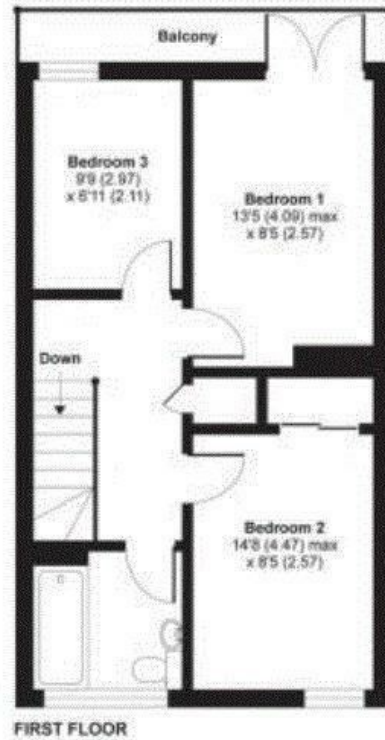
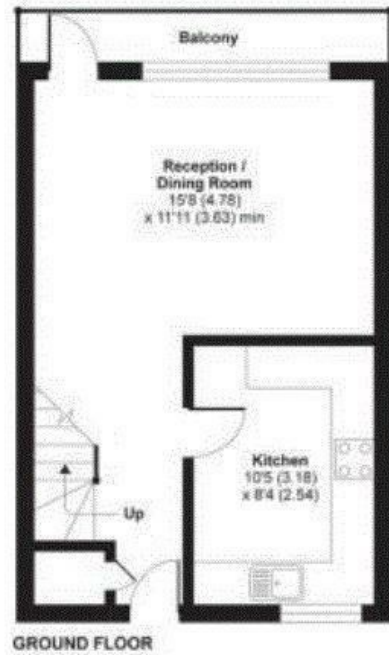




## 70 Dovet Court, Mursell Estate, Stockwell, London, SW8 1HS

Asking Price £400,000

- Ideal Investment Purchased
- Kitchen Breakfast Room
- Spacious Split - Level Flat
- Great Access To Central London
- Long Lease
- Easy Access To Stockwell Tube Station



## Directions

## Viewings

Viewings by arrangement only. Call 0208 681 8133 to make an appointment.

## Council Tax Band

## EPC Rating:

Energy Efficiency Rating		
	Current	Potential
<i>Very energy efficient - lower running costs</i>		
(92 plus) <b>A</b>		
(81-91) <b>B</b>		
(69-80) <b>C</b>		
(55-68) <b>D</b>		
(39-54) <b>E</b>		
(21-38) <b>F</b>		
(1-20) <b>G</b>		
<i>Not energy efficient - higher running costs</i>		
<b>England &amp; Wales</b>	EU Directive 2002/91/EC	