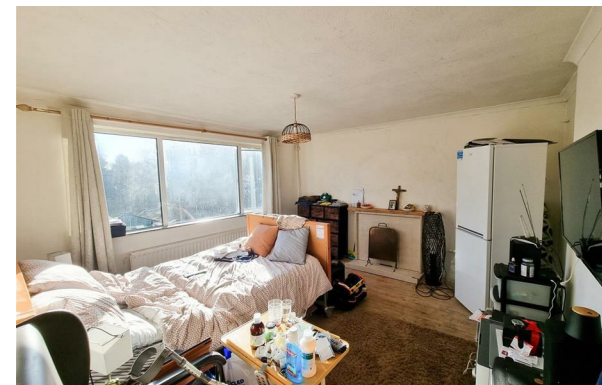




James Chiltern
Estate Agents



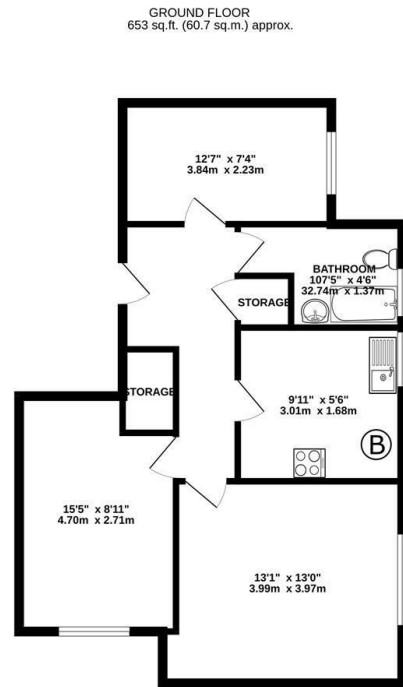
24, Fairhaven Court Warham Road, South Croydon, CR2 6LF

Offers In The Region Of £250,000

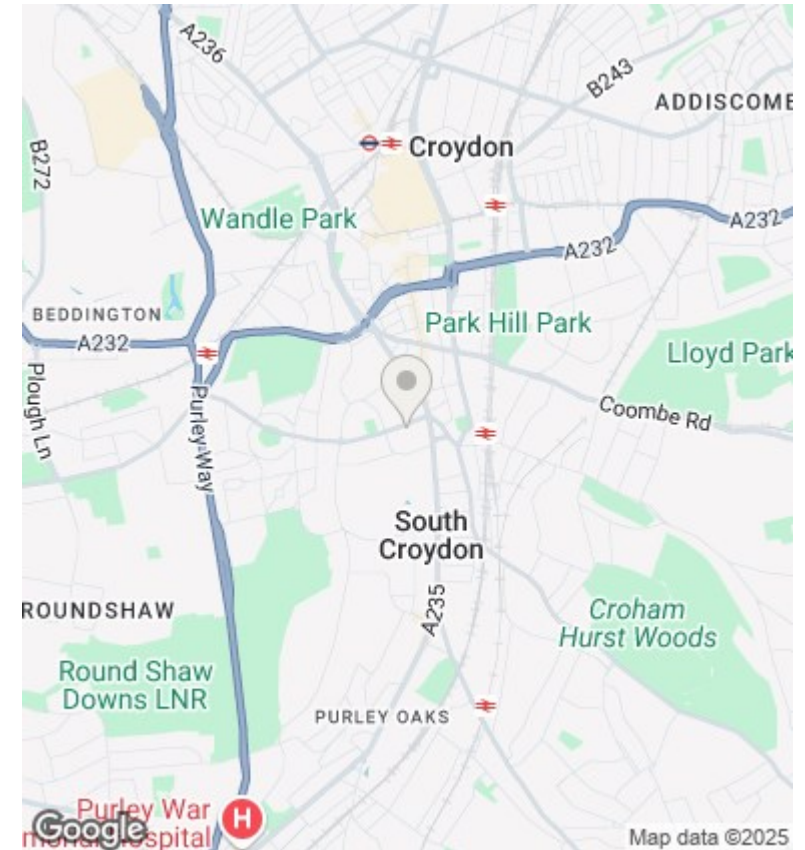
- Spacious 2 Bedroom Purpose-Built Flat
- Own Garage
- Within Walking Distance Of Croydon Town Centre
- Spacious Rooms Throughout
- Long 999 Year Lease
- Transport Links & All Amenities Close By
- Fully Double Glazed & Gas Central Heating
- Large Communal Gardens
- Property Requires Cosmetic Modernisation Throughout

182 London Road, Croydon, Surrey, CR0 2TE
0208 681 8133

lettings@jameschiltern.com
www.jameschiltern.com



TOTAL FLOOR AREA: 653 sq.ft. (60.7 sq.m.) approx.
While every attempt has been made to ensure the accuracy of the foregoing contained here, measurements of doors, windows, rooms and any other items are approximate and no responsibility is taken for any error, omission or misstatement. This plan is for illustrative purposes only and should be used as such by any prospective purchaser. The services, systems and appliances shown have not been tested and no guarantee as to their operability or efficiency can be given.
Made with MetreX 12/2014



Directions

Viewings

Viewings by arrangement only. Call 0208 681 8133 to make an appointment.

Council Tax Band

C

EPC Rating:

Energy Efficiency Rating		
	Current	Potential
Very energy efficient - lower running costs		
(92 plus) A		
(81-91) B		
(69-80) C		
(55-68) D		
(39-54) E		
(21-38) F		
(1-20) G		
Not energy efficient - higher running costs		
England & Wales	EU Directive 2002/91/EC	