

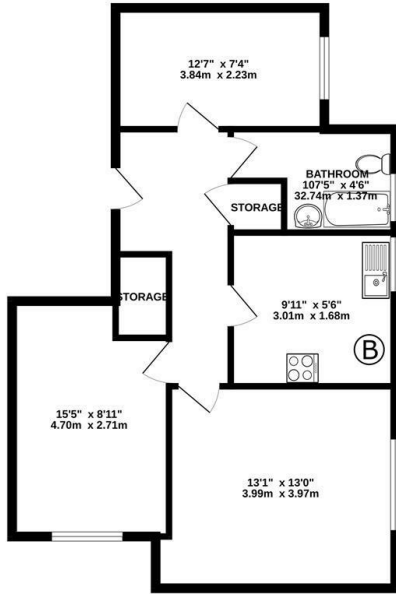


Fairhaven Court, 24 Warham Road, South Croydon, CR2 6LF

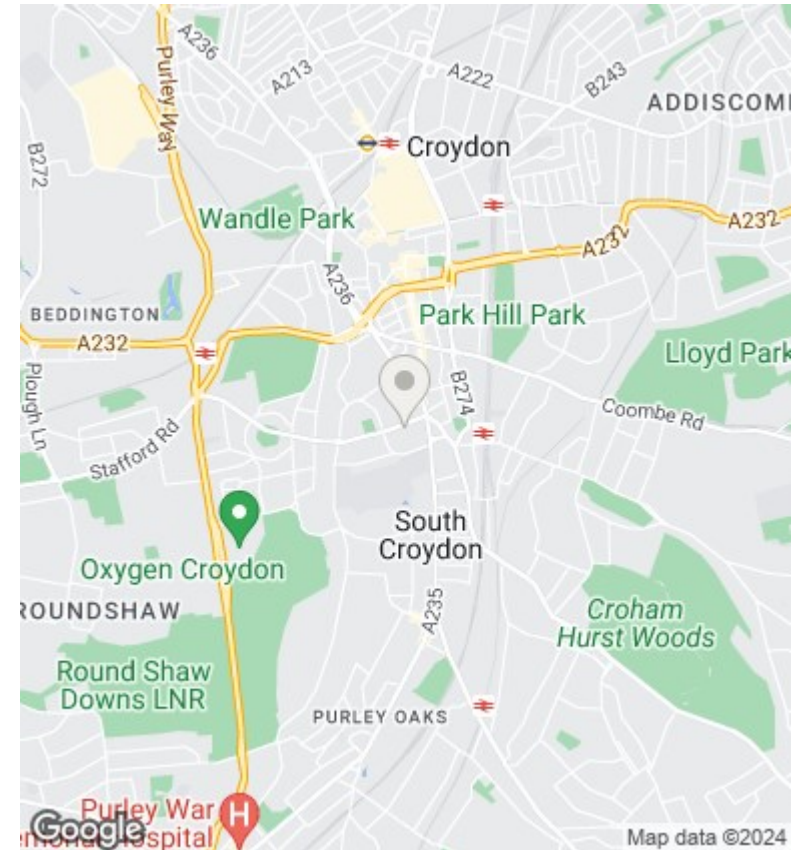
Asking Price £290,000

- Chain Free
- Close To Local Amenities
- Some Modernising Required
- Resident Parking
- Close to South Croydon Station
- Garage
- Road Links & Transport Links

GROUND FLOOR
653 sq.ft. (60.7 sq.m.) approx.



TOTAL FLOOR AREA: 653 sq.ft. (60.7 sq.m.) approx.
Whilst every attempt has been made to ensure the accuracy of the figures contained here, measurements of doors, windows, rooms and any other items are approximate and no responsibility is taken for any error, omission or misstatement. This plan is for guidance purposes only and should be used as such by any prospective purchaser. The services, systems and appliances shown have not been tested and no guarantee is given as to their operability or efficiency capabilities.
Made with iMetrix 12/2024



Directions

Viewings

Viewings by arrangement only. Call 0208 681 8133 to make an appointment.

Council Tax Band

C

EPC Rating:

Energy Efficiency Rating		
	Current	Potential
<i>Very energy efficient - lower running costs</i>		
(92 plus) A		
(81-91) B		
(69-80) C		
(55-68) D		
(39-54) E		
(21-38) F		
(1-20) G		
<i>Not energy efficient - higher running costs</i>		
England & Wales	EU Directive 2002/91/EC	