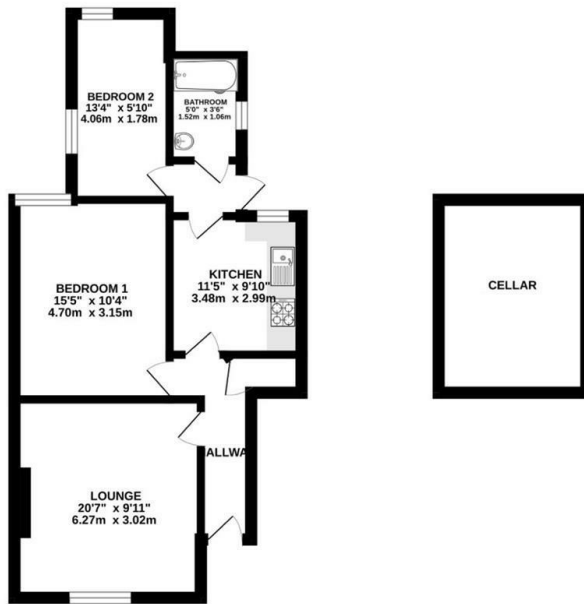




Ground Floor Flat, 70 Nova Road, Croydon, CR0 2TL

Offers In The Region Of £275,000

- SPACIOUS GROUND FLOOR FLAT -- VICTORIAN CONVERSION
- SEPARATE KITCHEN
- REQUIRES MODERNISATION
- OWN PRIVATE GARDEN
- BASEMENT AREA
- VACANT AND CHAIN FREE
- SPACIOUS RECEPTION ROOM
- LONG LEASE -- 980 YEARS WITH SHARE OF FREEHOLD



While every effort has been made to ensure the accuracy of the description contained herein, measurements of doors, windows, rooms and any other items are approximate and no responsibility is taken for any error, omission or misstatement. This plan is for illustrative purposes only and should be used as such by any prospective purchaser. The services, systems and appliances shown have not been tested and no guarantee as to their operability or efficiency can be given. Made with MemoPro ©2024



Directions

Viewings

Viewings by arrangement only. Call 0208 681 8133 to make an appointment.

Council Tax Band

C

EPC Rating:

D

Energy Efficiency Rating		Current	Potential
<i>Very energy efficient - lower running costs</i>			
(92 plus) A			
(81-91) B			76
(69-80) C		66	
(55-68) D			
(39-54) E			
(21-38) F			
(1-20) G			
<i>Not energy efficient - higher running costs</i>			
England & Wales		EU Directive 2002/91/EC	