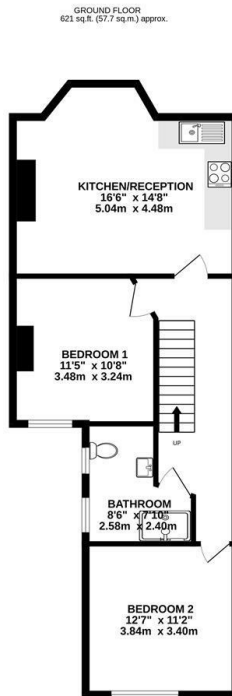




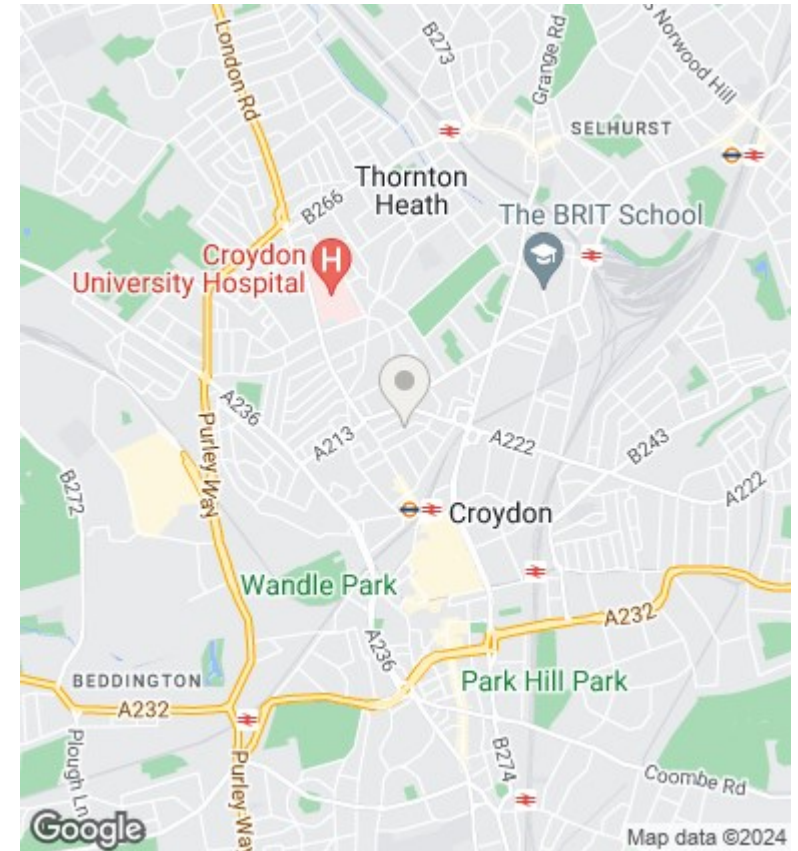
## First Floor, 27 Nova Road, Croydon, CR0 2TN

Offers In Excess Of £250,000

- SPACIOUS 2 BEDROOM FLAT
- LARGE BEDROOMS
- LOCAL TO TRANSPORT LINKS AND TOWN CENTRE
- FIRST FLOOR VICTORIAN CONVERSION
- FULL OF CHARACTER
- MODERN FITTED KITCHEN AND BATHROOM
- NEW LONG LEASE



TOTAL FLOOR AREA: 621 sq.ft. (57.7 sq.m.) approx.  
Whilst every attempt has been made to ensure the accuracy of the figures contained here, measurements of doors, windows, rooms and any other items are approximate and no responsibility is taken for any error, omission or misstatement. This plan is for illustrative purposes only and should be used as such by any prospective purchaser. The services, systems and appliances shown have not been tested and no guarantee as to their operability or efficiency can be given.  
 Made with iMagine 12/2014



## Directions

## Viewings

Viewings by arrangement only. Call 0208 681 8133 to make an appointment.

## Council Tax Band

C

## EPC Rating:

Energy Efficiency Rating		
	Current	Potential
<i>Very energy efficient - lower running costs</i>		
(92 plus) <b>A</b>		
(81-91) <b>B</b>		
(69-80) <b>C</b>		
(55-68) <b>D</b>		
(39-54) <b>E</b>		
(21-38) <b>F</b>		
(1-20) <b>G</b>		
<i>Not energy efficient - higher running costs</i>		
<b>England &amp; Wales</b>	EU Directive 2002/91/EC	