

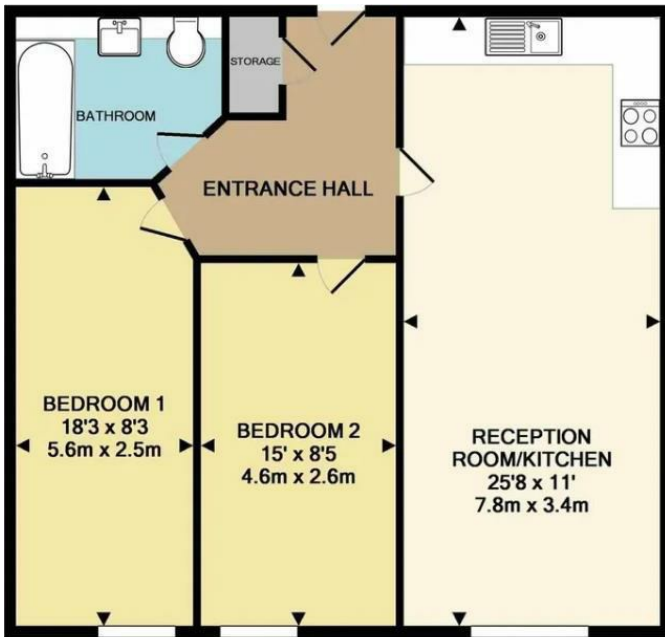


Flat 14, 386 London Road, Croydon, CR0 2SU

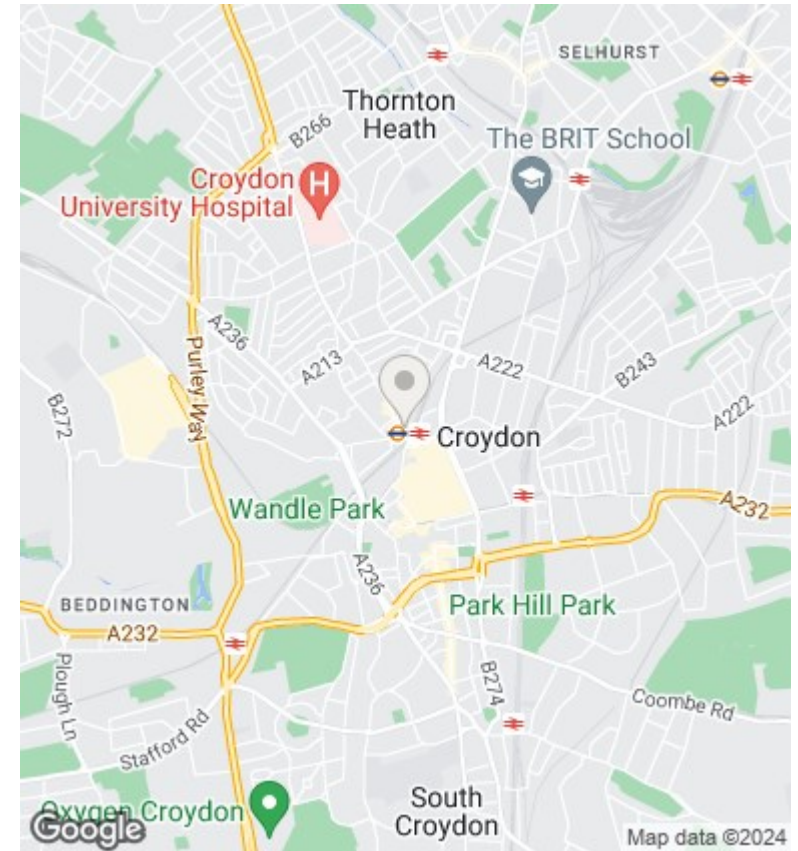
Asking Price £250,000

- 2 BEDROOM APARTMENT
- PRIVATE BALCONY
- CHAIN FREE AND VACANT
- MODERN FINISH THROUGHOUT
- FULLY INTEGRATED KITCHEN
- IDEAL AS AN INVESTMENT OR FIRST HOME

- SPACIOUS ROOMS
- LONG LEASE



TOTAL APPROX. FLOOR AREA 700 SQ.FT. (65.0 SQ.M.)



Directions

Viewings

Viewings by arrangement only. Call 0208 681 8133 to make an appointment.

Council Tax Band

D

EPC Rating:

B

Energy Efficiency Rating		Current	Potential
<i>Very energy efficient - lower running costs</i>			
(92 plus) A			
(81-91) B		83	84
(69-80) C			
(55-68) D			
(39-54) E			
(21-38) F			
(1-20) G			
<i>Not energy efficient - higher running costs</i>			
England & Wales		EU Directive 2002/91/EC	