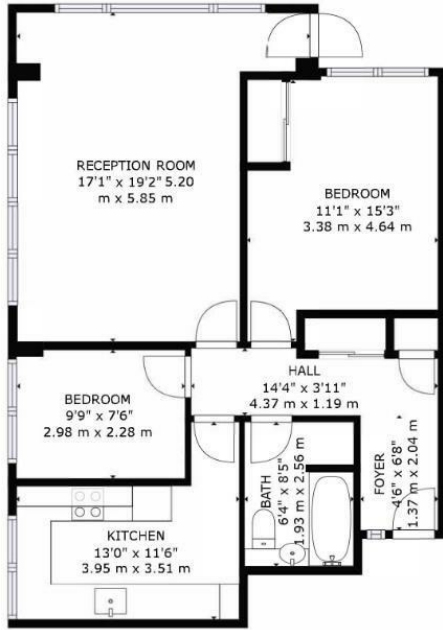




56 Zodiac Court, 165 London Road, Croydon, CR0 2RJ

Offers In Excess Of £260,000

- MODERN 2 BEDROOM APARTMENT
- 2 DOUBLE BEDROOMS
- LONG 130 YEAR LEASE
- LUXURY FITTED KITCHEN
- PRIVATE BALCONY
- IMMEDIATE VIEWINGS AVAILABLE
- SPACIOUS RECEPTION ROOM
- CLOSE TO TRANSPORT LINKS



FLOOR 1

GROSS INTERNAL AREA
FLOOR 1: 792 sq. ft, 74 m²
TOTAL: 792 sq. ft, 74 m²
SIZES AND DIMENSIONS ARE APPROXIMATE, ACTUAL MAY VARY.



Directions

Viewings

Viewings by arrangement only. Call 0208 681 8133 to make an appointment.

Council Tax Band

C

EPC Rating:

C

Energy Efficiency Rating		Current	Potential
<i>Very energy efficient - lower running costs</i>			
(92 plus) A			
(81-91) B			
(69-80) C		70	75
(55-68) D			
(39-54) E			
(21-38) F			
(1-20) G			
<i>Not energy efficient - higher running costs</i>			
England & Wales		EU Directive 2002/91/EC	